

Snowy River Project Update – May 2025

Federation Mining is pleased to provide an update on our progress at the Snowy River Gold Mine which employs over 80 people near Reefton on the South Island in New Zealand.

Project Update

Our team continues work on our Feasibility Study (FS) which is currently being peer reviewed as we finalise the chapters for sign off.

During the month, our team had a safe month while advancing 60 metres of decline development and 100 metres of ore drive development along with 493 metres of diamond drilling.

An upgrade of the mine pumping system is underway while dewatering of the historic mine continues.

The construction of the base for the processing plant rock foundation progressed to 70% and the placement of the raft sections where larger fixed plant will be built were completed.

Our exploration team completed surface field work in the hills on our exploration tenement.

Two of our team members were internally promoted last month in leadership roles as Mine Superintendents. Vinnie and Glen will work on back-to-back rosters to coordinate underground operations and develop our team.



Photo – Underground road maintenance operations

Recruitment

All our vacant roles are advertised on LinkedIn, Facebook or numerous regional papers. Current vacancies Diesel Fitter & Electrician, experienced miners and Senior Mining Engineer.

To apply for positions vacant or register your interest for future work, send your application form, cover letter and up-to-date resume to recruitment@federationmining.com.au

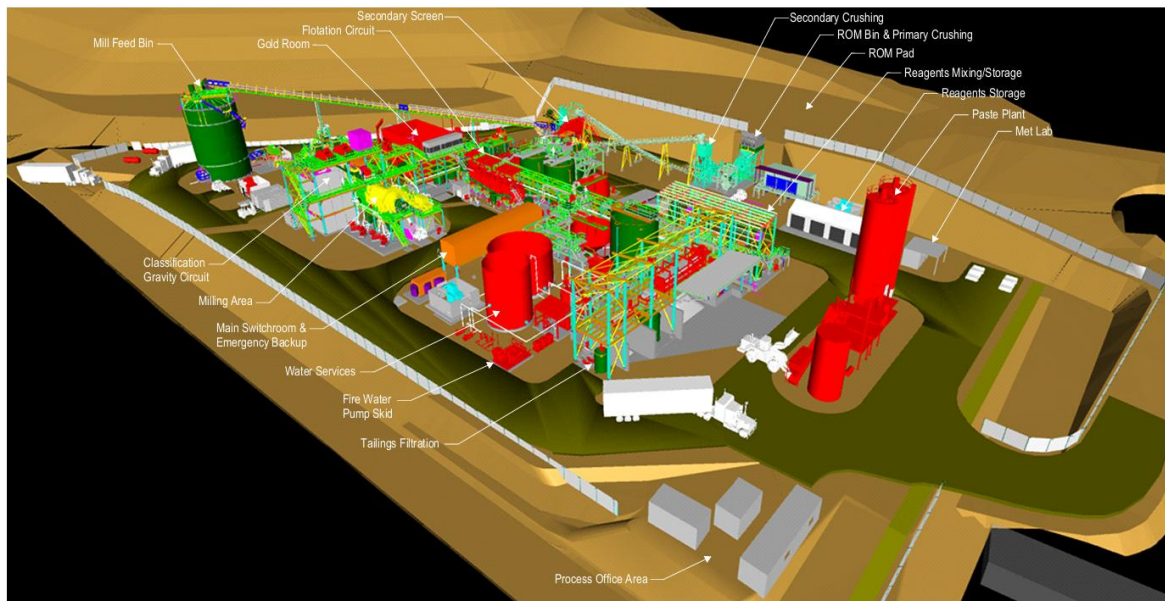
Environment & Consent

During May rainfall was 61mm and all environmental consent monitoring was completed.

Stakeholders & Community

During the month we injected approximately NZ\$4 million dollars into the NZ regional economy through our suppliers, contracts and employee wages, approximately NZ\$1.5 million of that spend was on the West Coast.

The earth works for the Reefton accommodation project started and the cabin construction commenced in Westport, this project will create work for over 50 local West Coasters over the coming months.



Above – Current process plant concept design / Below – Our team doing exploration work



Contact Federation Mining

Website www.federationmining.com.au
Email info@federationmining.com.au
LinkedIn www.linkedin.com/company/federationmining
Facebook [Federation Mining – Snowy River Mine](#)

Community Information Line

Phone 03 732 7028 (NZ)

For more information, please contact:

New Zealand Contact

Simon Delander
+61 2 8330 6785

Australian Contact

Michael Vaughan, Fivemark Partners
+61 422 602 720

About Federation Mining

Federation is an Australian incorporated company established by Mark Le Messurier and Jim Askew to build a gold mining company with the support of our foundation investor AustralianSuper. Federation will pursue opportunities where it is able to apply its expertise and experience in the development and management of mining projects across a range of regions with a strong focus on Sustainability.

The Snowy River Mine has a Mining Permit (60473) in place from New Zealand Petroleum and Minerals.

The site operates under Resource Consents issued by the Buller District and West Coast Regional Council and has a stakeholder liaison group which includes affected parties under our Regional Consent these are Regional & District Council, Dept of Conservation, Te Rūnanga o Ngāti Waewae and our landowner.