



**FEDERATION  
MINING**

**Community Meeting**

**February 2025**



# Snowy River Mine Updates



- Employment for over 80 people onsite, approx. 70% reside on the Coast.
- Over 10,000 m of decline has been completed including ore drives.
- The Birthday Reef was intercepted in Feb 2024, ore drives being developed
- A second stand alone reef was intercepted in late 2024 - the Christmas Reef.
- Our drilling program continues with 4 rigs underground. Close to 25,000 metres of drilling has been completed to date.
- Dewatering is ongoing and pressure reducing.
- Processing plant pad construction commenced. Plant Design at 40%
- Our new Processing Manager will commence in March.
- Federation continues to work on funding packages through various local investors and support from Australian Super.

**Project in  
Final Phase**

**Fully  
permitted  
January 2023**

**Tier 1  
jurisdiction**

**Resource  
785koz  
at 24g/t**

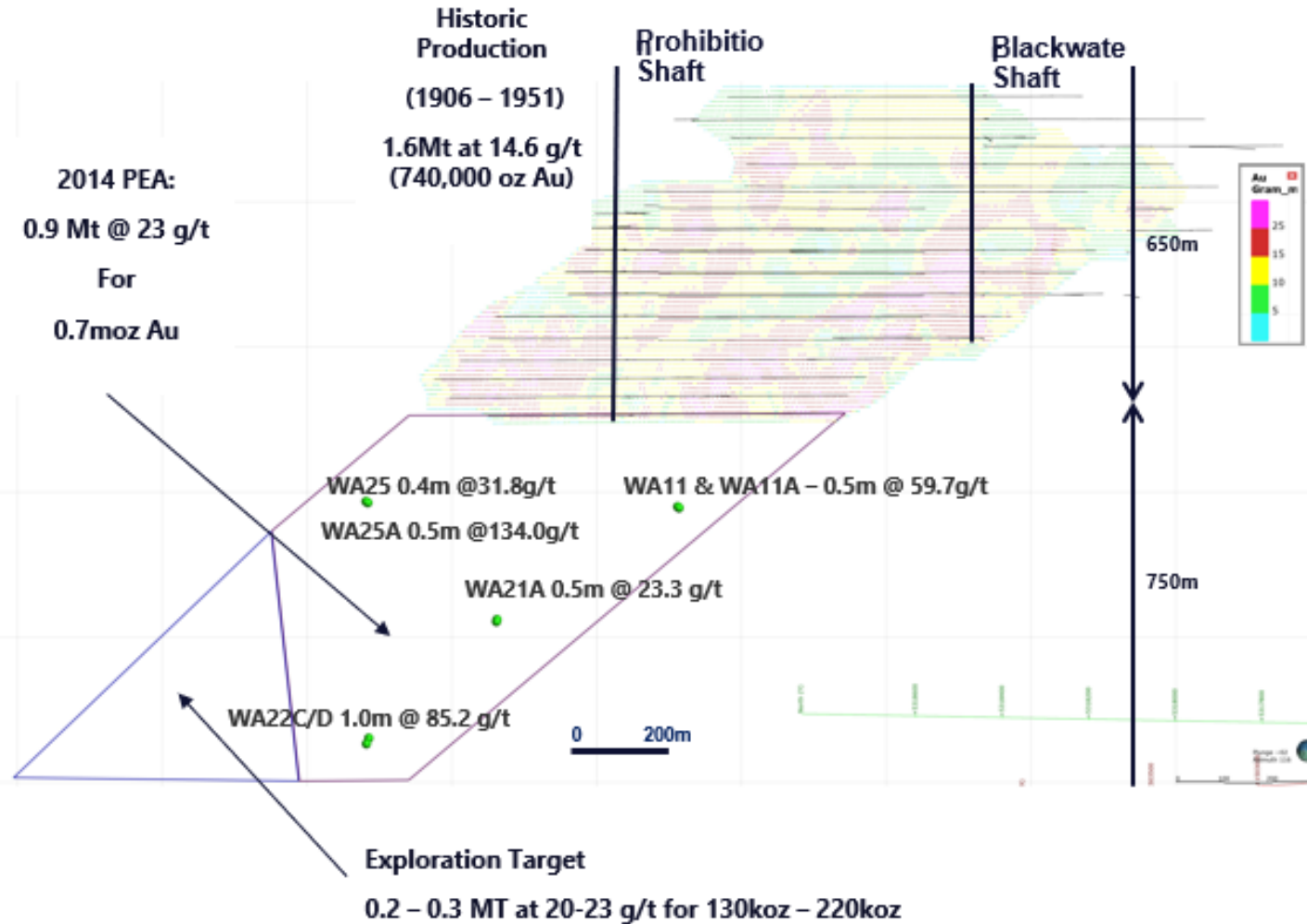
**PFS  
April '24  
DFS  
April '25**

**Already 4 years  
into mine  
development**

# Surface Overview



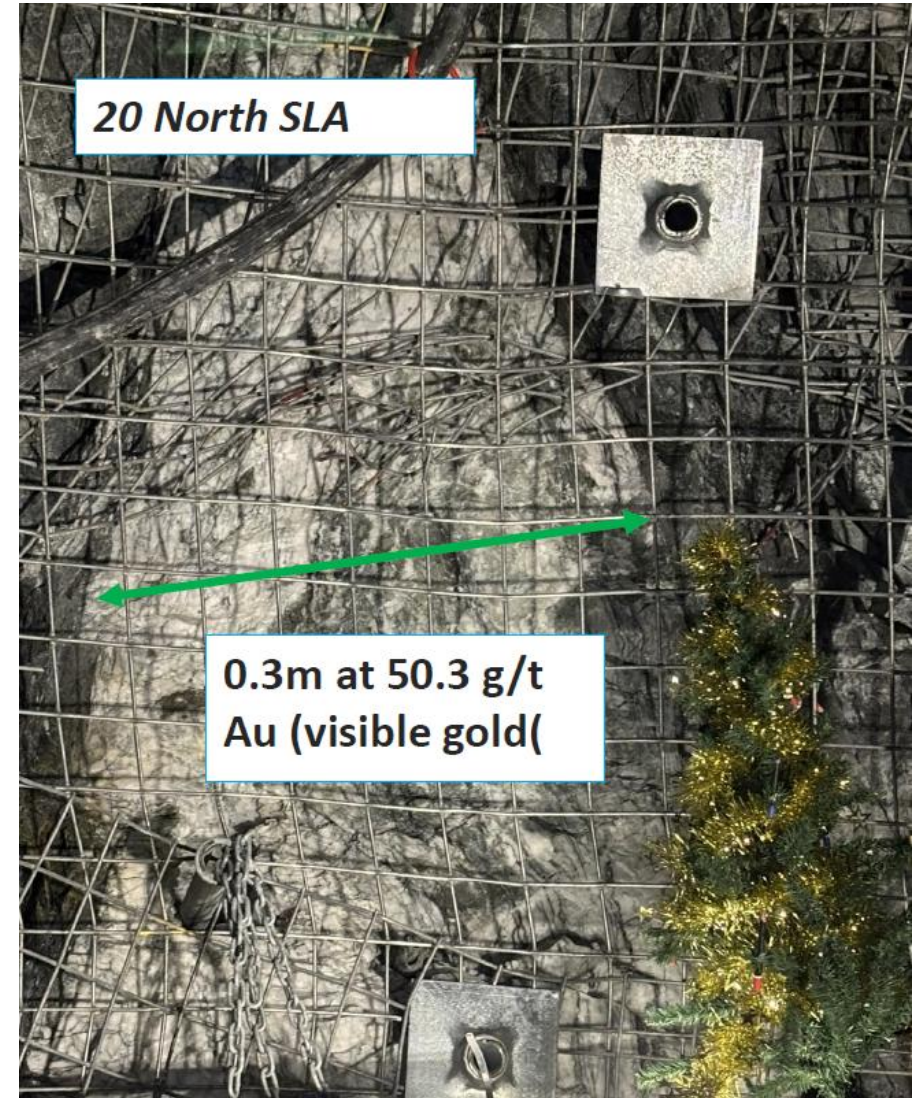
# Drilling Program



- 6 holes drilled – confirmed grade and width continuity 750 metres below old workings
- 1,150 oz/vertical metre *in situ*
- These results are the basis of Federation’s strategy for Snowy River Mine development

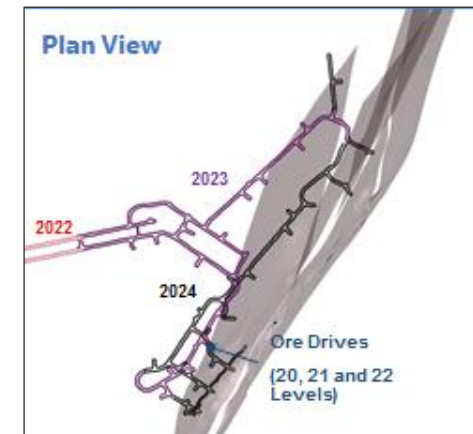
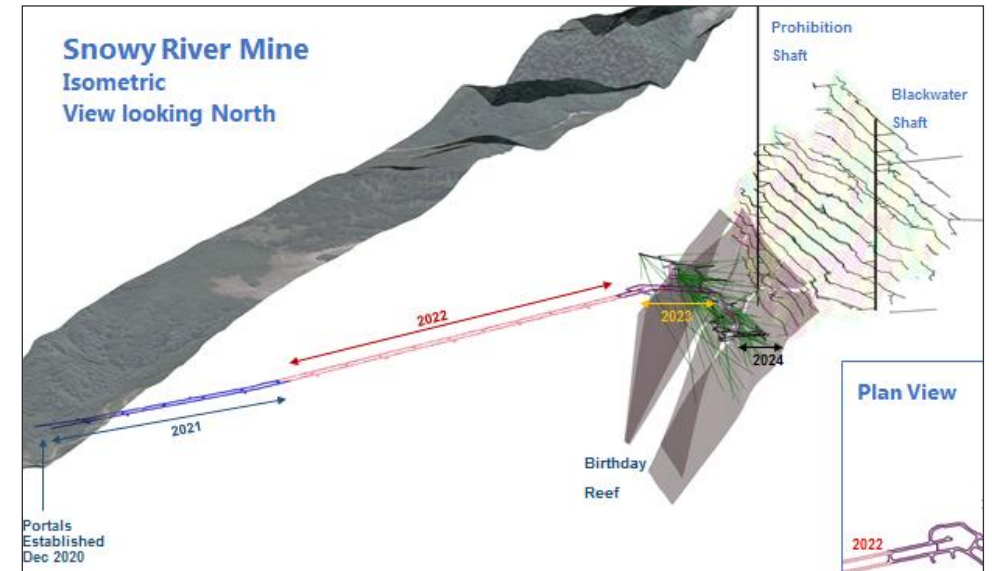
# Christmas Reef

- In late 2023, the team intersected a reef with visible gold about 50m to the west of the Birthday Reef.
- At first, the reef was thought to be a fault repetition of the Birthday Reef but drilling throughout 2024 has demonstrated that it is another reef position in its own right.
- Following more drilling, the reef can be traced up to 200m along strike and 300m down plunge.



# Next Steps

- Continue UG drilling and stope development
- Definitive Feasibility Study (DFS) by April 2025
- IPO anticipated after July 2025 (ASX)
- Complete plant design/engineering
- Commence construction after Q2 '25
- Production anticipated after Q2 '26
- 65koz per year at A\$1625/oz (US\$1000) AISC (First 5yrs)



# Process Plant

## FACTS:

Expected output: 300,000 t/pa

Size: 1.7 hectares

Completion Date: Mid 2026

Employees to run the plant: 25



# Environment & Consents

- Water management key priority
- Environmental monitoring has continued within regulatory and internal commitments.
- Environmental bond in place
- Works plan submitted to Government
- Emissions data tracked and reported
- Ongoing pest control and weed management.
- The Snowy River consent liaison group continues to meet twice a year.
  - Buller Council
  - West Coast Regional
  - Te Rūnanga o Ngāti Waewae
  - DoC
  - External environmental advisor





# Community

The West Coast community continues to support Federation's activities and Federation has provided support to various local groups over the past year including:

- Friends of Waiuta
- Life Education West Coast
- Reefton Boxing Club
- Greymouth Christmas Event
- Quartzopoulos Marathon
- Ikamatua Civil Defence
- Minerals West Coast
- Reefton Bowling Club
- Reefton Darts Club
- Majors Task Force for Jobs
- Christmas Events in Reefton and Greymouth
- Reefton Trots & Races



# Accommodation Project

- Federation have been working in conjunction with Buller District Council and Reefton Inc. on a legacy project for Federation of some additional cabins to be built at Reefton Motor Park.
- Some of these cabins will be used by Federation employees or contractors during the expected 10 year mine life, while others will be available for public use.
- Federation provided a letter of intent to the Motor Park Board and BDC to support the project



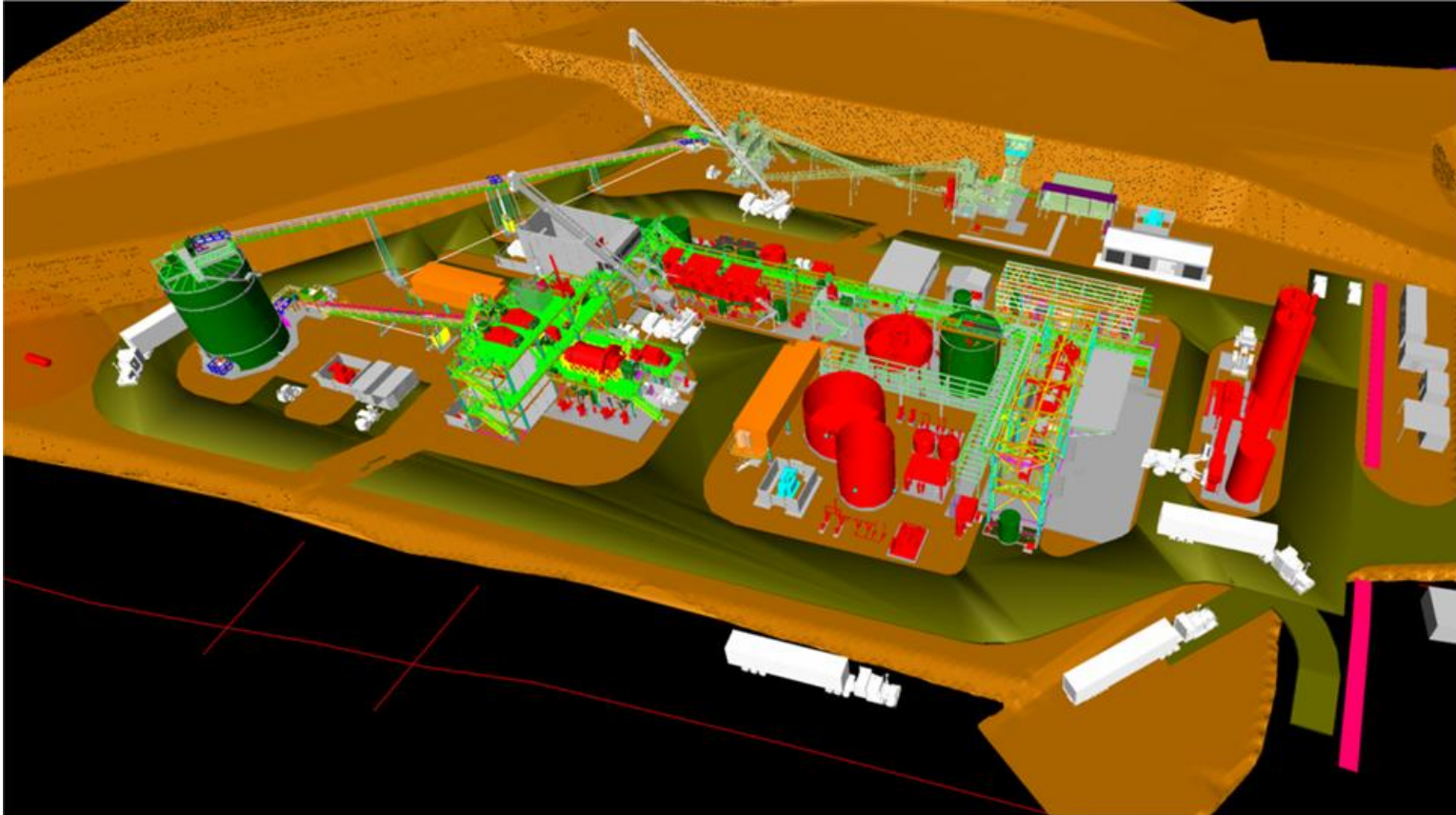
# State Highway 7 Upgrade

- The upgrade to the State Highway 7 & Snowy River Road is nearing commencement of works. This important upgrade will enhance the safety of the corner for all users.
- The upgrade project is being managed by NZTA with sub-contractors completing aspects of the construction works.
- There will be traffic control in place for the duration of the works period.
- Planned commencement is in April 2025, subject to final approvals and will continue for a period of up to 3 months, pending weather and other factors.



# Construction Labour

These will be a great injection into the regional economy with many of the contractors identified to date based on the West Coast.



Labour modelling for the plant construction up to 160 people:

- Engineering and construction supervision
- Civil earth works
- Crusher relocation and build
- Logistics and freight management
- Concrete and form work
- Structural steel & offsite preparation
- Construction labour
- Electrical and cabling

# Employment

- Recruitment has continued for specialised support roles, trades, safety and management.
- Current workforce is 80 people with future growth as the processing plant construction gets underway.
- Contractors will be used for the plant construction with Federation employees will operate the plant once constructed.
- Recruitment will focus on Coast & expand to broader NZ.
- Job advertising via LinkedIn, Facebook, online or local paper.



# Stay In Touch



## Our Website

[www.federationmining.com.au](http://www.federationmining.com.au)

## Mailing List

[info@federationmining.com.au](mailto:info@federationmining.com.au)

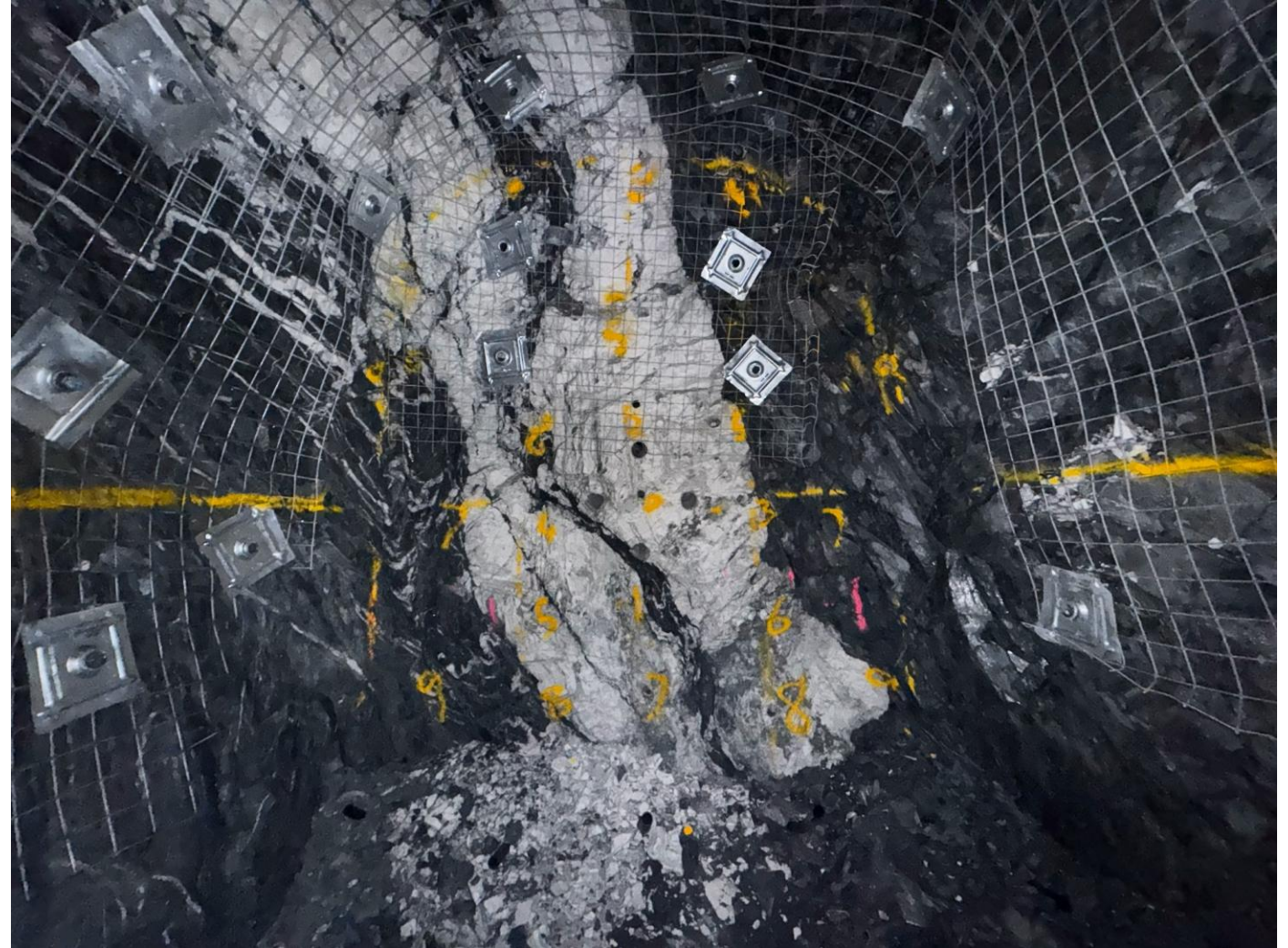
## Community Contact Line

03 732 7028

## Follow Federation Mining on LinkedIn

## Simon Delander

[sdelander@federationmining.com.au](mailto:sdelander@federationmining.com.au)



# Plant Design Animations

Mark Brown  
Site Sustainability Manager