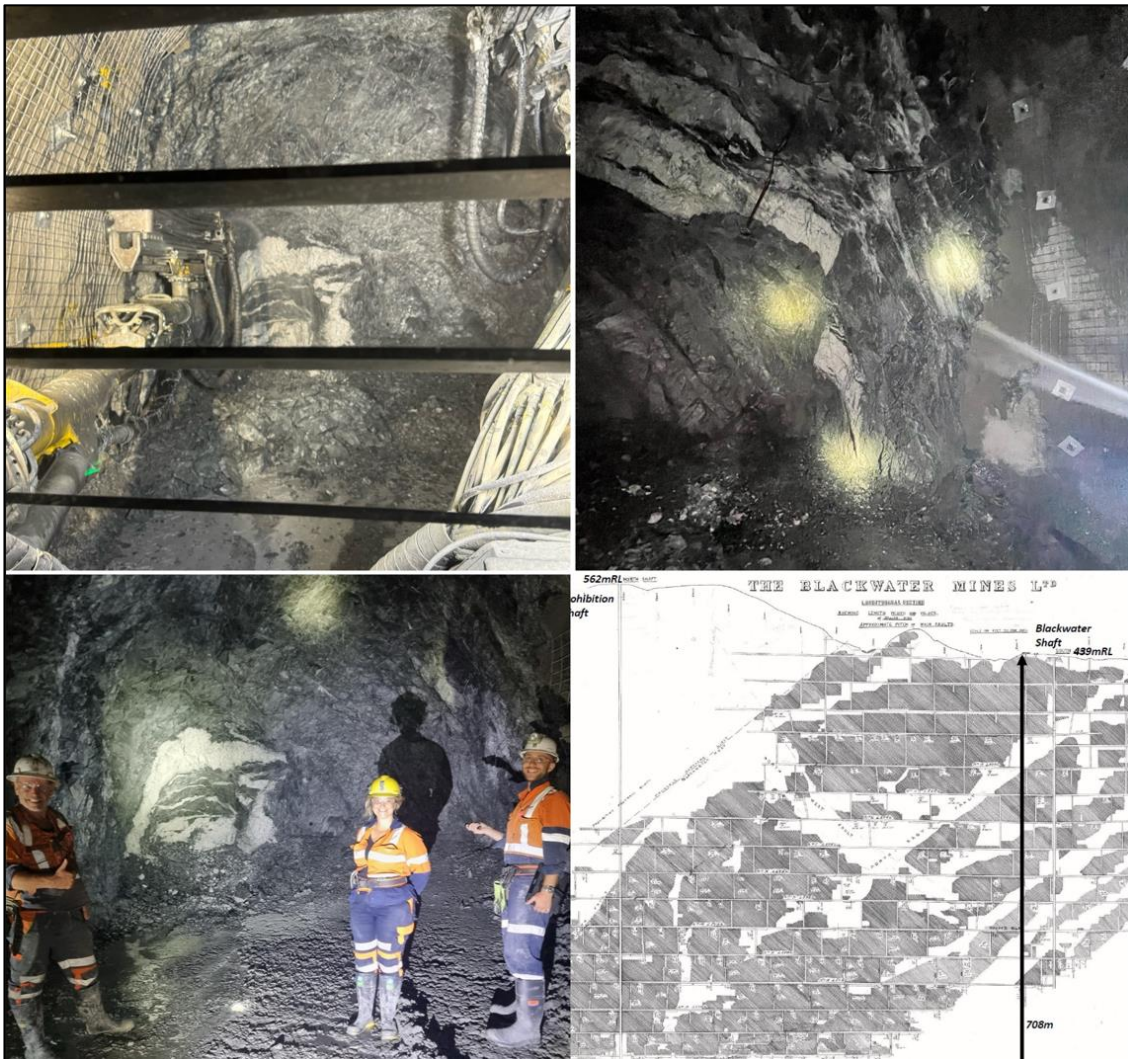


## Birthday Reef Intercept – February 2024

Federation Mining is pleased to provide an update on our progress at the Snowy River Gold Mine near Reefton on the South Island in New Zealand.

Over the weekend our team developed onto the Birthday Reef. This is an exciting milestone for the Snowy River project with the interception of the reef at a depth of 880 metres below surface and was accessed via our southern decline.

The access to the reef will provide samples for additional metallurgical test work and important insights for our technical teams to confirm our geotechnical and extraction strategies as we progress closer to moving the project into a production phase.



### Photos

- Birthday reef view from the jumbo (top left)
- Birthday Reef in the drive (top right)
- Members of Snowy River team with Birthday Reef (bottom left)
- Blackwater mine plan (bottom right)

## Contact Federation Mining

Website [www.federationmining.com.au](http://www.federationmining.com.au)  
Email [info@federationmining.com.au](mailto:info@federationmining.com.au)  
LinkedIn [www.linkedin.com/company/federationmining](http://www.linkedin.com/company/federationmining)

## Community Information Line

Phone 03 732 7028 (NZ)

## For more information, please contact:

### Federation Mining

Simon Delander  
+61 2 8330 6785

### Media Contact

Michael Vaughan, Fivemark Partners  
+61 422 602 720

## About Federation Mining

Federation is an Australian incorporated company established by Mark Le Messurier and Jim Askew to build a new gold mining company. Federation will pursue opportunities where it is able to apply its expertise and experience in the development and management of mining projects across a range of regions with a strong focus on Sustainability.

The Snowy River Mine has a Mining Permit (60473) in place from New Zealand Petroleum and Minerals.

The site operates under Resource Consents issued by the Buller District and West Coast Regional Council and has a stakeholder liaison group which includes affected parties under our Regional Consent these are Regional & District Council, Dept of Conservation, Te Rūnanga o Ngāti Waewae, OceanaGold and our landowner.

To find out more about our approach to Sustainability you can view our latest [Sustainability Report](#).