

Federation Mining

Stakeholder Liaison Committee Meeting

July 2023

Attendees

The Stakeholder Liaison Committee was established during recent Resource Consent amendments to allow for regular and formal interaction between affected parties for the duration of the consent. The following organisations will be represented and invited to participate:

- Federation Mining
- OceanaGold
- West Coast Regional Council
- Buller District Council
- Te Rūnanga o Ngāti Waewae
- Department of Conservation
- Mine Waste Management (Advisory function)



Birthday reef intersect - 2023

Agenda

- Introductions
- Presentation
 - Site update
 - Consent matters
 - Monitoring results
- Site Inspection
- Confirm follow up actions, Q&A



Snowy River Mine Timeline



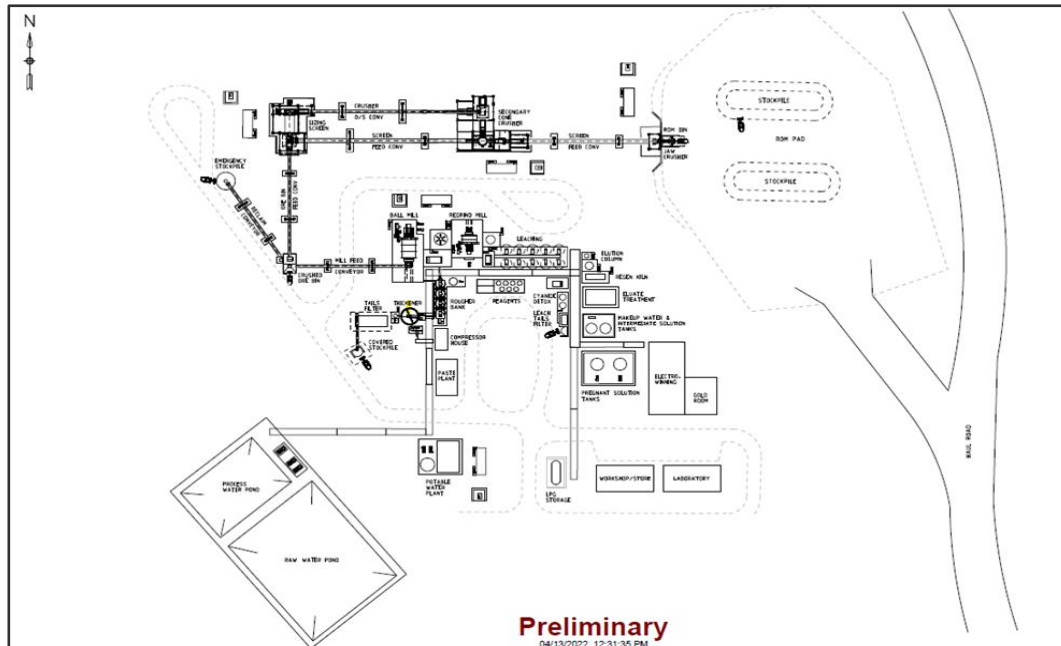
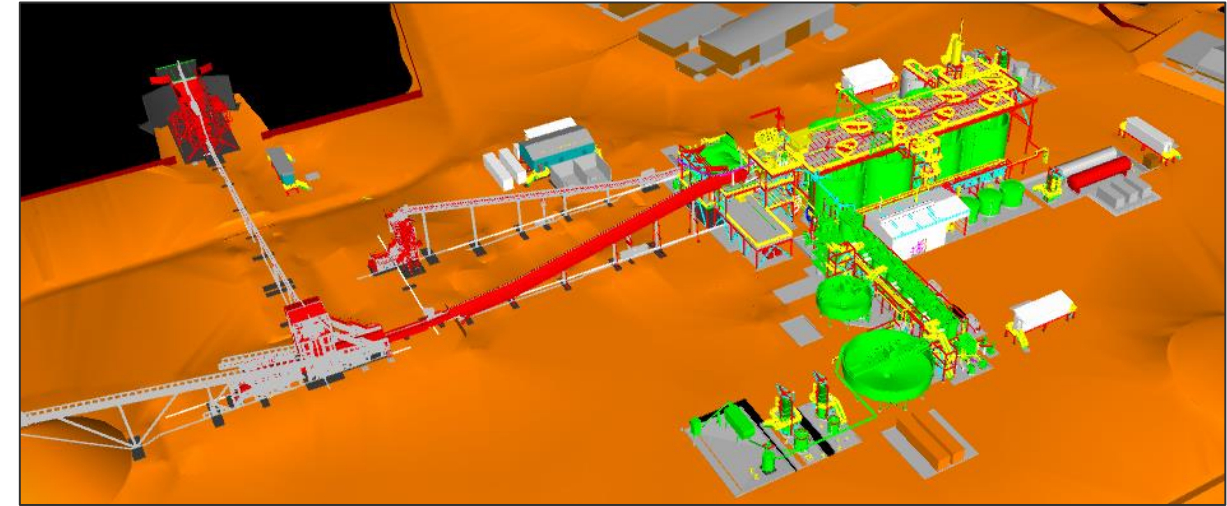
- We employ over 50 people onsite, 80% reside on the West Coast.
- To date, over 7500m of decline development have been completed across the twin declines.
- Resource Consent amendments granted in January 2023.
- Extensive drill program underway – 3000 metres complete
- Dewatering program has commenced
- Technical studies and review post drilling.
- Decision to mine late 2023.
- Construction in early 2024.
- Commence processing in late 2024.



Snowy River Mine Process Plant



- Modern gold processing plant including crush, grind and floatation circuits
- Throughput 300,000 tonnes per year with 95% recovery
- Modular plant will occupy 10,000 m2 of disturbed land
- Plant construction time estimated at 9 months



- Plant commissioning in late 2024
- 50% Waste to be placed on surface waste rock stack and 50% underground in form of paste fill
- All water runoff from surface waste rock stack to be captured and treated
- Some ore treated with cyanidation and detoxified in circuit

Environment

- We have committed to undertake performance monitoring in addition to regulatory environmental monitoring to allow us to maximise our ability to protect the environment.
- Federation has planted over 11,000 plants onsite at Snowy River this year
- Over 700 native plants offsite around the West Coast with Trees That Count.
- Tracking our emissions and reporting externally.
- Snowy River manages waste streams with a program in place to recycle cardboard and metals.
- Investigating the potential for a run of river hydro project.
- Installing a clay liner on our waste rock stack.
- Commissioning is completed of the new settling pond.
- Continuing weed spraying quarterly on site.
- Pest control – baits stations and traps around the site.
- Weather and environmental monitoring units installed.



Community



Federation values the important role community organisations play locally. In addition to local jobs and work for local businesses, we have supported a range of projects and organisations including the below:

- An AED in Ikamatua as part of the St John community AED program
- Sponsorship to Reefton Netball Club
- Sponsorship of prizes for Reefton Golf Club
- Sponsorship of The School of Mines in Reefton
- Sponsorship of Inangahua Arts Council
- Sponsorship of the IMWA conference
- Sponsorship of Buller Rugby Club and West Coast Rugby
- Friends of Waiuta partnership
- Community meetings and monthly newsletters



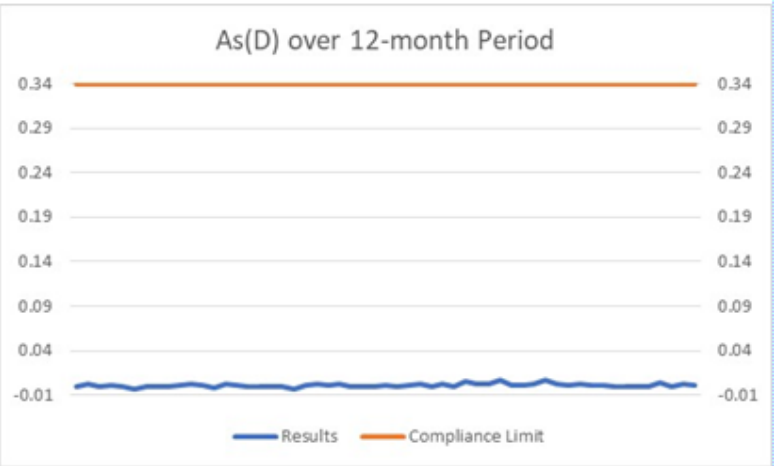
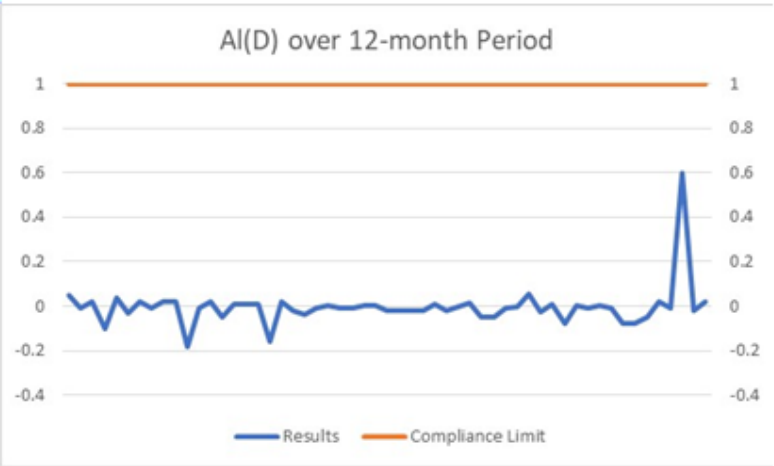
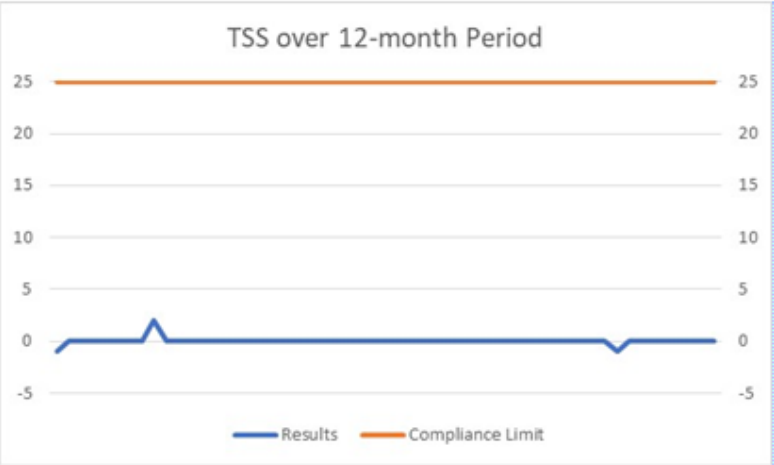
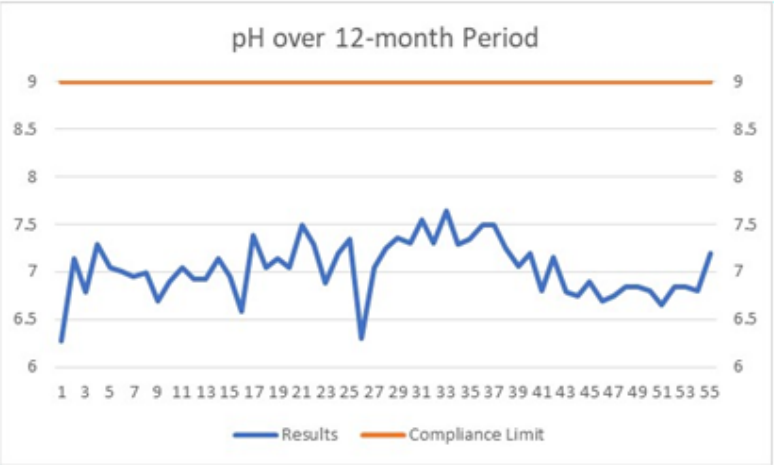
Resource Consent Matters

- Annual Works plan and management plans submitted.
- Passing bays installed.
- Water treatment ponds commissioned.
- Access to river reserve to install monitoring device.
- Waste Rock Stack footprint.
- Batch plant.
- Power line and electrical infrastructure upgrade consenting.
- State Highway intersection upgrade.
- Geochem review post drill program.
- Community feedback overview.
- Information share with DoC consultant.
- Community information line maintained.

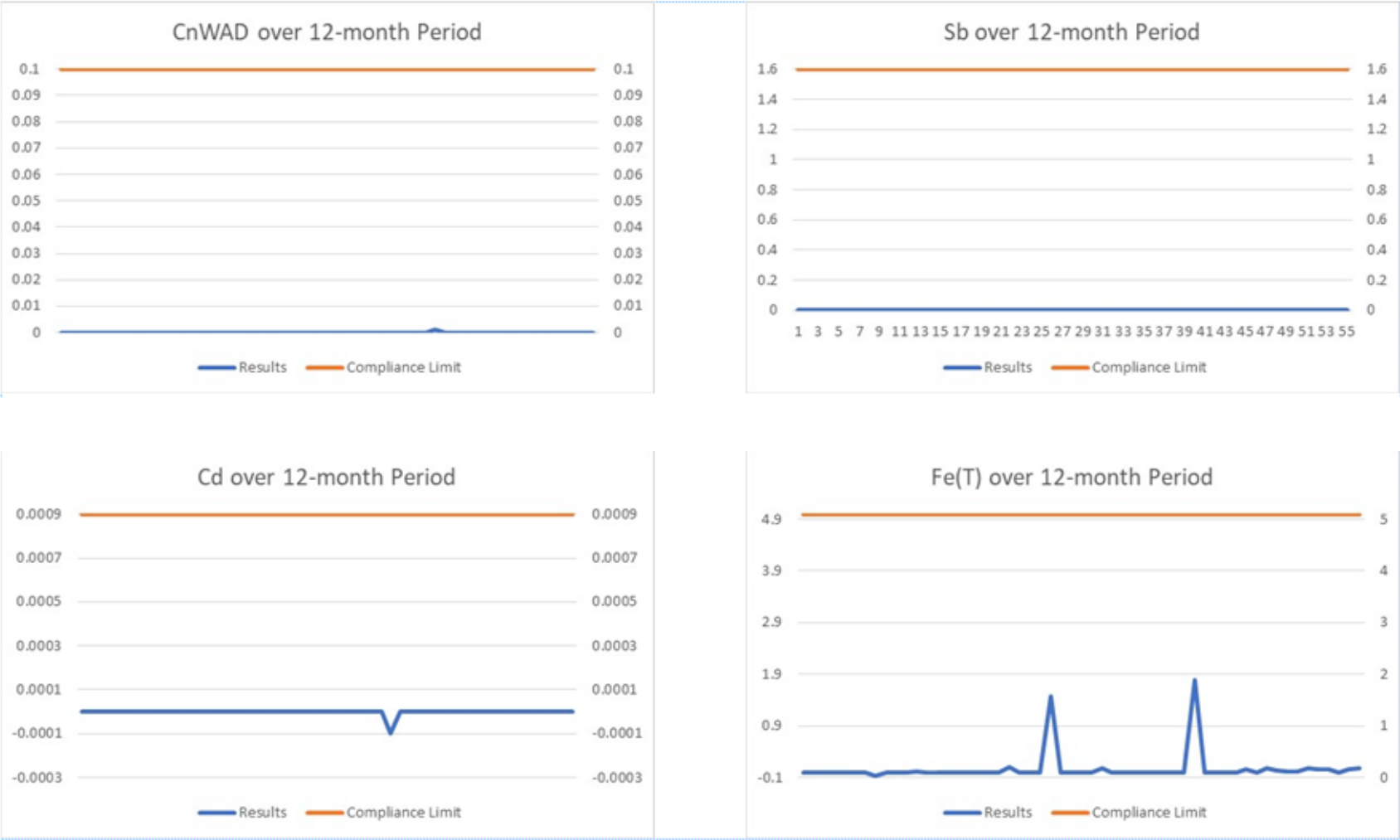


Site fly over July 2023

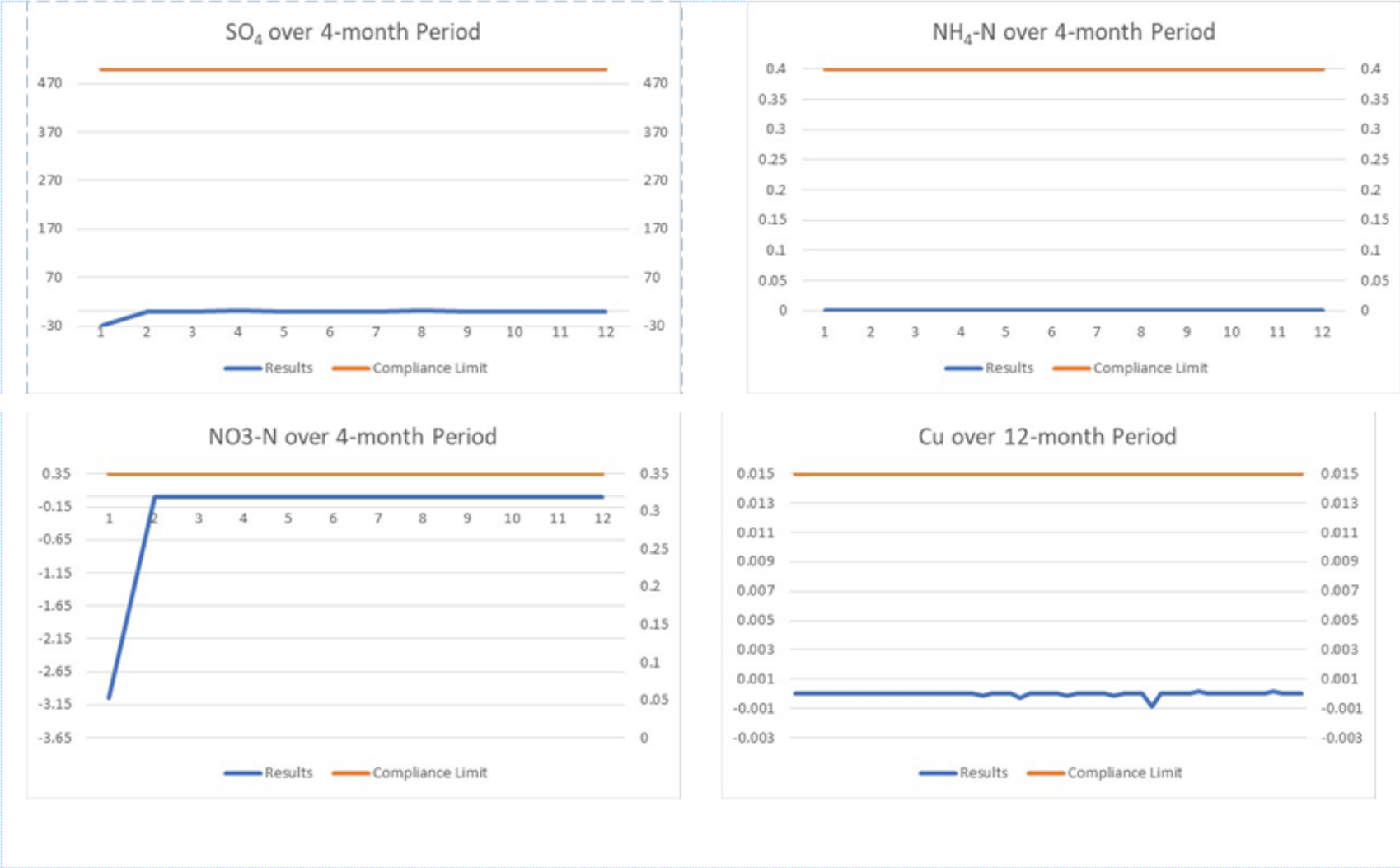
Environmental Monitoring



Environmental Monitoring



Environmental Monitoring



Stay In Touch



Our Website

www.federationmining.com.au

Mailing List

info@federationmining.com.au

Community Contact Line

03 732 7028

Follow Federation Mining on LinkedIn

