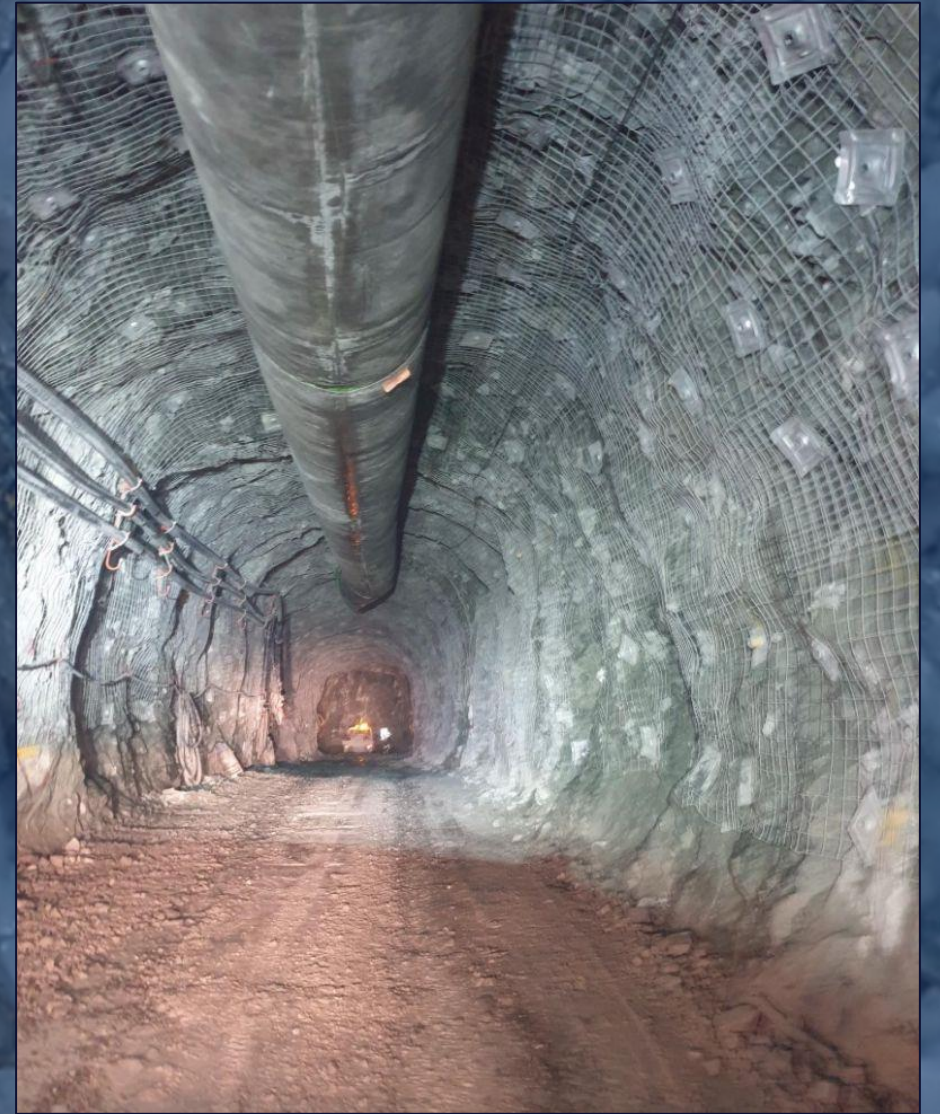


Federation Mining

Community Meeting
Reefton
March 2023



Snowy River Mine Timeline

- We have employed 49 people onsite, 80% reside on the West Coast.
- To date, over 7000m of decline development have been completed across the twin declines.
- Resource Consent granted in January 2023.
- Developed an internal technical review document (updated PEA)
- Extensive drill program commencing in March 2023.
- Dewatering program to commence in April 2023.
- Technical studies and review post drilling.
- Decision to mine late 2023.
- Commence processing in late 2024.



Narrow Vein Mining Equipment

Federation recently purchased some narrow vein mining equipment which is expected to arrive onsite mid-year.

Our team will then undertake inspections and training on the two Muki single boom drills and two small Sandvik loaders prior to using them to extract a bulk ore sample later in 2023.



[Loader Video](#)

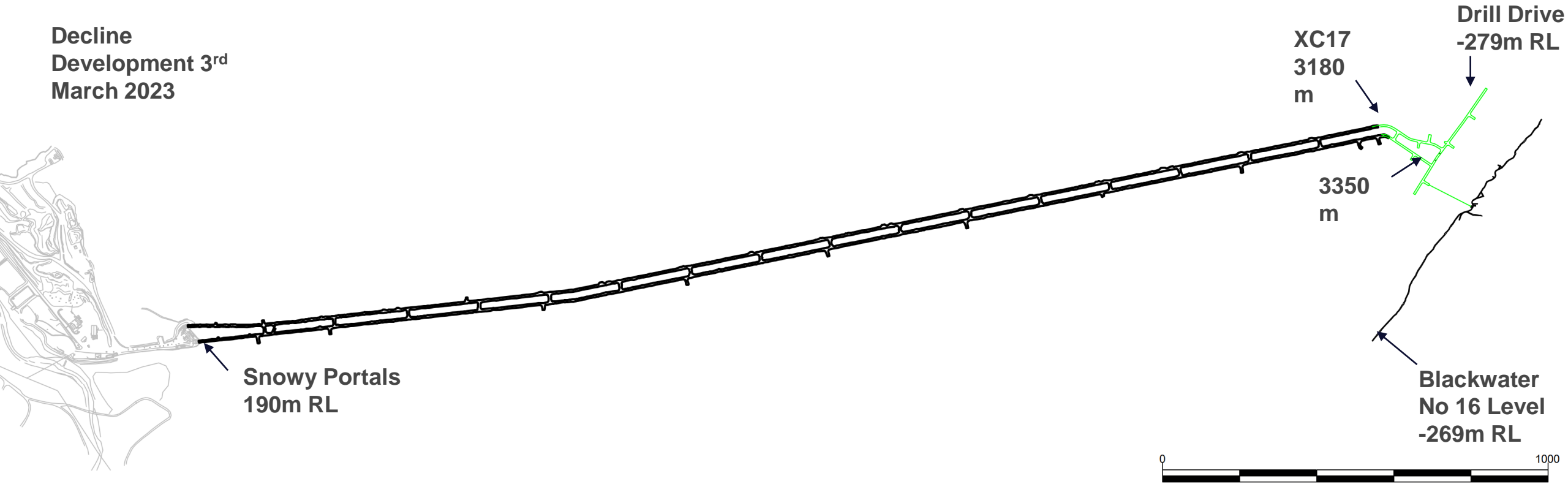
Narrow Vein Mining Equipment



Snowy River Declines



Decline
Development 3rd
March 2023



Dewatering



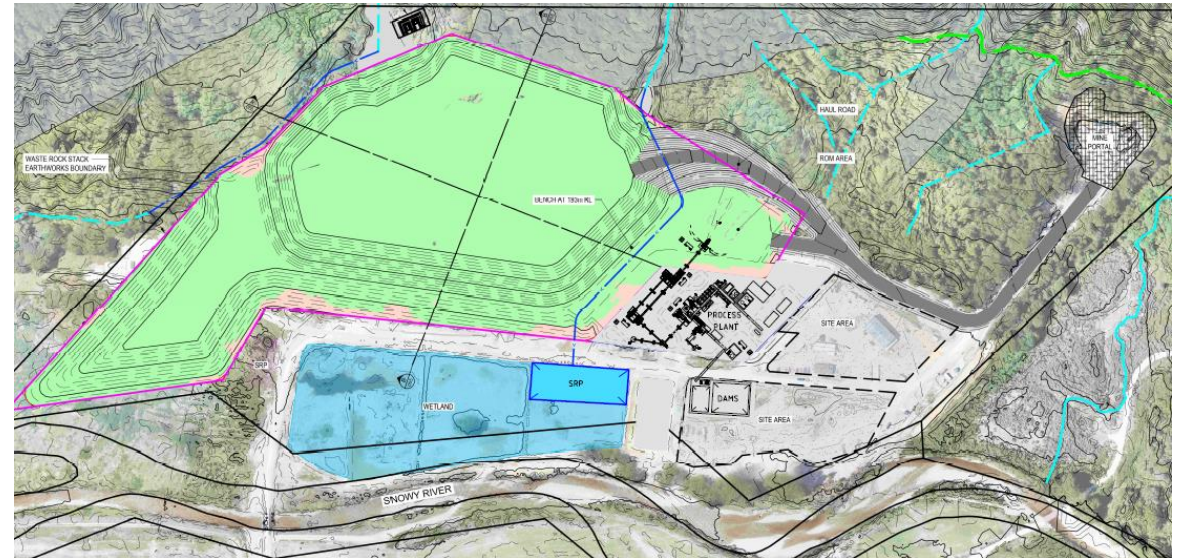
Detailed risk assessments and plans have been developed in consultation with industry specialists and advisors.



Resource Consent



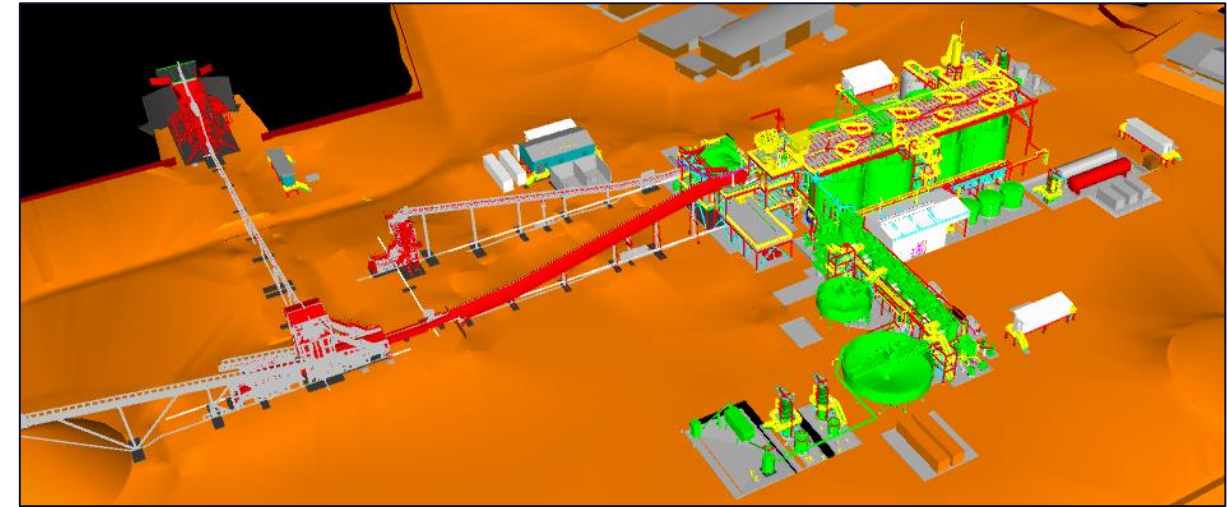
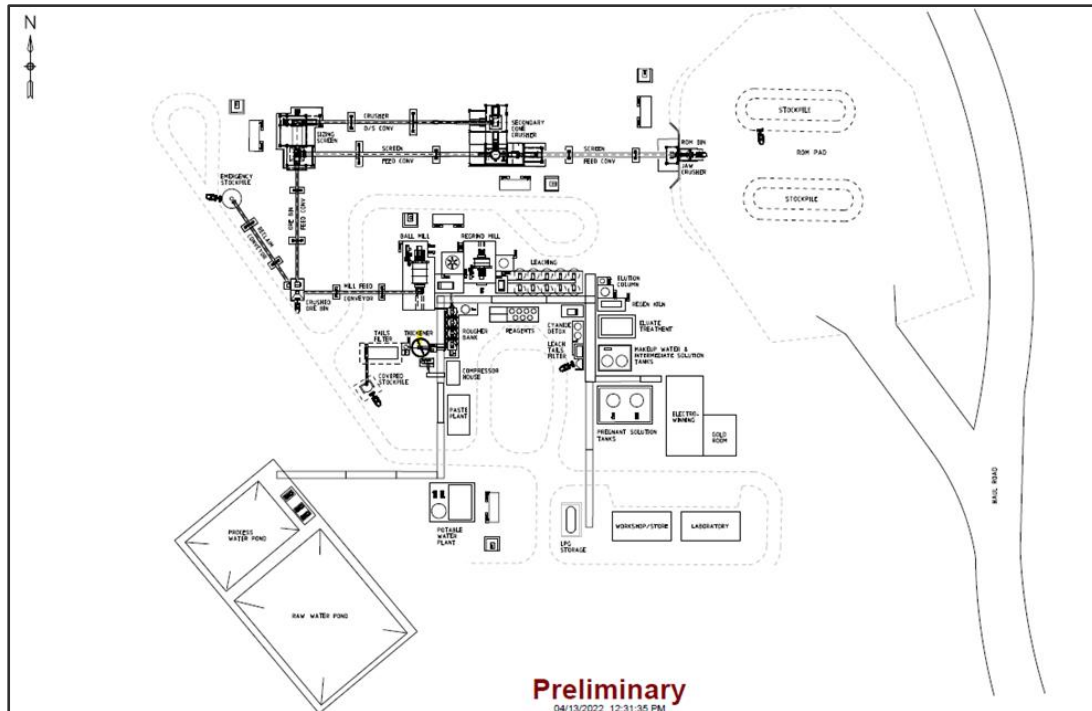
- Federation was granted a Resource Consent Application to build and operate a processing plant onsite at Snowy River.
- Federation understands the importance of being a responsible sustainable mining company in New Zealand and we have been actively engaging with the community and our stakeholders on our plans for the future of the project over the past year.
- The new consents allow for the construction of the process plant, associated infrastructure and a water treatment plant
- Federation will undertake additional monitoring and install new monitoring equipment.
- All the site management plans will be updated and a new closure plan has been developed.
- The Snowy River workforce is expected to grow from 50 to 150 personnel during production
- Federation will hold 2 stakeholder liaison group meetings each year for the life of the mine



Snowy River Mine Process Plant



- Modern gold processing plant including crush, grind and floatation circuits
- Throughput 300,000 tonnes per year with 95% recovery
- Modular plant will occupy 10,000 m2 of existing cleared land



- Plant commissioning in late 2024
- 50% Waste to be placed on surface waste rock stack and 50% underground in form of paste fill
- All water runoff from surface waste rock stack to be captured and treated
- Some ore treated with cyanidation and detoxified in circuit

Diamond Drilling

- Alton Drilling were awarded contract to drill up to 10,000 metres of diamond holes into the Birthday Reef and assist with dewatering.
- Drilling commenced in February and is expected to continue for next few months.
- Diamond core will be subject to testing and assist with decision to mine in late 2023.
- New core shed constructed onsite to assist in reviewing and managing core.
- Additional Geologists have joined the team



Site Layout

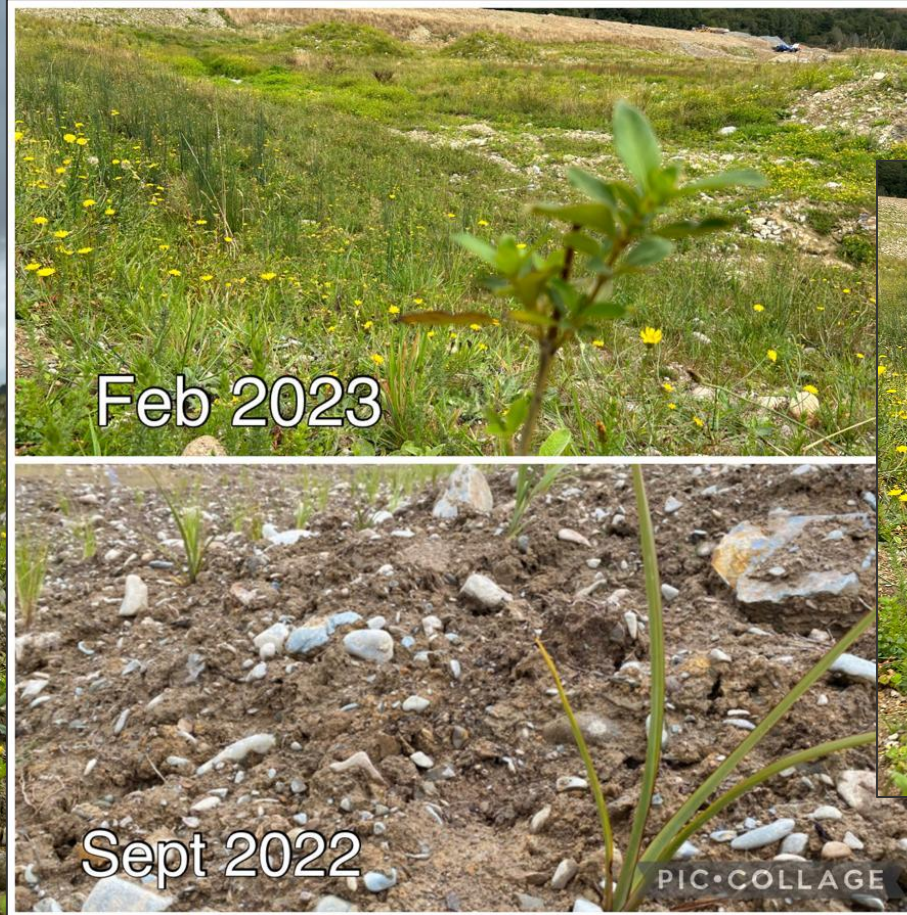


Environment

- We have committed to undertake performance monitoring in addition to regulatory environmental monitoring to allow us to maximise our ability to protect the environment.
- Federation has planted around 11,000 plants onsite at Snowy River this year
- Progressive rehabilitation commenced on waste rock stack
- 700 native plants offsite around the West Coast.
- Tracking our emissions and reporting externally.
- Snowy River manages waste streams with a program in place to recycle cardboard and metals.
- Installing a clay line on our waste rock stack
- Commissioning is completed of the new settling pond
- Continuing weed spraying quarterly on site
- Pest control – baits stations and traps around the site
- Investigating the potential for a run of river hydro project.



Water Treatment Ponds



Community

Federation values the important role community organisations play locally. Over the years, we have supported a range of projects and organisations including the below:

- An AED in Ikamatua as part of the community AED program by St John
- Contributions to Reefton Netball Club for the purchase of new uniforms
- Sponsorship of prizes for Reefton Golf Club
- Contributions to The School of Mines in Reefton for upgrades to the facilities
- Purchase of over 700 native trees through out 22/23 through the Trees That Count initiative placing these trees on the West Coast.
- Contribution to Buller Rugby Club
- Passing bays have now been installed on Snowy River Road as part of our commitments in our Resource Consent
- Contribution to Inangahua Arts Council
- Contribution to the IMWA conference



Join The Team



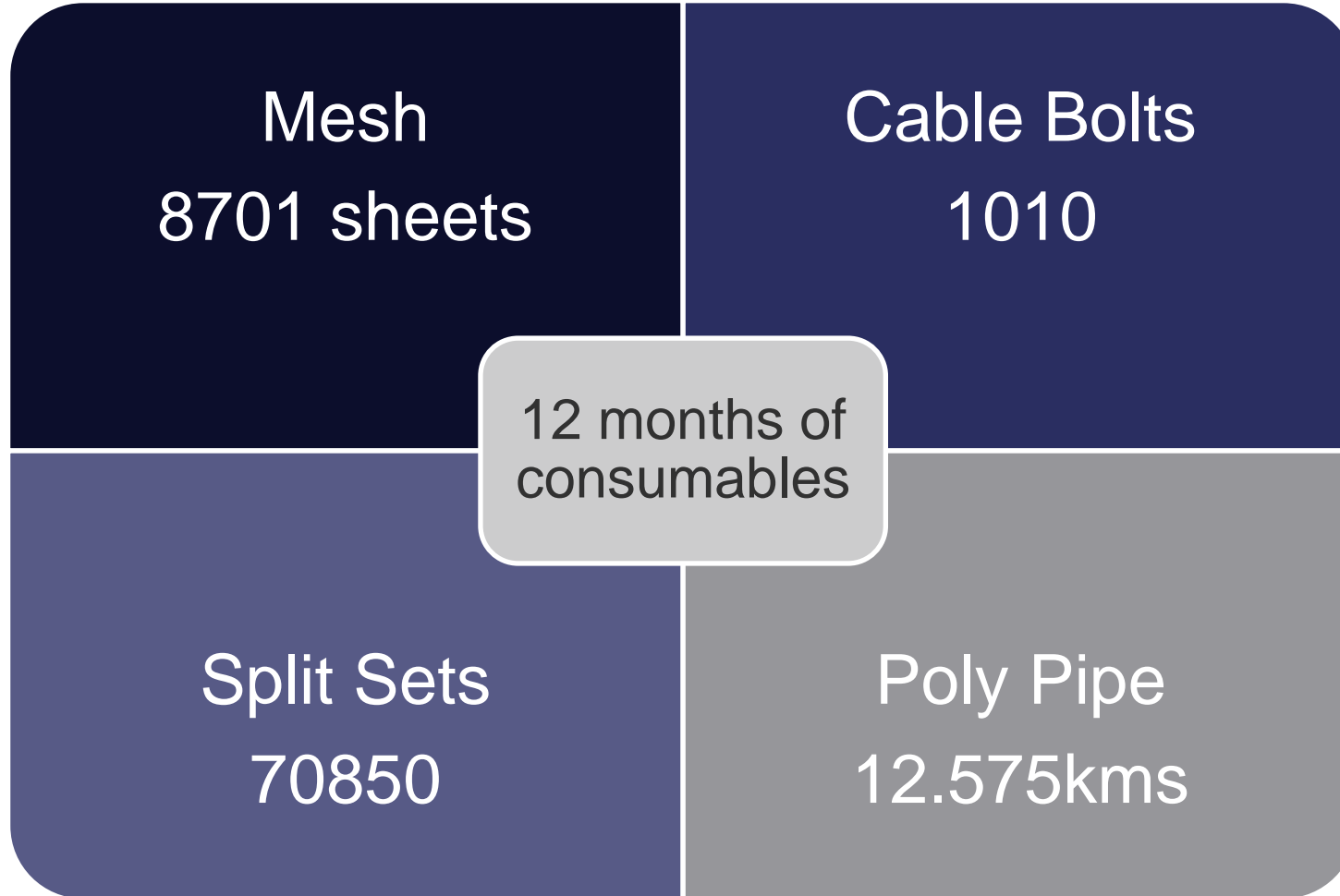
We are expanding our team at Snowy River and currently recruiting for the following roles

- Sustainability Manager
- Maintenance & Engineering Manager
- Jumbo Operators
- Narrow Vein Jumbo operators
- Multi skilled miners
- Fitter
- Electrician

Further details on our website or email
info@federationmining.com.au



Fun Facts



Stay In Touch



Our Website

www.federationmining.com.au

Mailing List

info@federationmining.com.au

Community Contact Line

03 732 7028

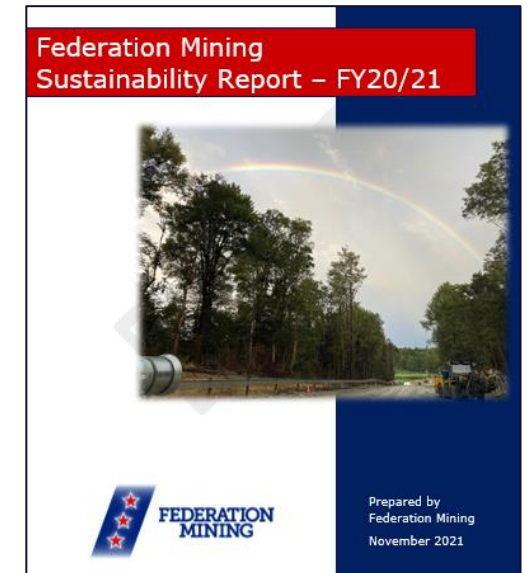
Follow Federation Mining on LinkedIn



Sustainability Report



Our 2022 Sustainability Report is available online and can be accessed by using the QR code.



Thank you for your interest in Federation Mining