

**Federation Mining**

**Community Meeting**

**October 2022**



# Organisational Overview



- Federation is Australian company privately held with primary investors Australian Super & Crown Holdings (NZ).
- We are developing the Snowy River Mine including the twin declines, drill platforms, completion of resource drilling and a feasibility study under a deed of agreement.
- We plan to deliver a modern underground narrow vein gold operation that produces around 65-70koz/ annum for minimum 10-year mine life.
- Generate significant local employment over the next 10+ years.
- Minimal impact to land with small surface infrastructure footprint for processing plant on private land.
- We recognise that mining is a temporary land use and are committed to high standards of environmental stewardship for the full life cycle of our operation.
- We intend to operate beyond legal compliance to deliver against the obligations of our social license and help to shape industry leading environmental practises.
- Federation recently received an industry award for our ESG program (Environmental, social & governance)





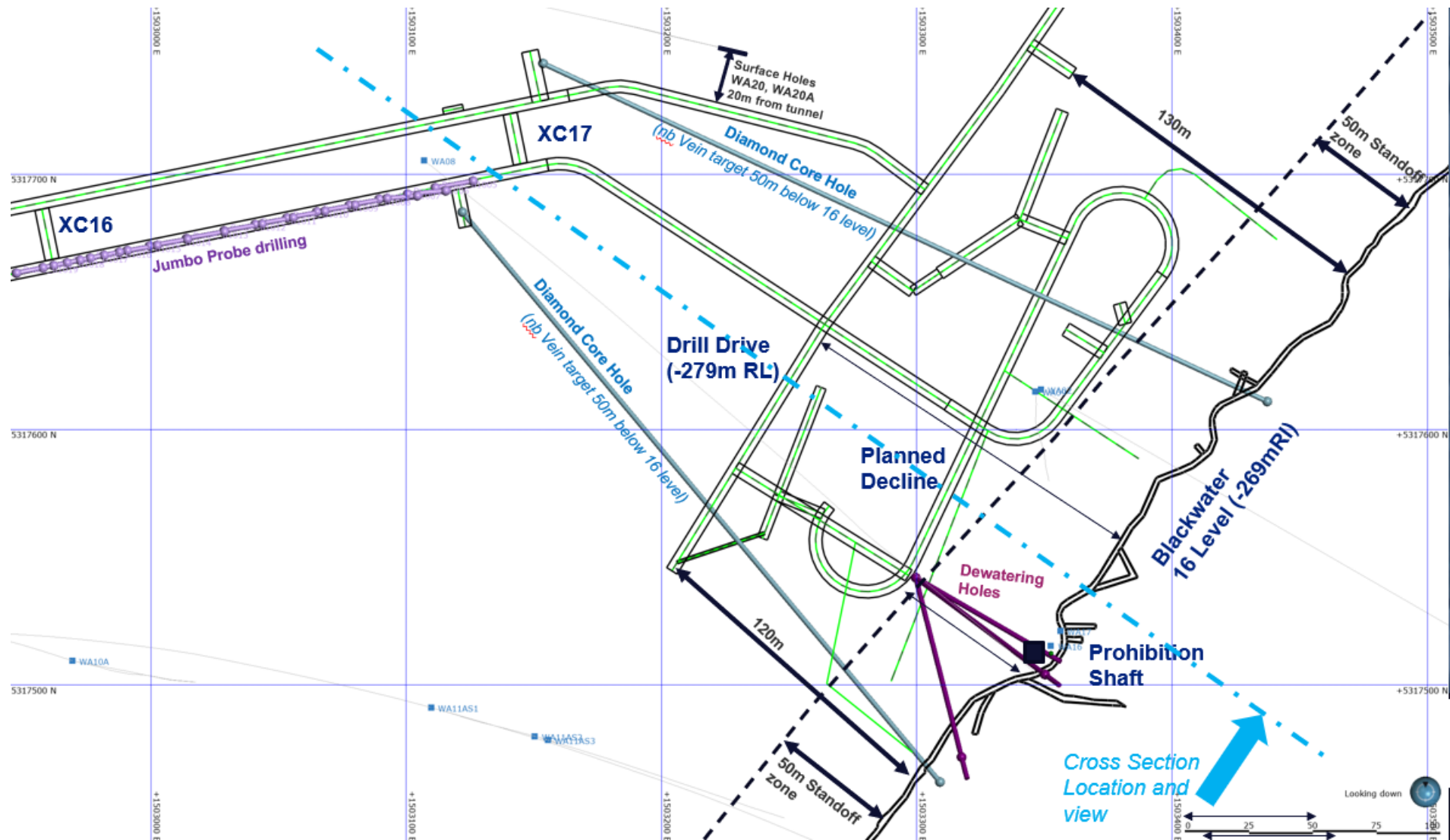
# Snowy River Mine Timeline



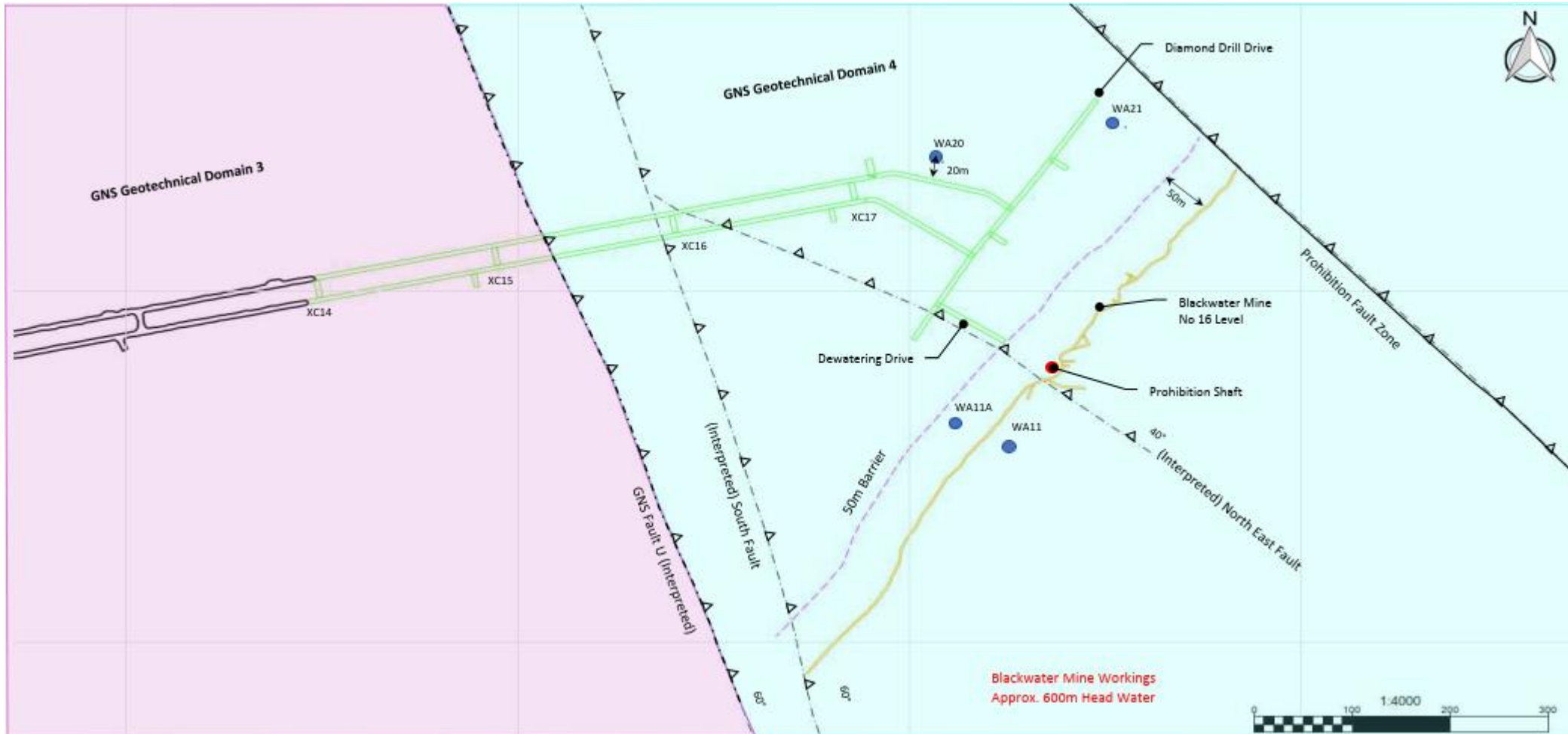
- Early works completed in late 2020
- We have employed 47 people onsite, 80% reside on the West Coast.
- To date, over 5700m of decline development have been completed across the twin declines.
- Application for new or varied Resource Consent submitted in June 2022.
- Developed an internal technical review document (updated PEA)
- Dewatering program
- Extensive drill program planned for early 2023.
- Technical studies and review post drilling.
- Decision to mine late 2023.
- Subject to Resource Consent commence processing in late 2024.



# Dewatering



# Dewatering





# Water Treatment Ponds

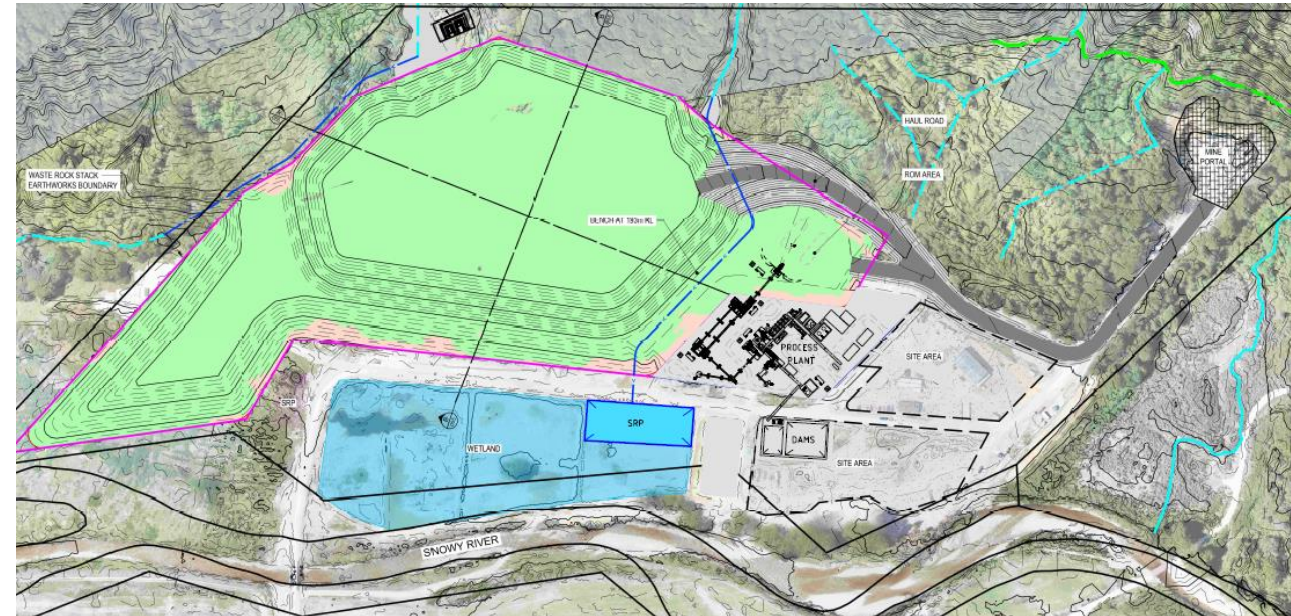




# Resource Consent



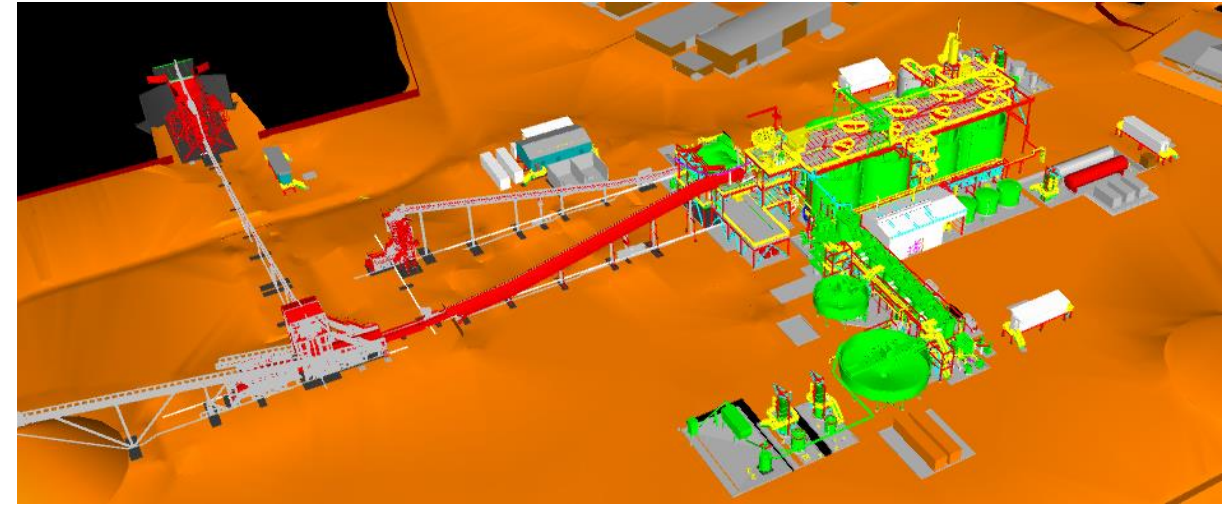
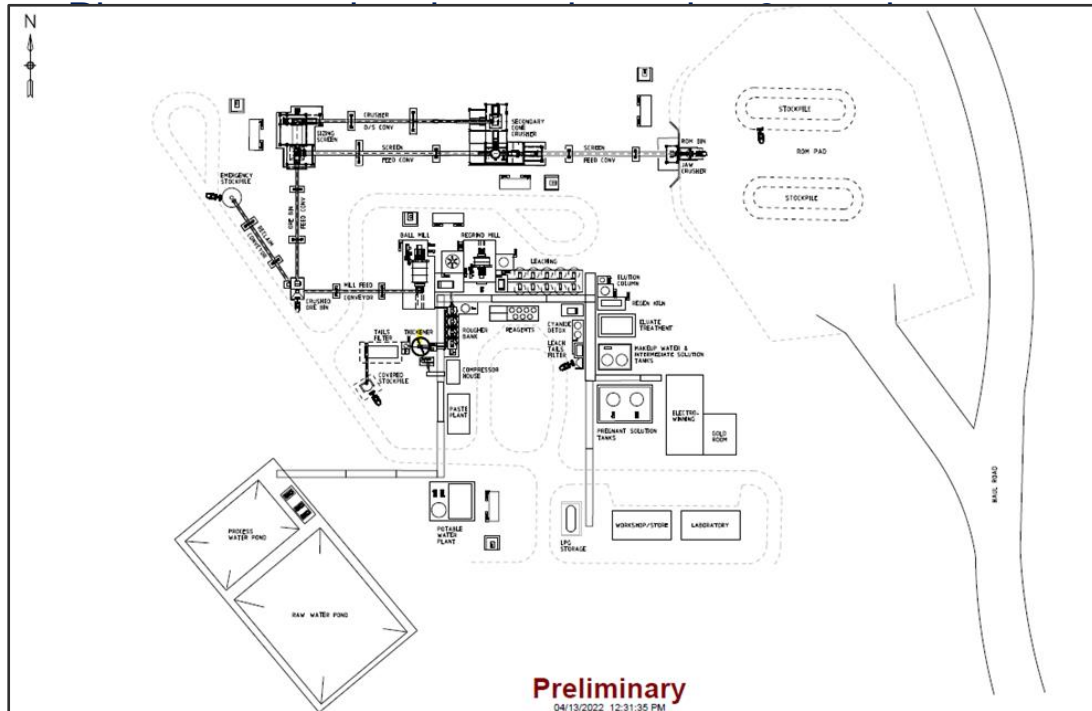
- We have submitted a Resource Consent Application to build and operate a processing plant onsite at Snowy River.
- Federation understands the importance of being a responsible sustainable mining company in New Zealand and we have been actively engaging with the community and our stakeholders on our plans for the future of the project over the past year.
- We engaged New Zealand based environmental and technical specialists to assist in preparing our Resource Consent Application to minimise our impacts on the environment while ensuring we maximise the economic opportunity for the West Coast.
- Technical reports were prepared on Waste Rock Stack design, landscape, geo chemistry, water management, noise & vibration, dust and emissions, traffic, heritage, aquatic ecology effects & terrestrial ecology.
- The Snowy River workforce is expected to grow from 50 to 150 personnel during production which will also bring greater opportunities for partnerships with local New Zealand businesses.
- The application has now been submitted following extensive consultation with the Community, Neighbours, Government Agencies and other interested parties.



# Snowy River Mine Process Plant



- Modern gold processing plant including crush, grind and floatation circuits
- Throughput 300,000 tonnes per year with 95% recovery
- Modular plant will occupy 10,000 m2 of disturbed land

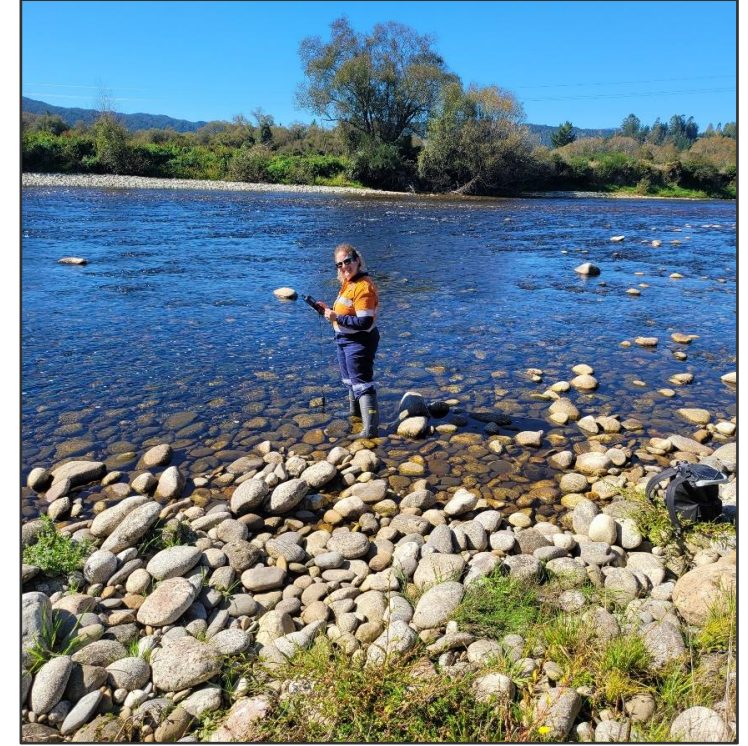


- Plant commissioning in late 2024
- 50% Waste to be placed on surface waste rock stack and 50% underground in form of paste fill
- All water runoff from surface waste rock stack to be captured and treated
- Some ore treated with cyanidation and detoxified in circuit



# Environment

- We have committed to undertake performance monitoring in addition to regulatory environmental monitoring to allow us to maximise our ability to protect the environment.
- Federation has planted around 11,000 plants onsite at Snowy River this year
- 700 plants offsite around the West Coast.
- Tracking our emissions and reporting externally.
- Snowy River manages waste streams with a program in place to recycle cardboard and metals.
- Investigating the potential for a run of river hydro project.
- Installing a clay line on our waste rock stack



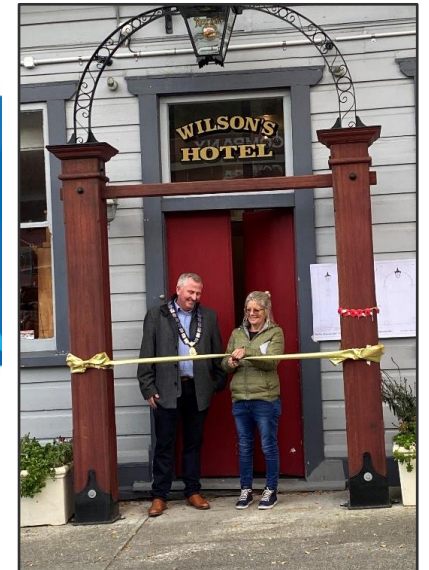
## Emissions intensity

0.32 TCO<sub>2e</sub> per metre developed

# Social Performance



- Federation values the important role community organisations play locally
- We have supported a range of projects and organisations – emergency services, sport, historical, tourism
- Spent \$27 million dollars over the last 12 months in the Regional economy
- Paid \$1.5 million in Government tax and levies
- Passing bays to be installed on Snowy River Road





# Our Team



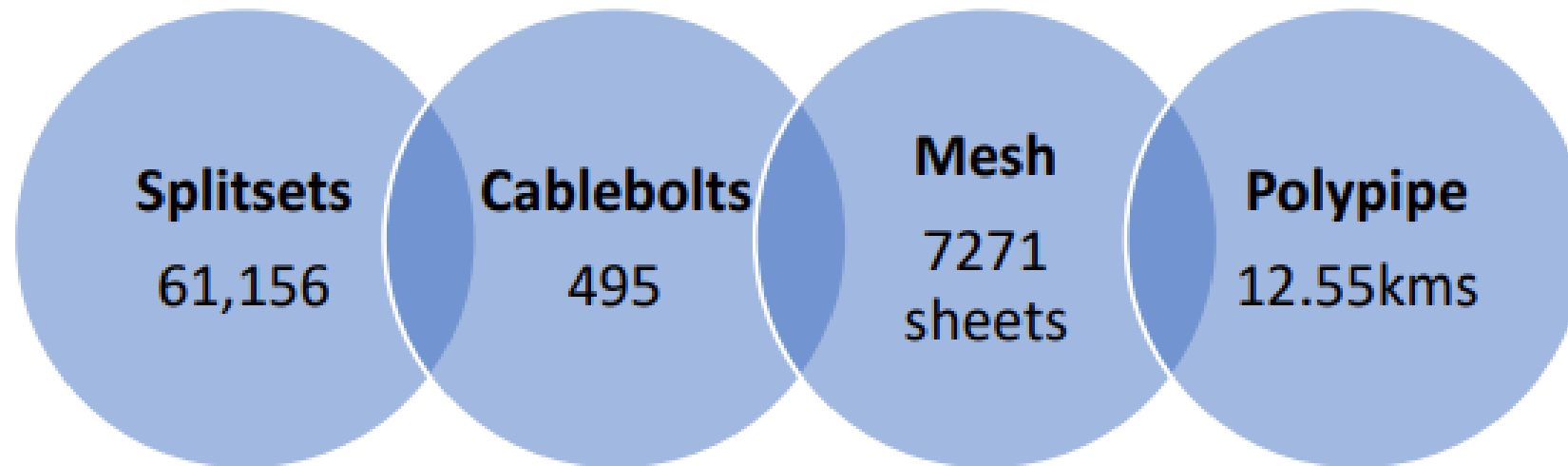


# Site Lay out





# Fun Facts



*Last 12 month of consumables*

# Stay in touch



## Our Website

[www.federationmining.com.au](http://www.federationmining.com.au)

## Mailing list

[info@federationmining.com.au](mailto:info@federationmining.com.au)

## Community Contact Line

03 732 7028

Follow Federation Mining on LinkedIn

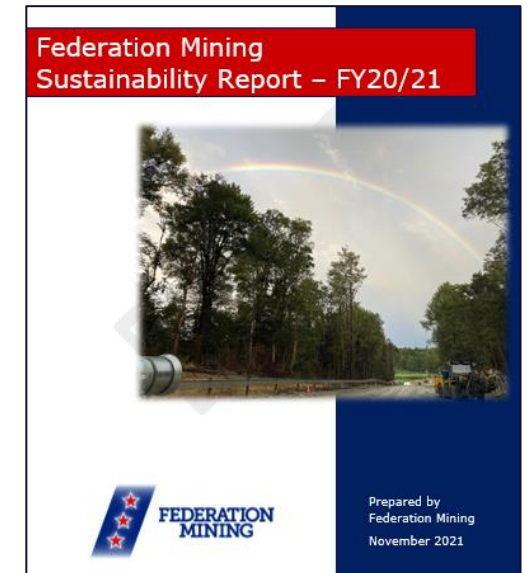




# Sustainability Report



Our 2022 Sustainability Report is available online and can be accessed by using the QR code.



Thank you for your interest in Federation Mining