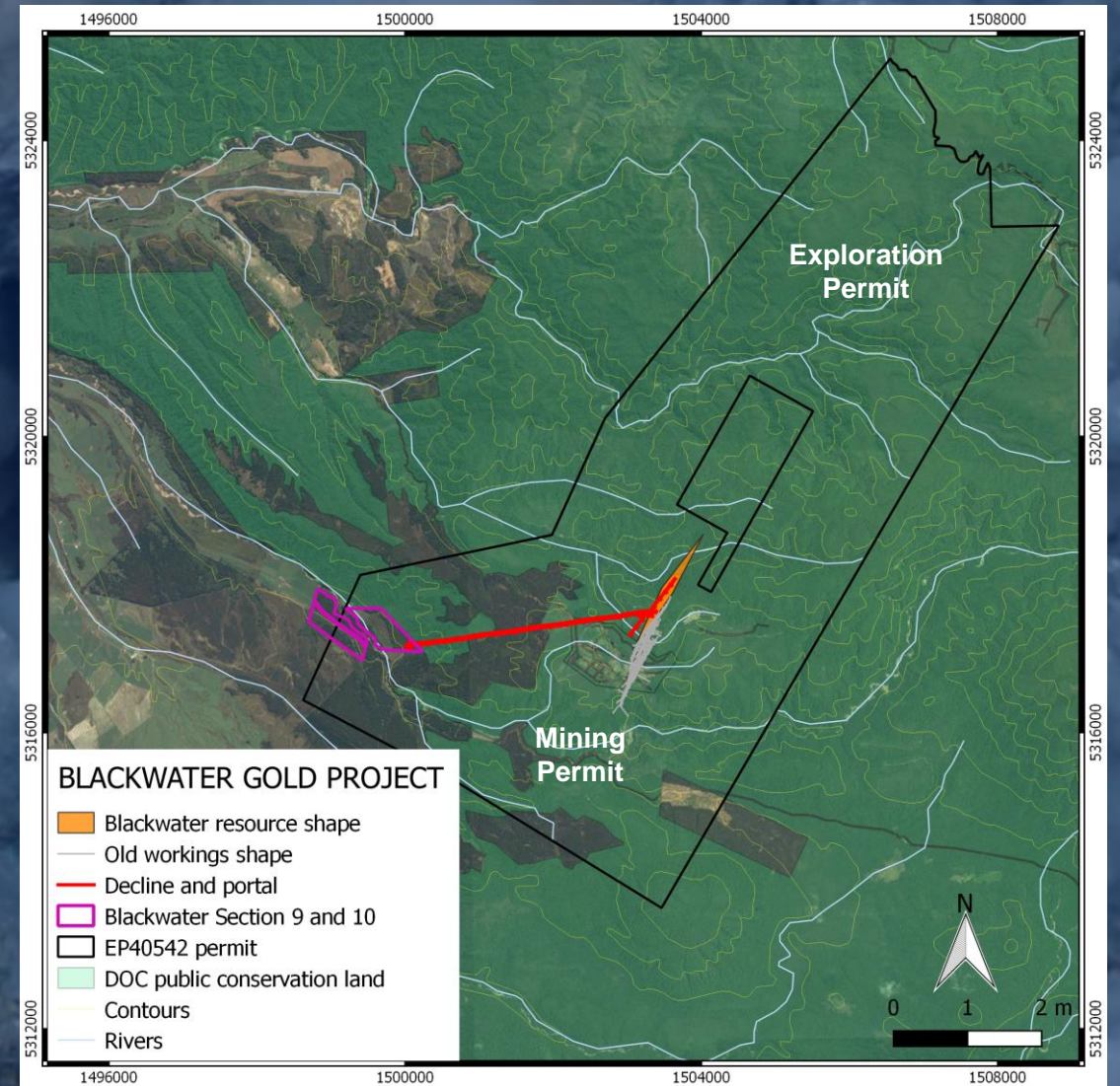
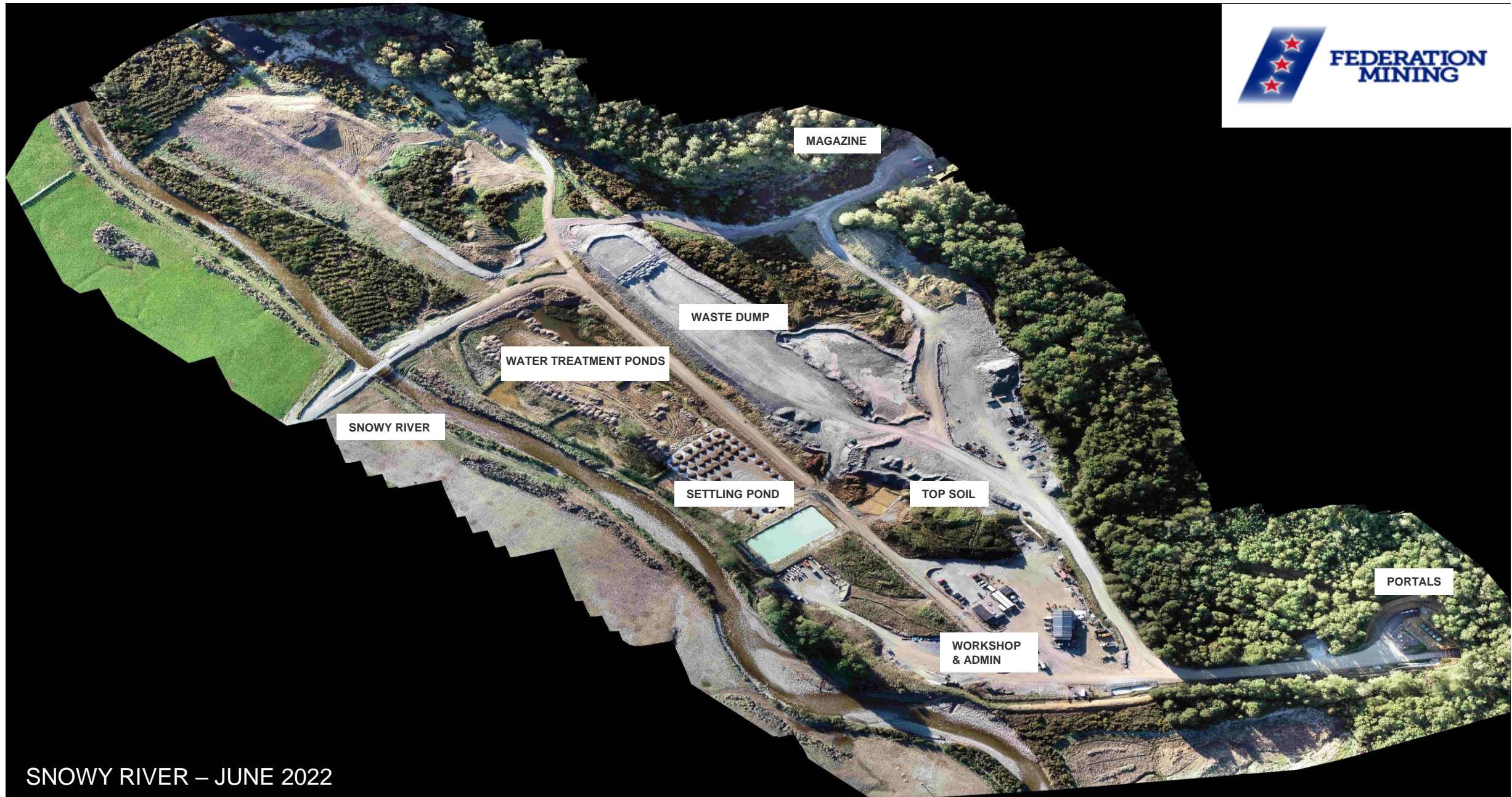


# Federation Mining Snowy River Mine Minerals West Coast Forum

Mark Le Messurier  
Managing Director  
Federation Mining







SNOWY RIVER – JUNE 2022



# Snowy River Overview

In situ grade of  
23g/t  
Metallurgical  
recovery of 96%

Production  
commencing  
2025  
70kozpa

- Target 10 year LOM 70,000 ozpa @ A\$1,000/oz AISC
- Purchase agreement with OceanaGold 2018
- 20 year mining permit granted 2018
- Australian Super and Crown Holdings investment 2020
- \$40m spent to date
- 4,500 metres of 8,000 metres of development completed



Snowy River Twin Portal & Decline Access

# Snowy River (Blackwater) Early History



- Early alluvial mining in the Snowy Valleys from 1866;
- Quartz reef discovered in 1905;
- Blackwater Gold Mine mine commenced in 1906;
- Continuous production until 1951
- Mine Shaft collapsed 9th July 1951 and mine closed
- Over 700koz produced over vertical depth of 700 metres
- Renamed Blackwater to Snowy River Mine 2020



Early mining at Blackwater

# Path to Redevelopment

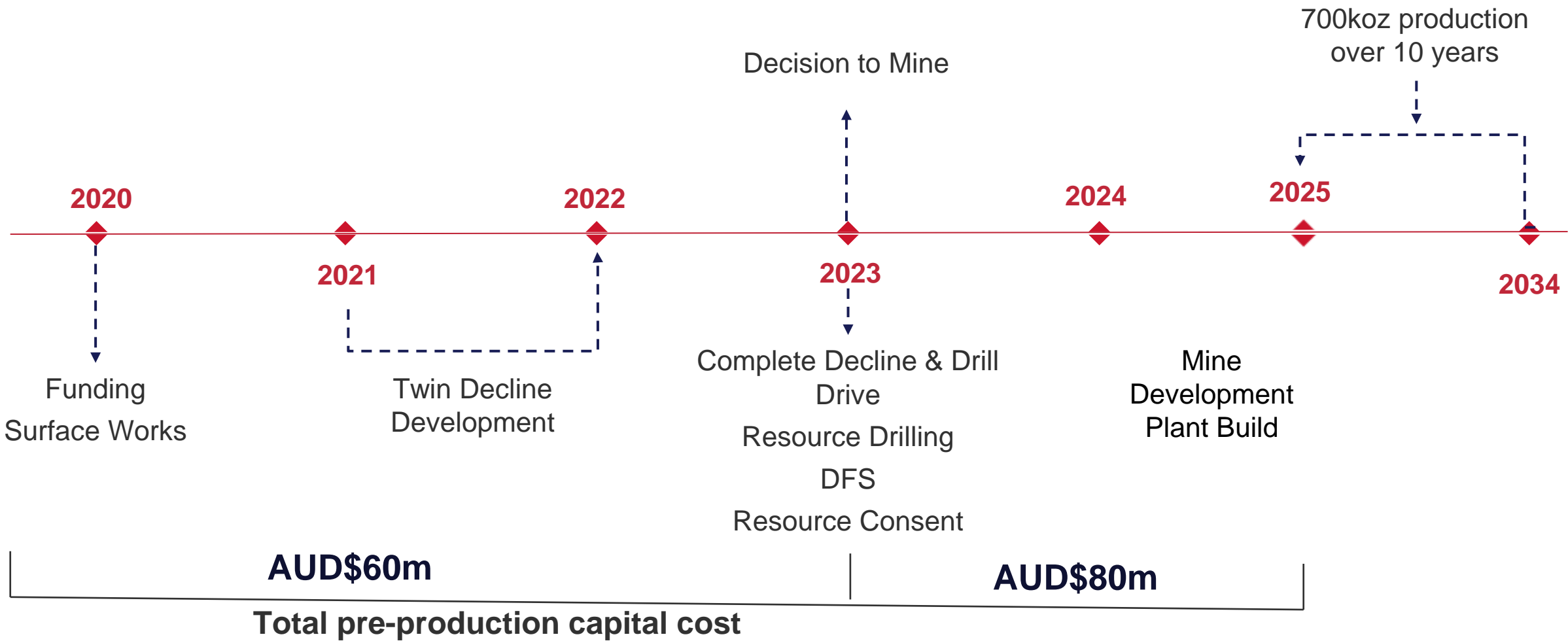


- OceanaGold deep hole drill program 2011
- Preliminary Economic Assessment 2014
- Project Deed Tasman Mining 2018
- Mining Permit 2018
- Crown Holdings (PGF) funding 2019
- Australian Super funding 2020
- Landowner Agreement 2020
- Decline development 2021 -2023
- Resource Drilling 2023



Managing Director Mark Le Messurier with local MP Damien O'Connor

# Investment Timeline – Snowy River Mine





# Funding Strategy Snowy River



## Stage 1 Decline and Drilling

- Australian Super A\$50m Convertible Note
- Australian Super A\$37m Share Portfolio
- Crown Holdings NZ\$15m Loan

## Stage 2

- Narrow Vein Fleet
- UG Production Development
- Process Fleet
- OGC Asset Purchase
- Royalty Purchase

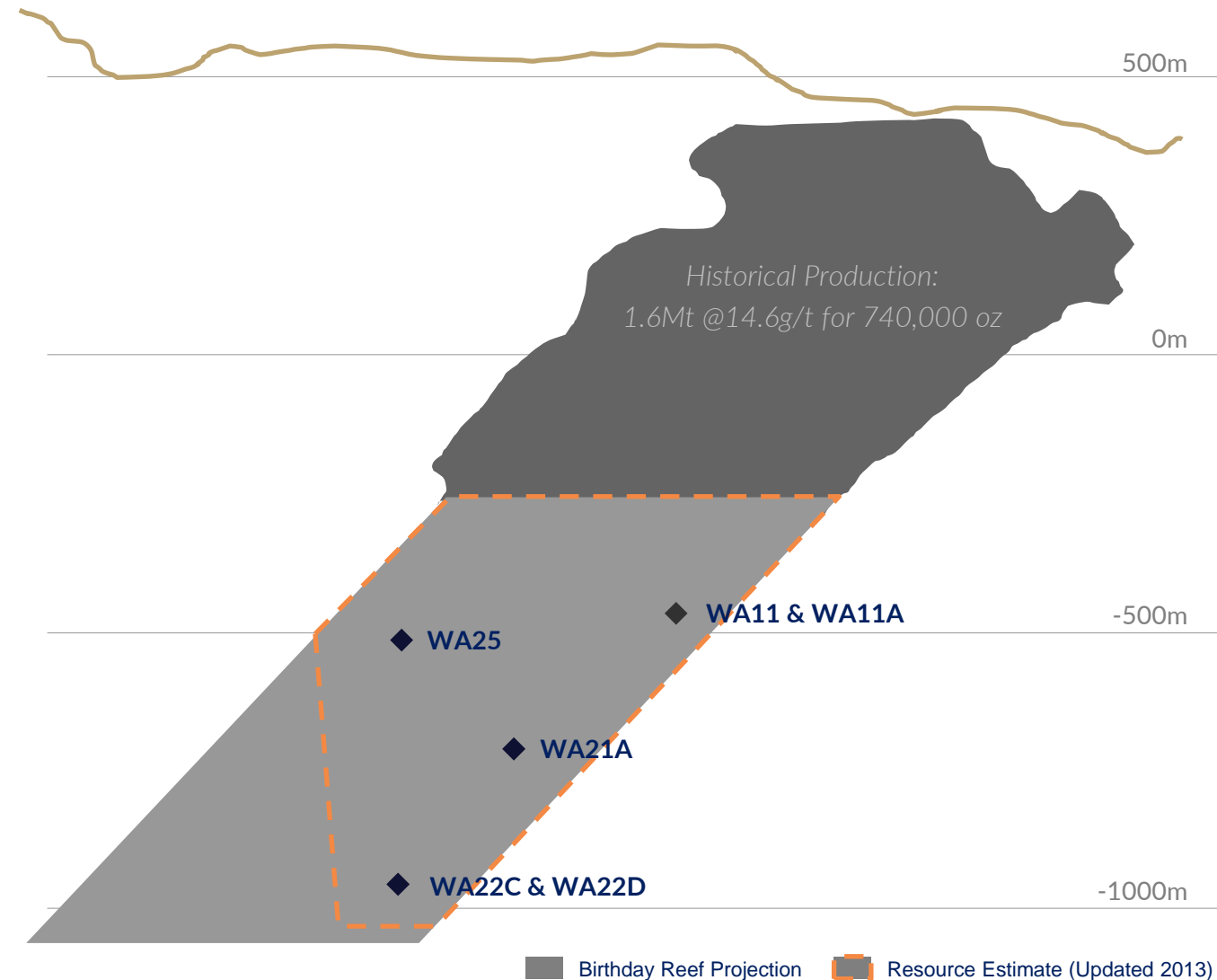
# Blackwater Drilling by OGC



## COMPLETED BY OCEANAGOLD 2011 - 2013

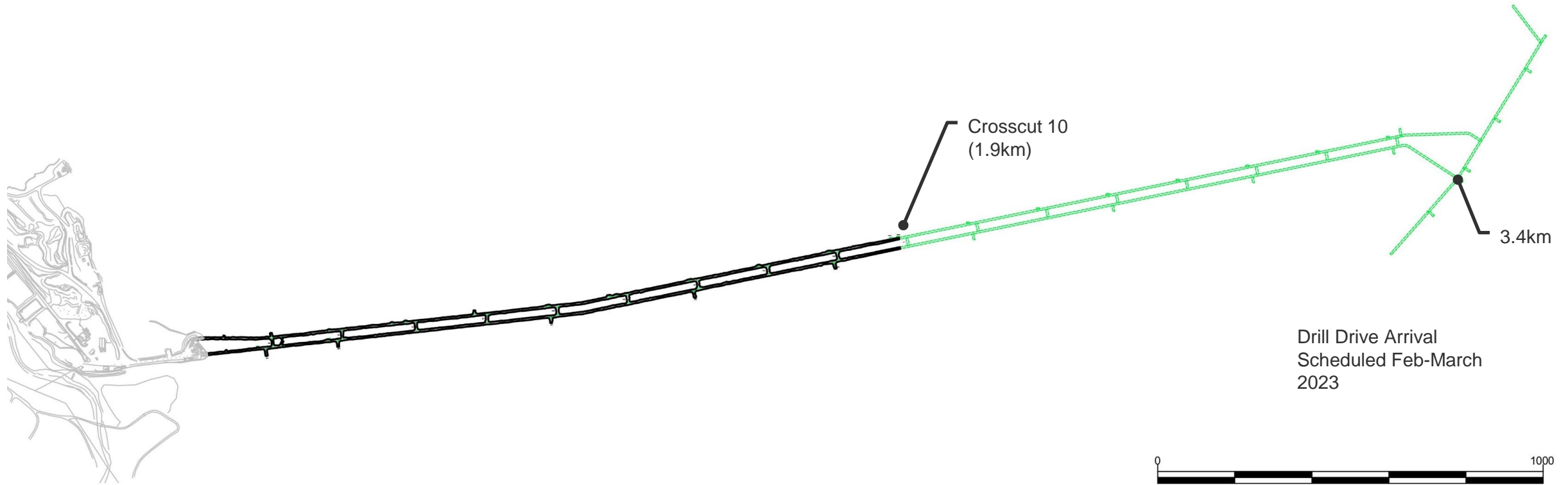
- **Six holes intersected high-grade mineralisation and confirmed the deposit continues at depth**
- All holes intersected gold mineralisation
- Gold intersected 650m below the base of historical workings
- Best drill results included:
  - **WA21A** : 0.5m at **23.3g/t Au**
  - **WA22D** : 1.0m at **85.2g/t Au**
  - **WA11A** : 0.5m at **59.7g/t Au**
  - **WA25A** : 0.5m at **134.0g/t Au**
  - **WA25** : 0.3m at **62.4g/t Au**

*Comprehensive production and geology records provide confidence in the inferred resource*

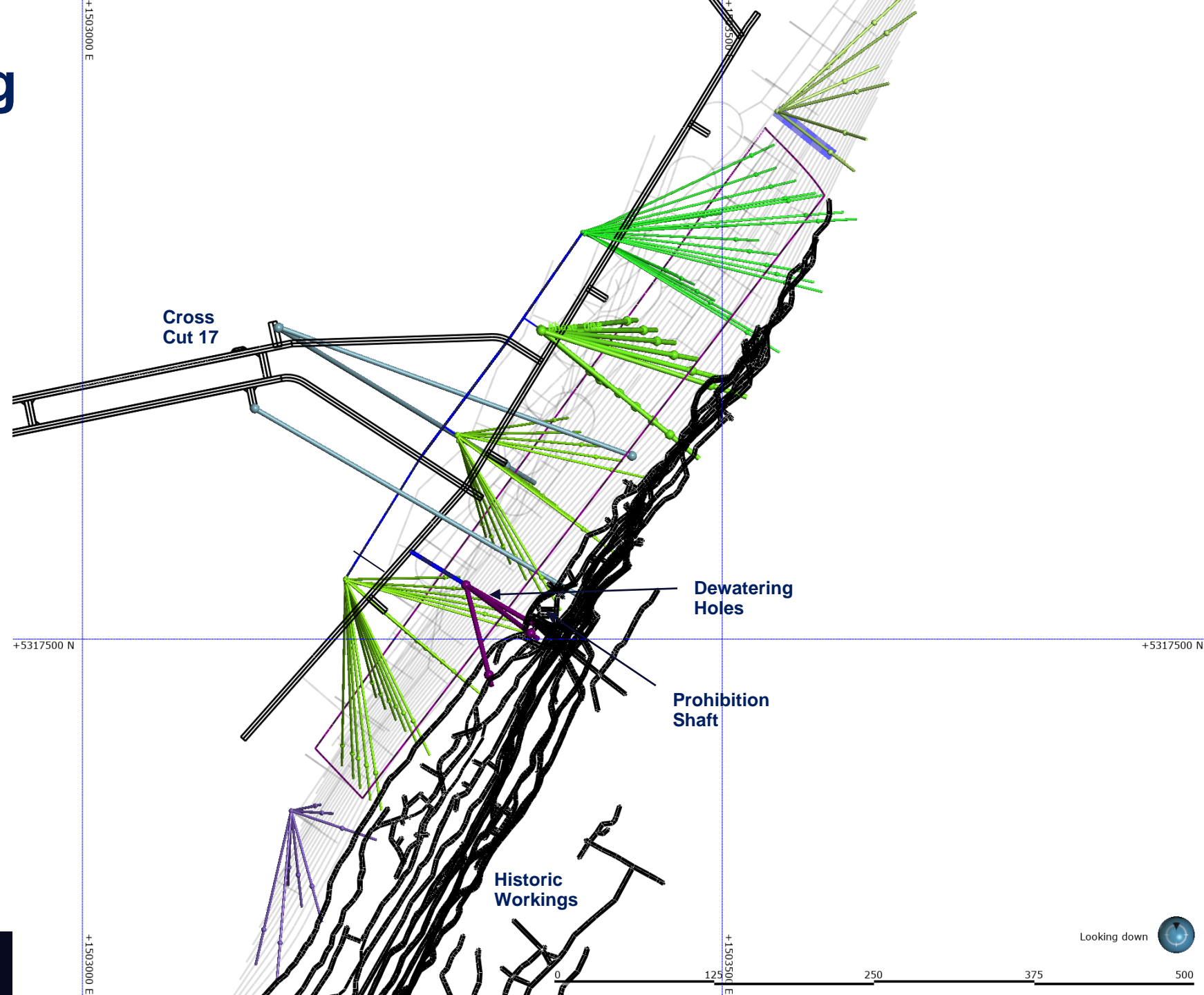




# Decline Path and Position

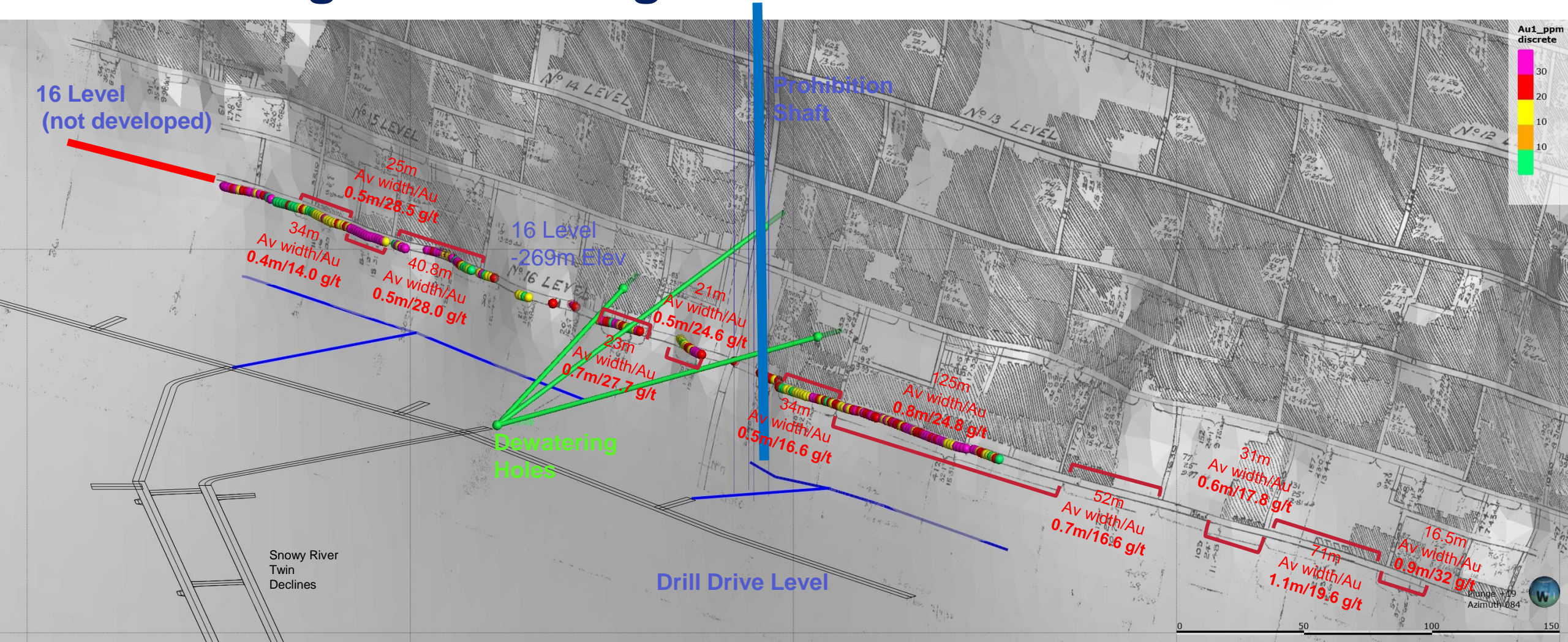


# Planned UG Drilling





# Dewatering Old Workings

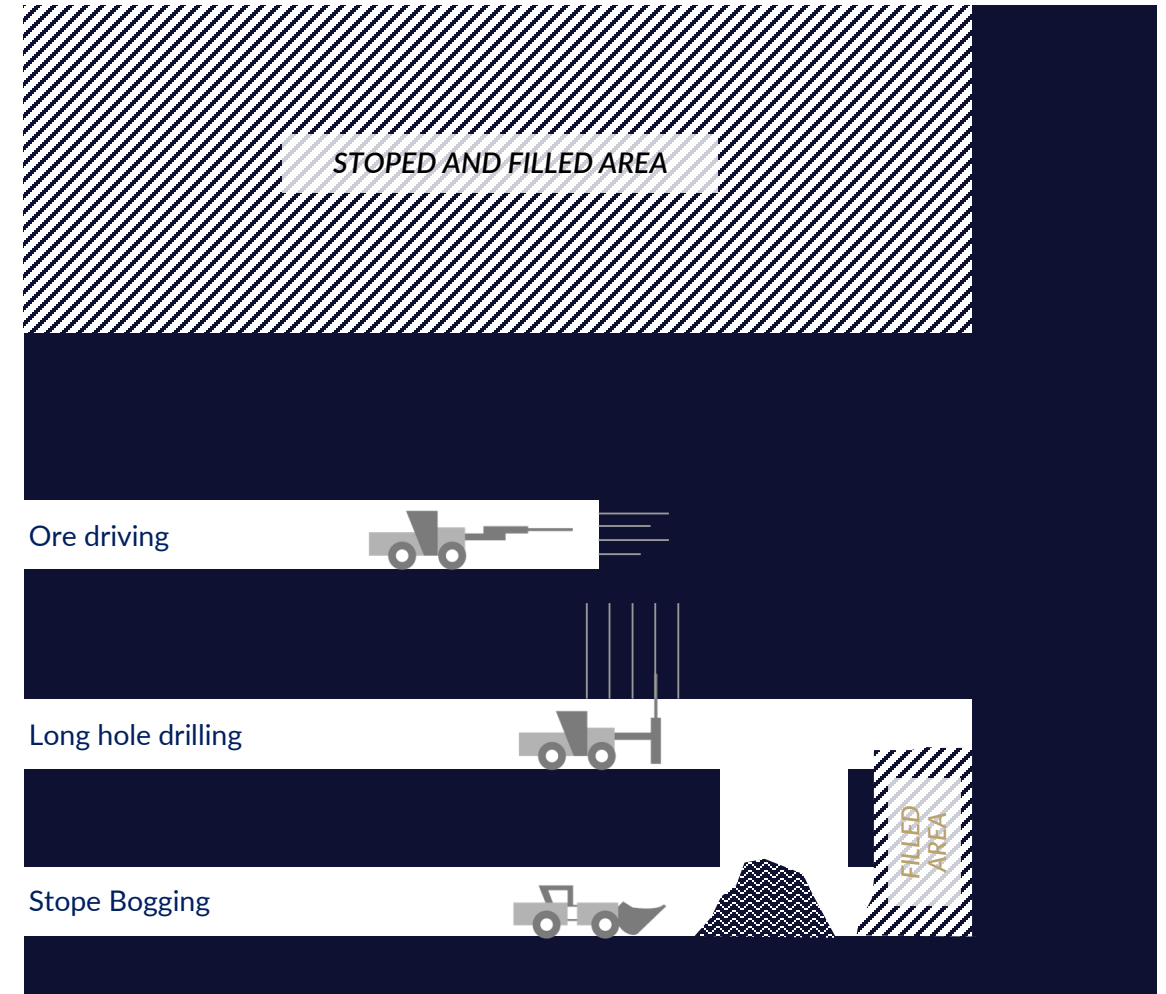




# Mining at Snowy River

## APPLYING MODERN TECHNIQUES TO A SUCCESSFUL HISTORIC MINE

- Maximise productivity and safety, and utilise modern narrow vein mining equipment
- Proposed mining method uphole bench stoping





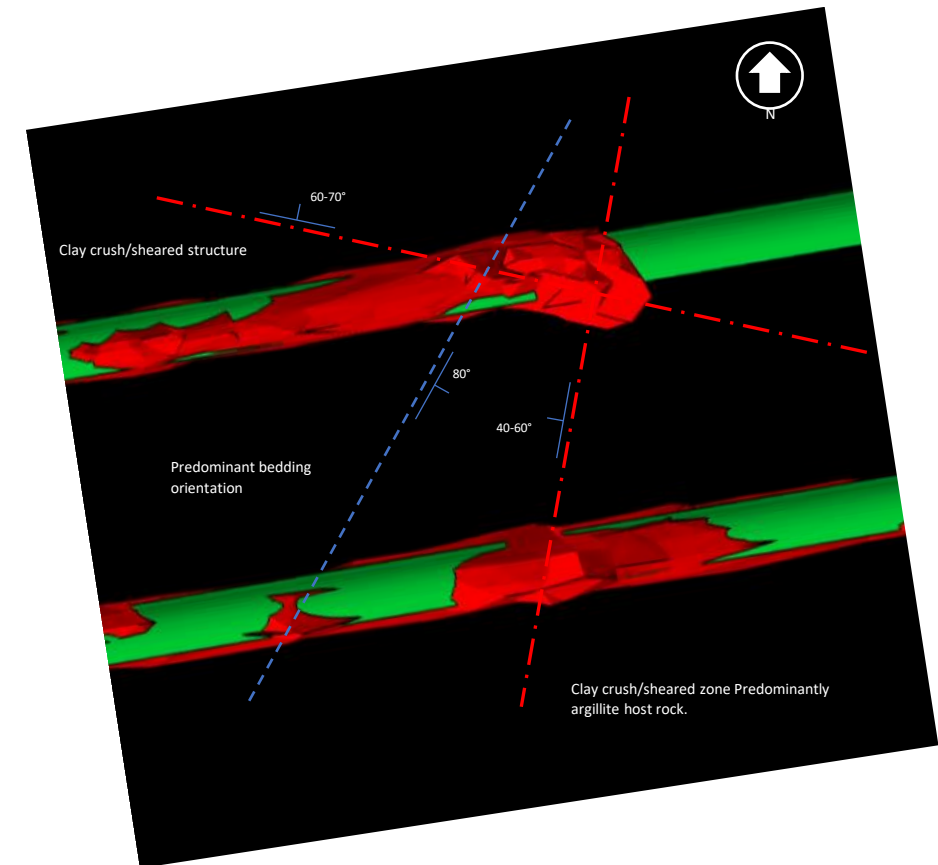
# Project Progress & People

- \$20m invested in West Coast region to date to employees, suppliers, and contractors
- Steel work, machinery repairs, shotcrete, truck and labour hire, civil works, land lease payments, workwear
- 46 people employed on site, 75% locally
- 4,500 metres of development completed
- Three recordable injuries
- Training of employees
- Resource Consent submitted 17<sup>th</sup> June 2022



# Challenges

- Securing investors
- Completing surface construction and equipment procurement
- Ground conditions in the first 200 metres
- Recruiting an experienced team
- Stabilising leadership
- Establishing safety systems as mining started
- Border closures
- OEM in country support
- Rising labour and consumable pricing

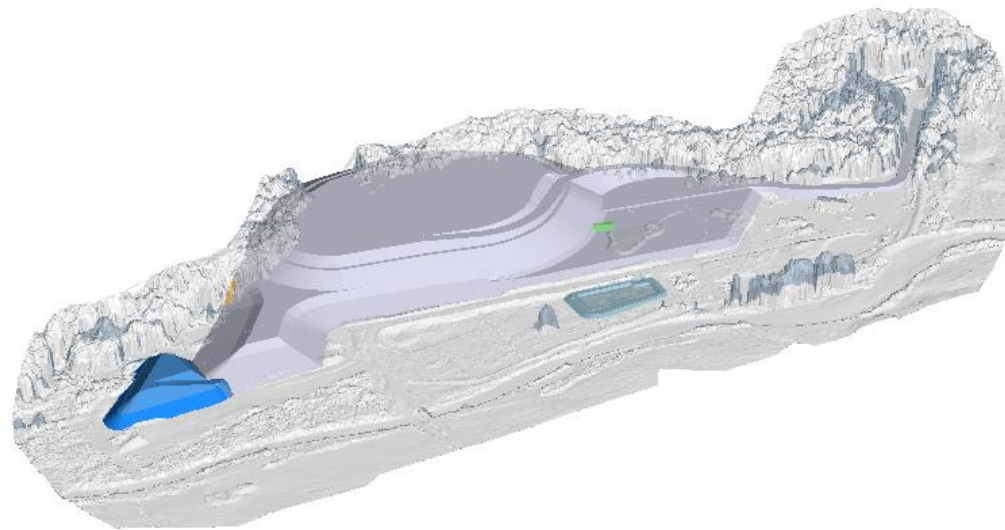
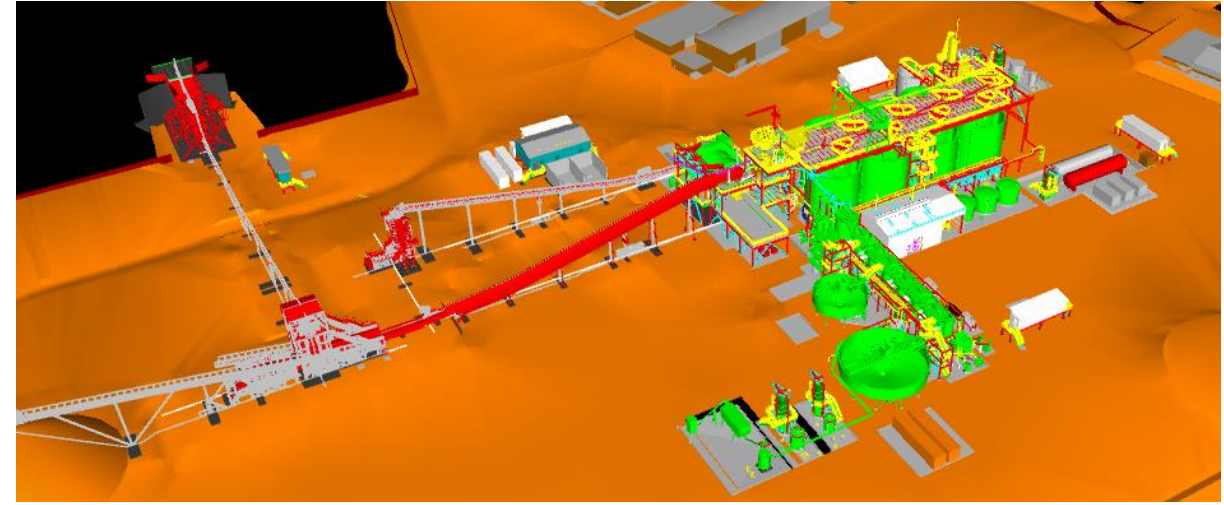




# The Future



- Drilling and modelling 2023
- Feasibility study and design 2023
- Build 300 ktpa Process Plant 2024
- Mine production 2025
- 110 employees
- \$20m invested annually in West Coast
- Expanded surface exploration



Plunge +27  
Azimuth 075



# Environmentally Sustainable Project



All mine and process water reused and/or neutralized and filtered

Cyanide is destroyed and all sulphide tailings stored UG as backfill

30  
hectares

Minimal land disturbance

Waste rock and other dry tailings placed underground as backfill or stored in engineered and stable dump on surface

Private land access only and operation 700m below DoC land

Operation of electric/battery powered mobile machinery rather than diesel equipment

Continued **commitment** to safety and environment



# Closing

- Government support
- OceanaGold
- Ngai Tahu
- Landowner
- NZPM





# Stay Up To Date



## Contact Federation Mining

Community Contact Line +64 3 732 7028.

Website [www.federationmining.com.au](http://www.federationmining.com.au)

Email [info@federationmining.com.au](mailto:info@federationmining.com.au)

LinkedIn [www.linkedin.com/federationmining](http://www.linkedin.com/federationmining)

## Monthly Business Update

We can email directly to you or view on our website or LinkedIn page. please advise our staff or send us an email to be added to the mailing list.

## For More Information

### Federation Mining (Sydney)

Simon Delander +61 8330 6785

### Media Contact

Michael Vaughan, Fivemark Partners  
+61 422 602 720



# Early Works - Portals





# Early Works - Portals





# First Cuts – December 2020

