

# Federation Mining

## Snowy River Mine Community Meeting – May 2022

Mark Le Messurier – Managing Director  
Simon Delander – Vice President

# Snowy River Mine



- The Snowy River Mine site is located on the West Coast approximately 30 kms from Reefton.
- The Snowy River Mine is operated by Tasman Mining Limited who is a wholly owned subsidiary of Federation Mining Limited (Australia).
- The mining permit and operation is owned by OceanaGold, the current Resource Consent is in the name of OceanaGold.
- Federation Mining (FED) entered into a deed of agreement with OceanaGold for the development of the Snowy River Mine including:
  - the establishment of site infrastructure,
  - construction and development of twin tunnels and drill platforms
  - completion of resource drilling and a feasibility study





# Snowy River Mine



- Deliver a modern underground narrow vein gold operation that produces around 65-70koz/ annum for minimum 10-year mine life
- Generate significant local employment over the next 10+ years
- Minimal impact to land with small surface infrastructure footprint for processing plant
- Water management program prioritises the use of recycled water and storm water capture for operational usage
- Support the regional economy and seek partnerships with New Zealand based businesses



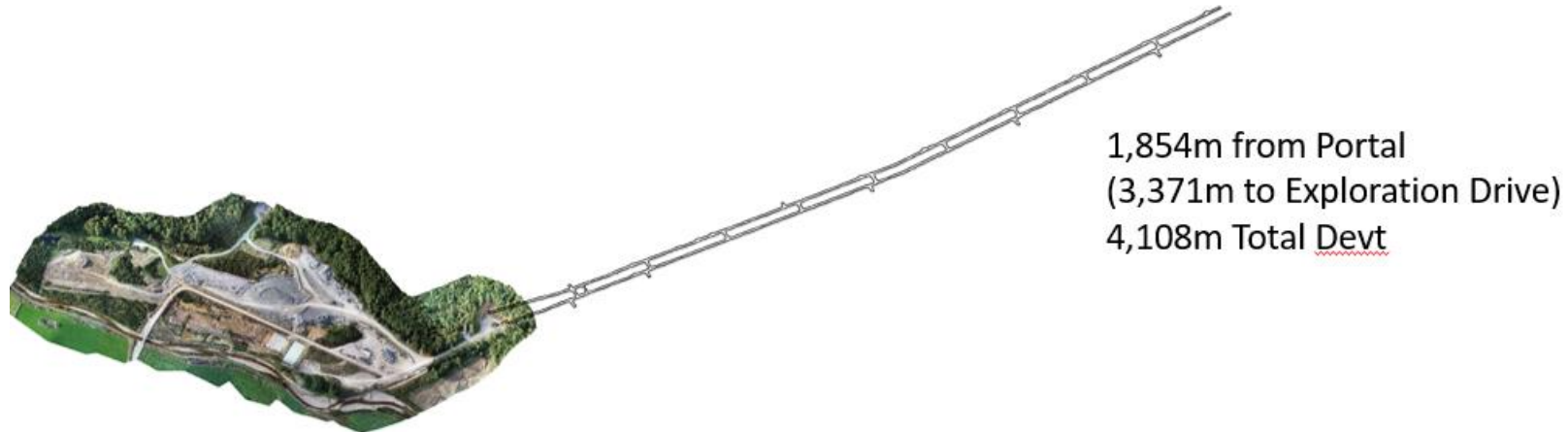
# Snowy River Mine

- Surface construction of the Snowy River Site was completed in late 2020.
- The operation employs 46 people, 80% of the team reside on the West Coast.
- Declines works commenced in December of 2020 and we have now completed over 4000m of declines.
- Application for new or varied Resource Consent planned for Mid 2022.
- Completion of declines in early 2023 and commencement of Resource Drilling program.
- Subject to Resource Consent commence processing in 2024.



# Decline Progress

Underground progress to 30<sup>th</sup> April 2022



Historical Workings

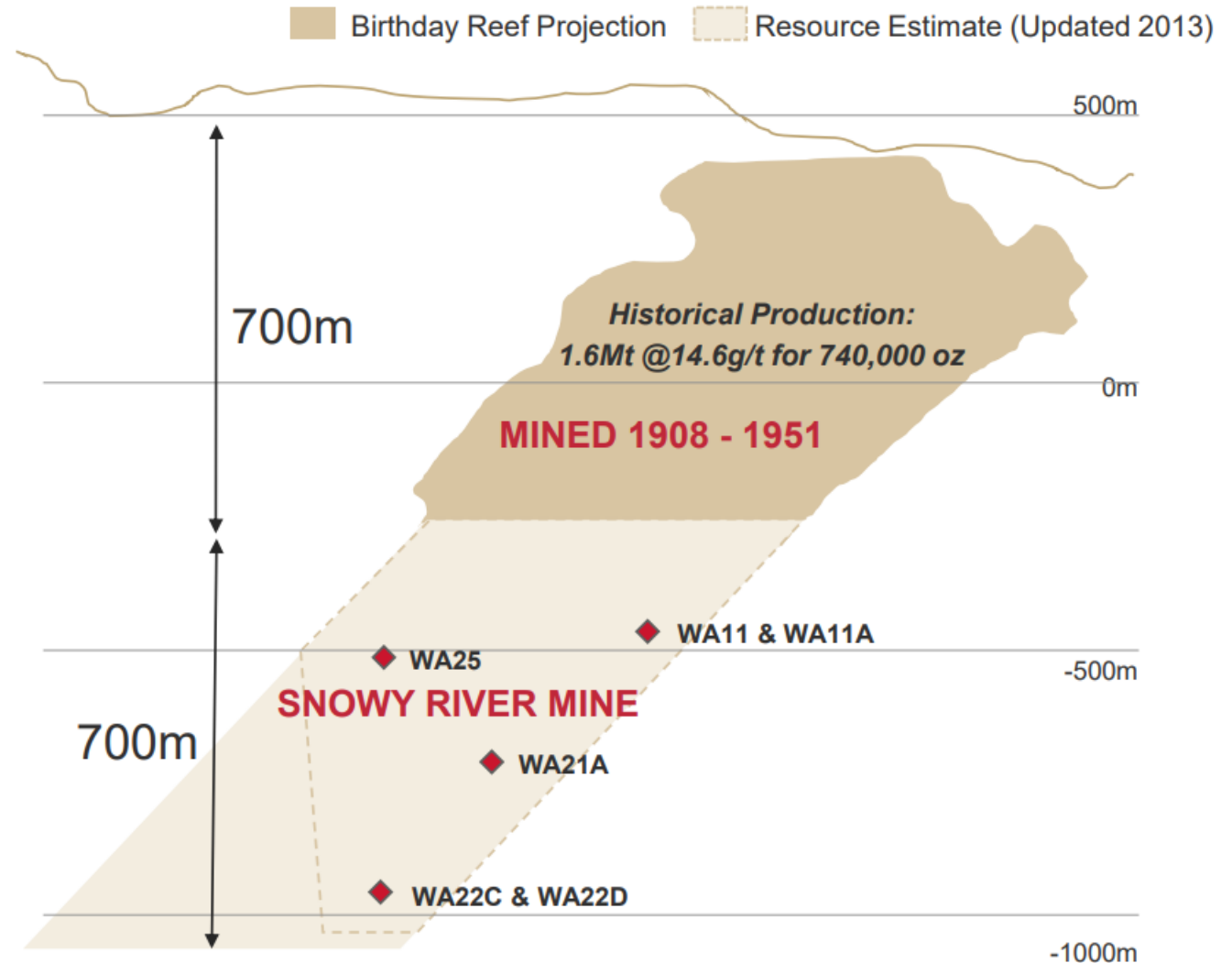
# Snowy River Mine



## Completed by OceanaGold 2011 - 2013

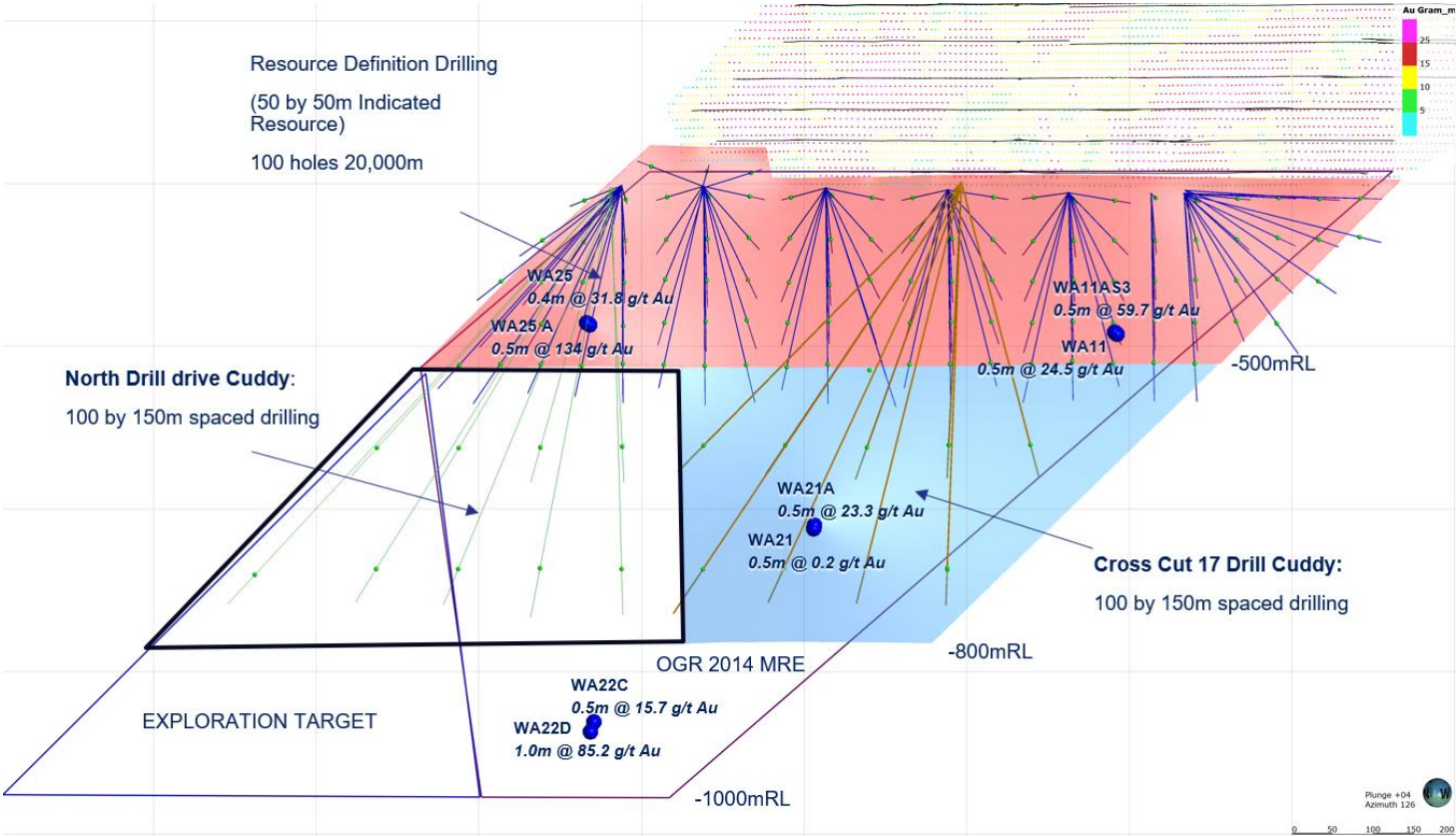
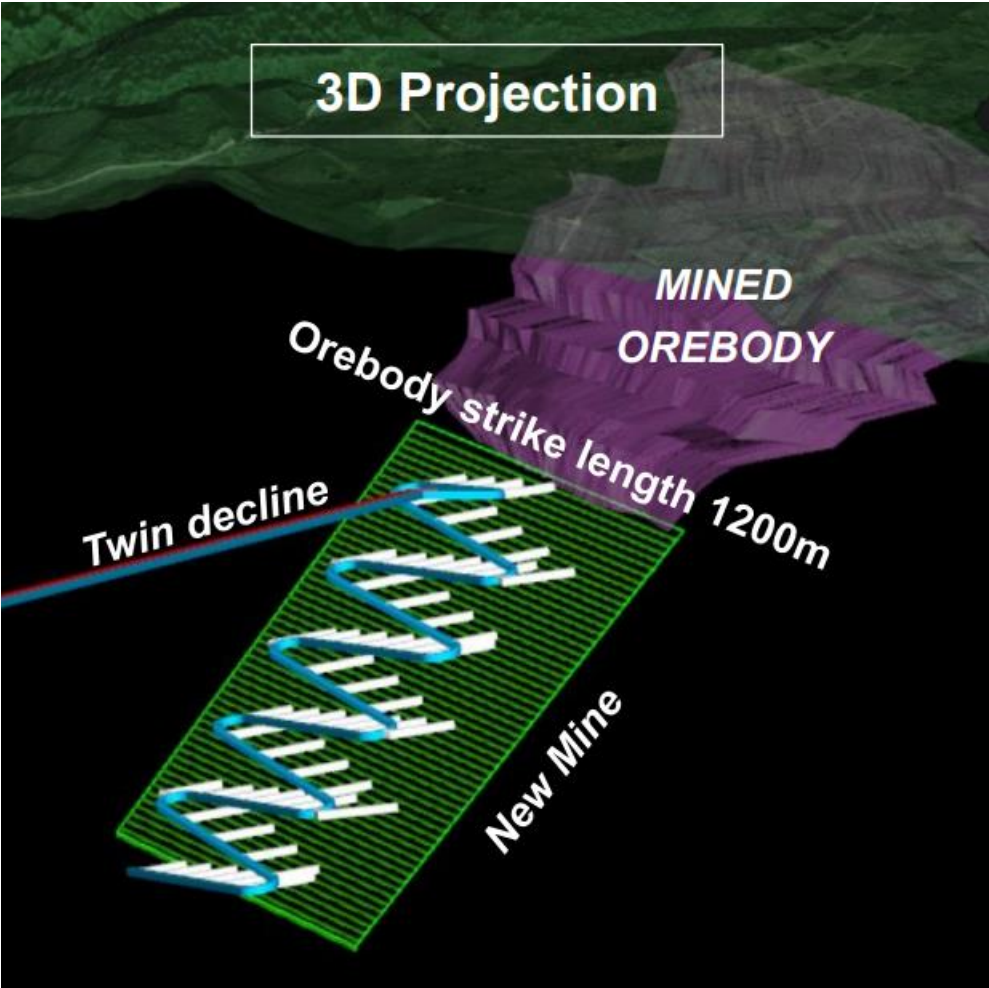
- ★ Six holes intersected high-grade mineralisation and confirmed the deposit continues at depth
- ★ All holes intersected gold mineralisation
- ★ Gold intersected 650m below the base of historical workings
- ★ Drill results included:
  - ★ **WA21A** : 0.5m at 23.3g/t Au
  - ★ **WA22D** : 1.0m at 85.2g/t Au
  - ★ **WA11A** : 0.5m at 59.7g/t Au
  - ★ **WA25A** : 0.5m at 134.0g/t Au
  - ★ **WA25** : 0.3m at 62.4g/t Au

Comprehensive production and geology records provide confidence in the inferred resource





# Drilling Program - 2023



# Existing Resource Consent

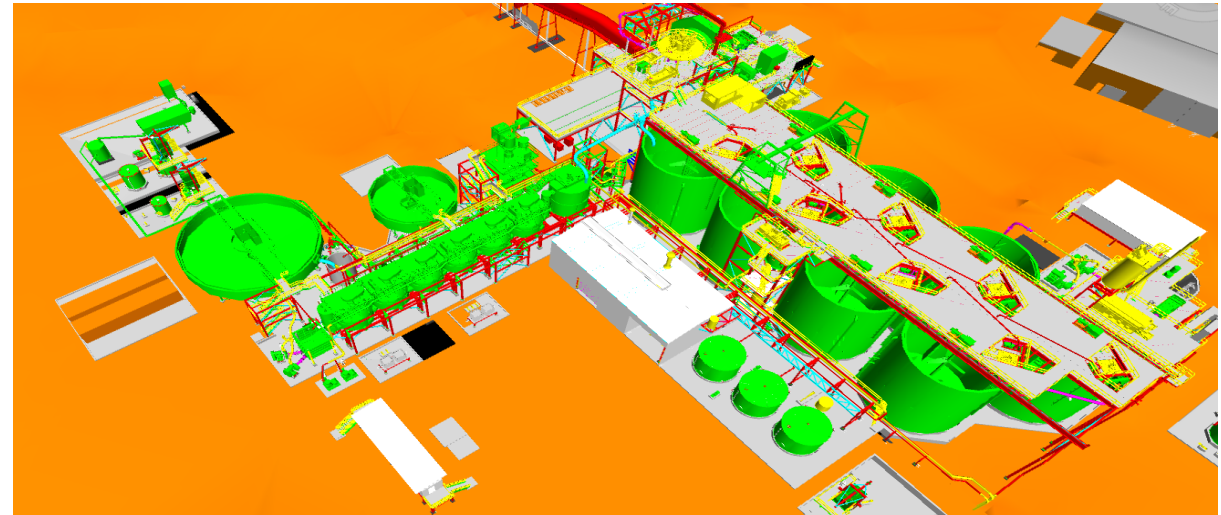
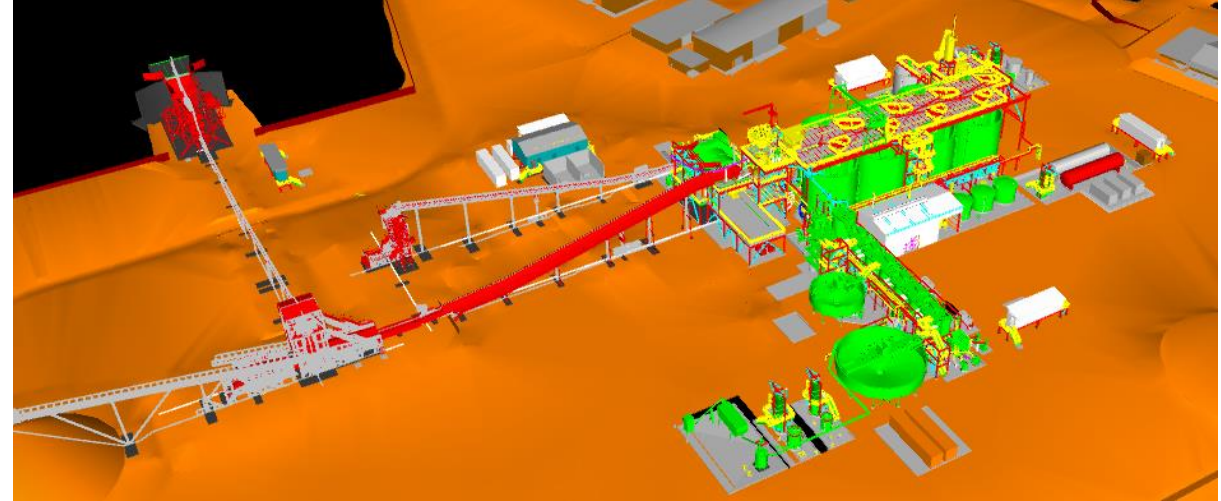
- 2014 West Coast and Buller District Council's granted resource consents to develop and operate the gold mine.
- Comprehensive existing environment.
- Activities authorised onsite include:
  - Construction of a twin tunnel decline at the Snowy River and establishment of surface mine infrastructure
  - Exploration drilling and trial mining and dewatering of the historic workings;
  - Mining of the ore body including soring and screening of the ore – with offsite processing;
  - Mine closure and decommissioning. The constructed passive water management treatment system is to remain.
- Closure plan and environmental bond lodged with West Coast Regional Council.





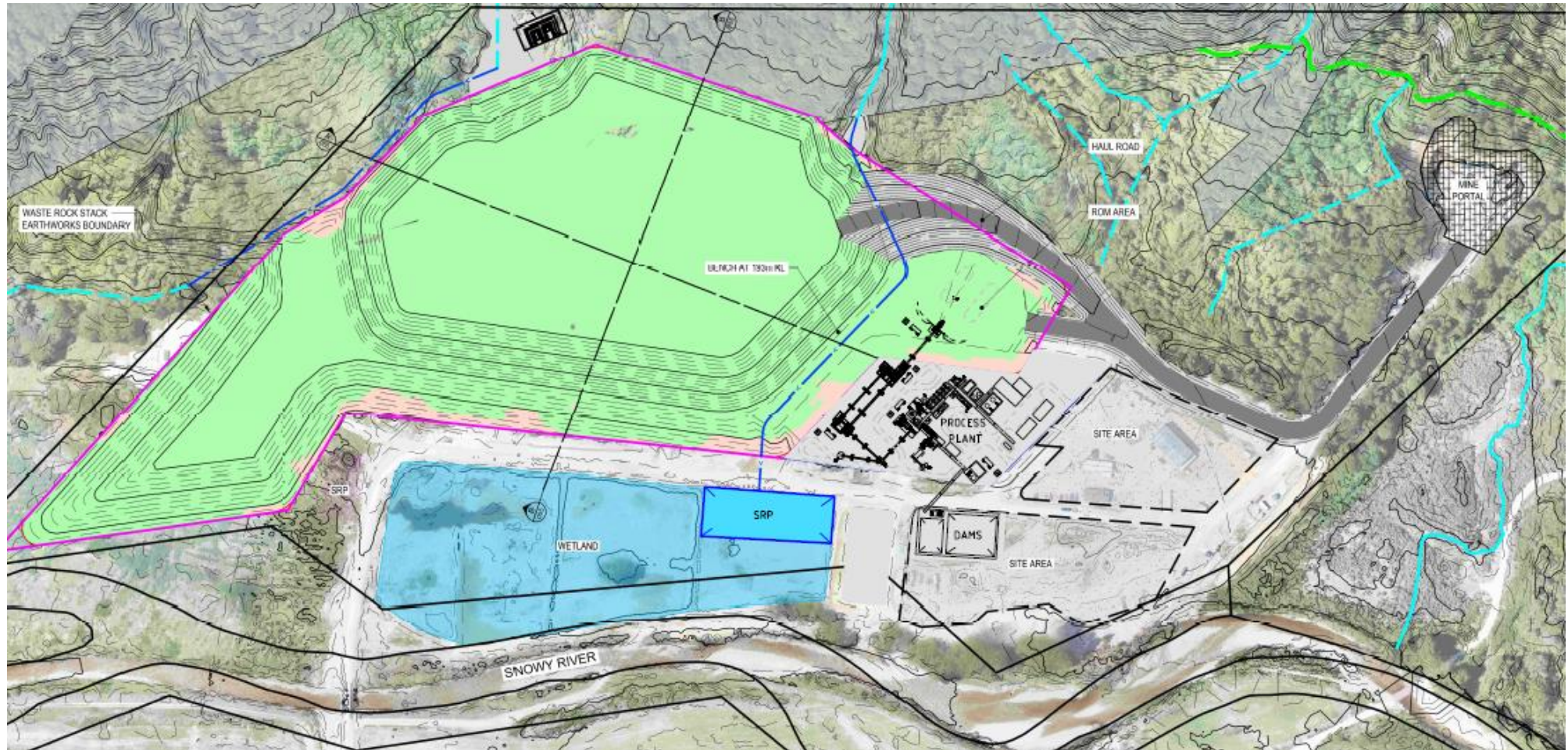
# New or Varied Resource Consents

- Processing facility is outside the scope of the existing consents.
- Waste Rock Stack consented, but potentially not the nature of the material resulting from changes arising from the processing onsite.
- New land use consent from Buller District Council.
- Water management – depending on final design and water quality parameters new or varied consents may be required.
- Reduction in heavy vehicle traffic on local roads and State Highway.





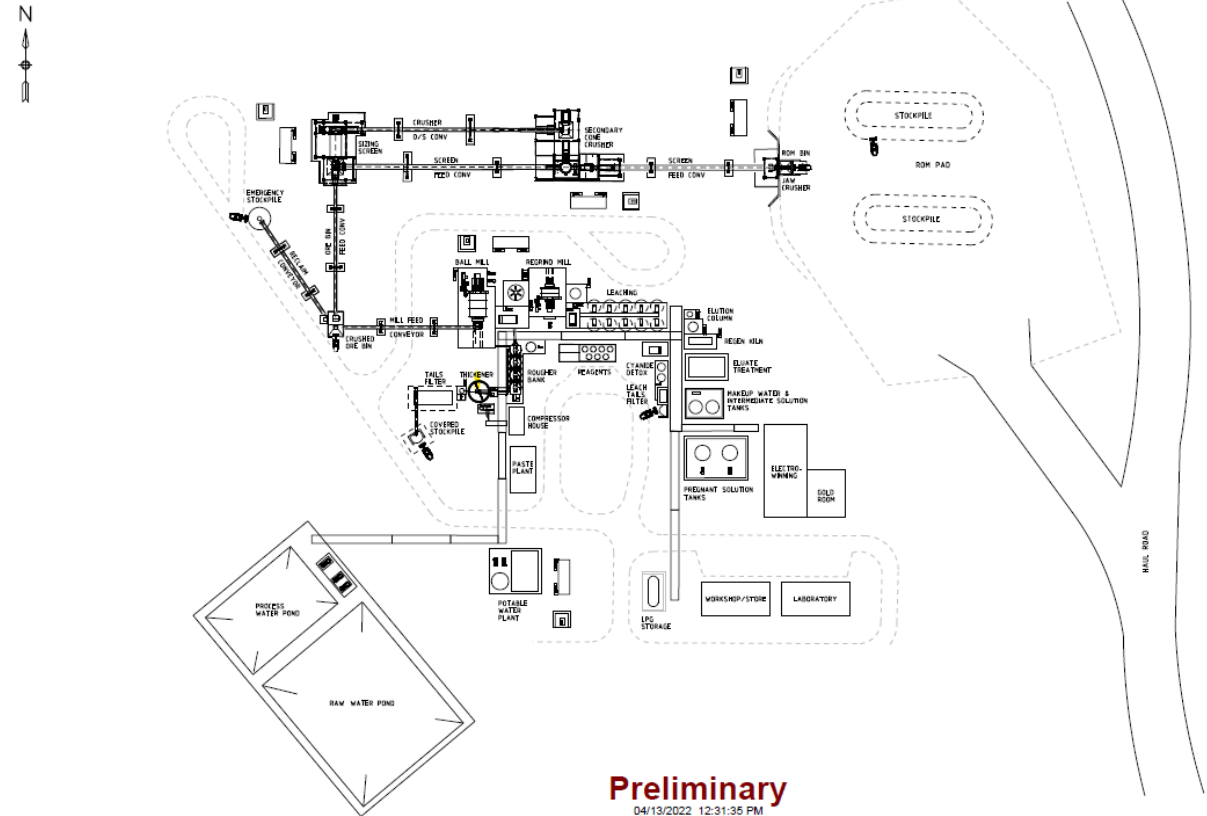
# Snowy River Mine



Site lay out and proposed processing plant

# Processing Overview

- Scoping study completed by Mintrex.
- Throughput 300,000 tonnes per year with 95% recovery.
- Contained and modular plant will occupy 10,000 m2 of land already disturbed.
- Plant construction time estimated at 9 months with commissioning in late 2024.
- Gravity circuit, floatation, cyanidation of float concentrate with full destruct system.
- 50% of waste to be placed on surface lined waste rock stack and remainder underground in form of paste fill.
- All water runoff from surface waste rock stack to be captured and treated in mechanical treatment plant and ponds.



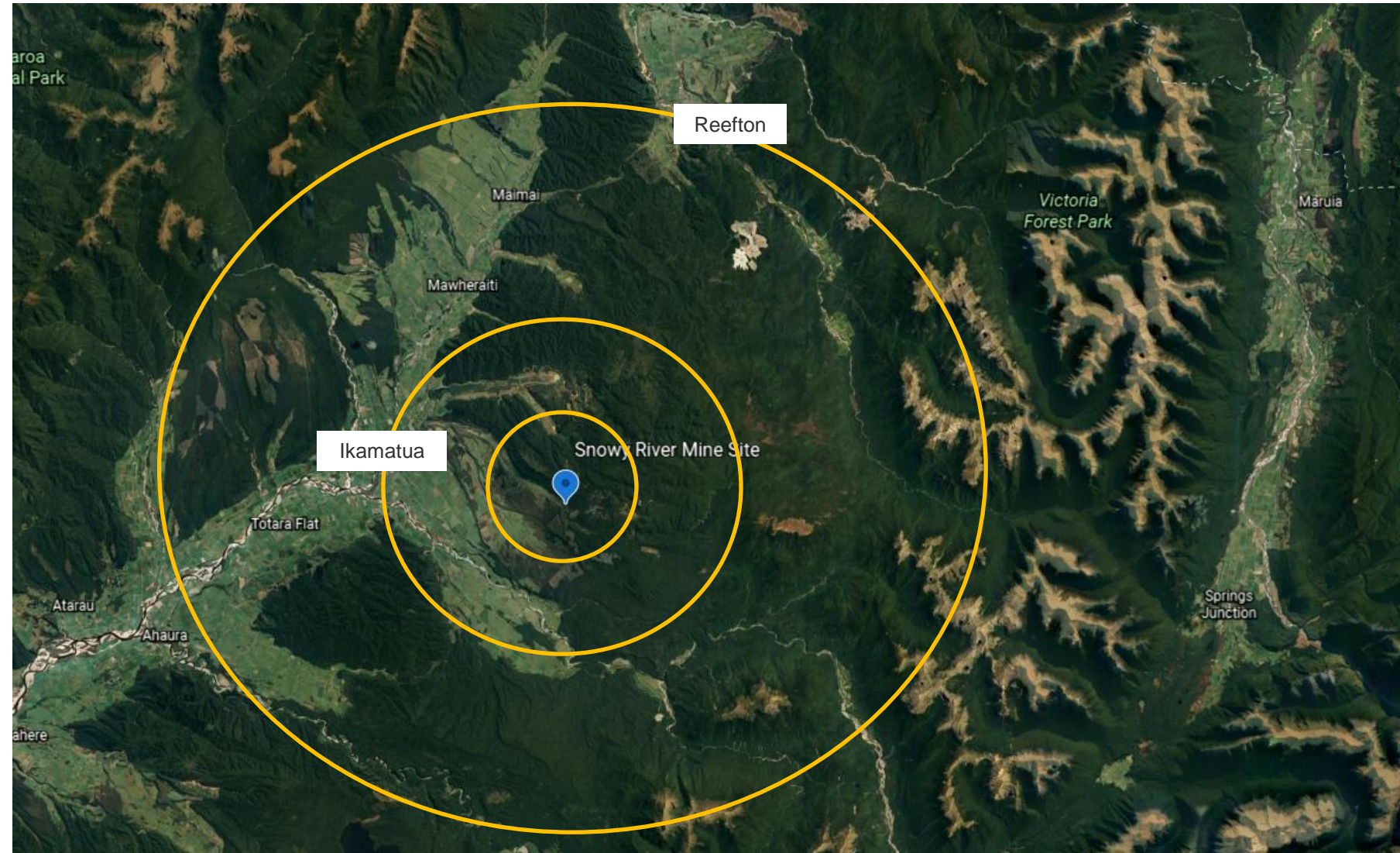


# Stakeholder Engagement

We have identified over 1,200 stakeholders for our Snowy River Mine these are made up of

- Iwi
- Local Community & landholders
- West Coast Regional Council
- Buller District Council
- OceanaGold
- New Zealand Government
- Australian Super
- Dept of Conservation
- Transport NZ
- Heritage NZ
- Fish & Game NZ
- WorkSafe NZ
- NZ Petroleum and Minerals
- Our Suppliers and contractors
- Local Community Groups

Consultation is undertaken through a blend of face to face meetings, electronic communications, our website, newsletters, noticeboards and social media



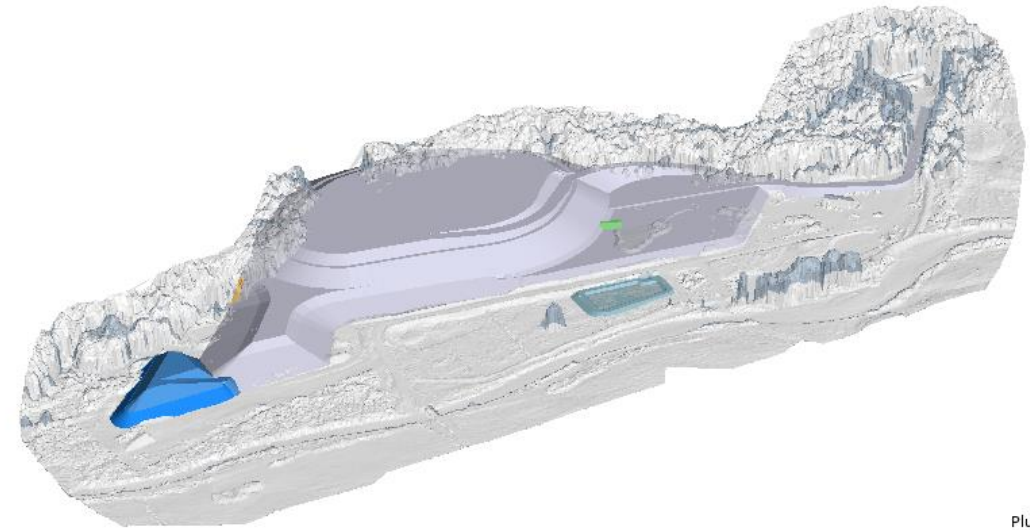
# Technical Reports



	Organisation	Principle Consultant	Status
Waste Rock Stack	PDP	Luke Matheson – Engineering Geologist	Complete
Noise and potential vibration effects	Tonkin & Taylor	Darran Humpheson – Consultant	Complete
Landscape and visual effects	Frank Boffa	Frank Boffa – Landscape Architecture	Complete
Terrestrial & aquatic ecology effects	Ryder Consulting	Greg Ryder – Environmental Scientist	Drafting
Ground disturbance and containment treatment – including geochemistry	Mine Waste Management	Dr Paul Weber - Environmental Scientist	Complete
Long term water management strategy	PDP	Dr Mark Ellis – Environmental Engineer	Complete
Assessment of air discharges	PDP	Jeff Bluett – Consulting Engineer	Complete
Transport and traffic assessment	Stantec	Chris Rossiter – Transport Engineer	Complete
Archaeology and historic heritage	Origin Consultants	Jamie Grant – Archaeologist	Complete

# Waste Rock Stack

- Designed by PDP Geotechnical team.
- 600 mm compacted clay liner to protect ground water.
- Overall height <50 metres.
- Final slopes <26 degrees.
- Drainage reporting to sediment collection points.
- Clean water diversion of existing water courses.
- Design is built on 7 previous geotechnical investigations.
- Capacity moved to 1.4 million cubic tonnes of waste.
- Internal cells designed to capture low sulphur processing waste above.
- Progressive rehabilitation of walls.



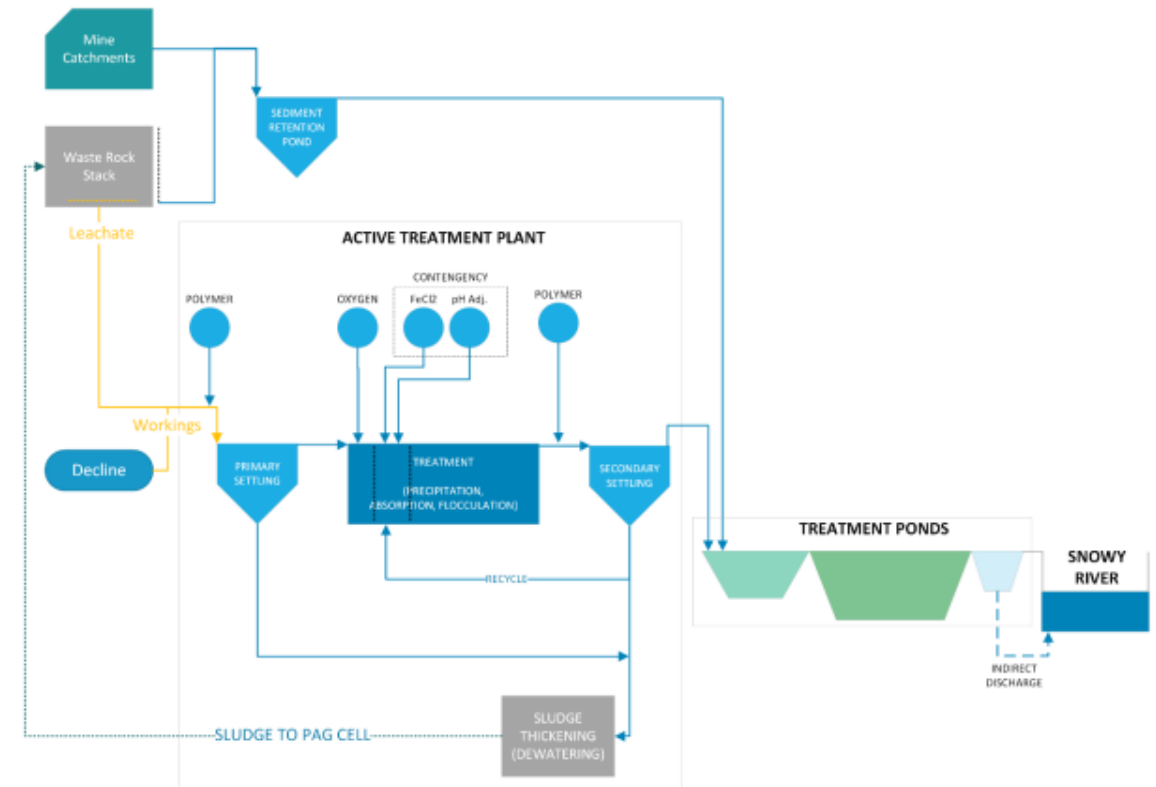
Plunge +27  
Azimuth 075





# Environment Aspects - Water

- A series of technical reports have been commissioned on water management.
- Water is currently treated in a series of settling ponds and passes through an oil water separator.
- We are currently installing a liner on the Waste Rock Stack.
- An active water treatment plant will be installed during 2023.
- Treated and captured water will be recycled for operational use.
- Processing chemicals will be stored and used in line with best practice.
- Federation undertakes water monitoring onsite and offsite in the Snowy River.



# Environment Aspects

## Dust

- A technical report has reviewed potential dust impacts from processing.
- Minimise risk and manage any potential nuisance dust through monitoring and suppression sprays.

## Traffic

- A technical report has reviewed potential traffic impacts from site processing.
- Overall traffic volumes will be less than previously anticipated and accounted for in existing Resource Consent.
- Federation has undertaken upgrades on the Snowy River Road and will work with Buller Council on further enhancements in the future.



# Environment Aspects

## Noise

- A technical report has reviewed potential noise impacts from site processing. The report found minimal increase on existing noise levels.

## Heritage

- A technical report has reviewed any new potential impacts from site processing & there are no material changes from the existing consents.

## Landscape

- A technical reports has reviewed any new potential impacts from site processing.
- Key management strategy is screening with plants and final land form design for WRS.

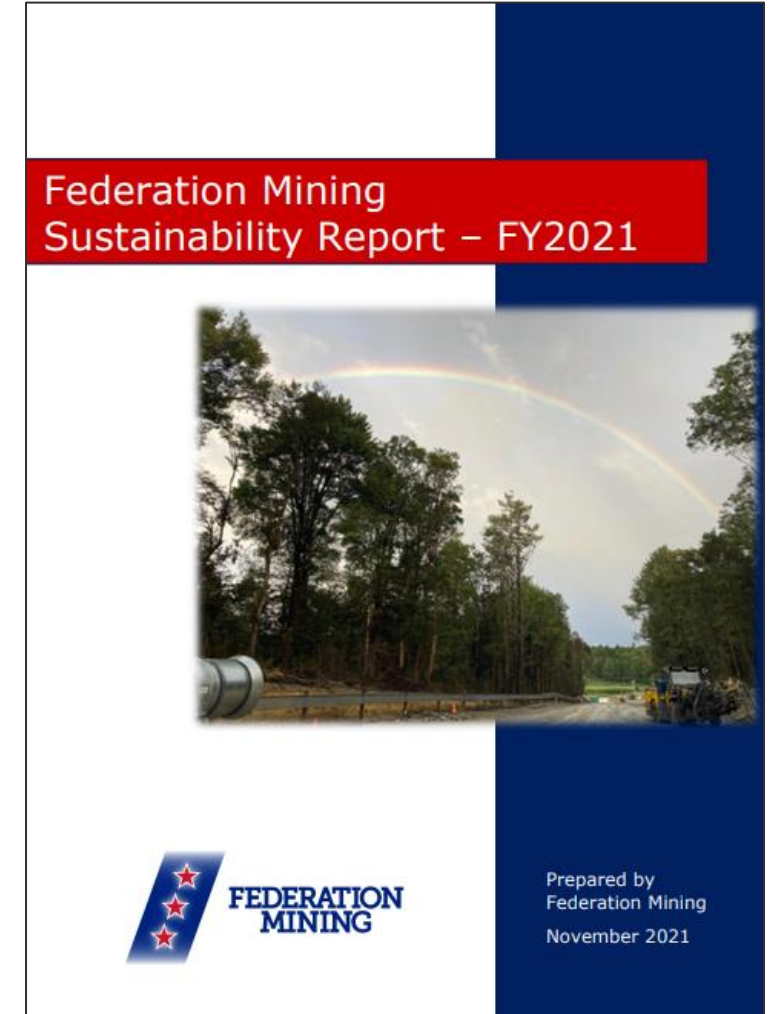




# Sustainability



- Strong organizational focus on ESG – Environment, Social and Governance
- Modern responsible mining organisation
- Sustainability report released late 2021
- Community partnership and engagement
- Protection of the environment
- Health and Safety
- Green house gas emission tracking
- Progressive rehabilitation and offset strategy
- Corporate policies and governance



# Economic Investment

- Strong contribution to the New Zealand Regional economy with over \$27 million dollars (NZ) spent across over 230 local NZ businesses and service providers in last 12 months.
- Over \$9 million dollars (NZ) in the West Coast region during the same period.
- Planned Processing plant engineering, design and construction over NZ\$60 million.
- Over 110 direct employees during production phase (2024).
- Mine life expected to be over 10 years.



# Stay Up To Date



## Contact Federation Mining

Community Contact Line +64 3 732 7028

Website [www.federationmining.com.au](http://www.federationmining.com.au)

Email [info@federationmining.com.au](mailto:info@federationmining.com.au)

LinkedIn [www.linkedin.com/company/federationmining](http://www.linkedin.com/company/federationmining)

## Monthly Business Update

We can email directly to you or reviewed on our website, please advise our staff or send us an email

## For More Information

### Federation Mining (Sydney)

Simon Delander +61 2 8330 6785

## Media Contact

Michael Vaughan, Fivemark Partners  
+61 422 602 720