

Snowy River Project Update

Federation Mining is pleased to provide an update on our progress with the development of the Snowy River Gold Mine (the Project) near Reefton on the South Island in New Zealand.

Our Project

Decline development work continued with the crews advancing 356 metres without any recordable injuries. The team have now completed over 4000 metres across both declines.

Our People

The Snowy River mine project currently has 46 employees and contractors working on site.

During the month the site team hosted visits from members of our Sydney office who were in New Zealand meeting with key stakeholders and catching up on development progress onsite.

Snowy River has the below vacancies:

- Underground Shift Supervisor (must hold current A or B Grade Tunnel Manager qualification)
- Tunnel Operator

To apply for these roles, or for more information, please email recruitment@federationmining.com.au

Safety & COVID-19 Management

Site continues to work under the site COVID Management Plan and has had some impacts from COVID during the month which have been managed to minimise disruption.

Decline Development

Work continued in both Declines and our next cross-cut. We developed a total of 356.1 metres for the month of April. Development was broken down as below:

- Main Decline – 166.8 metres
- North Decline – 160.4 metres
- Ancillary – 28.9 metres

Project to date our team have completed a total of 4108 metres of development.

Community

The Managing Director and Vice President were in New Zealand doing a stakeholder engagement road show last month with important meetings with Iwi, the Regional and District Council and other stakeholders.

The team is hosting a community meeting in Reefton on the 3rd of May at 6:30pm which will provide an update on our progress and the Resource Consent amendment for processing.

If you would like to receive this email and any other correspondence, including updates to our community meeting, please email info@federationmining.com.au and we will add you to the list. The Snowy River Mine Community contact & complaints line is +64 3 732 7028.

Environment

Federation has a strong commitment to the environment in which we operate. This month, the team started to plant native trees around the Snowy River site as part of our plan to progressively rehabilitate the site.

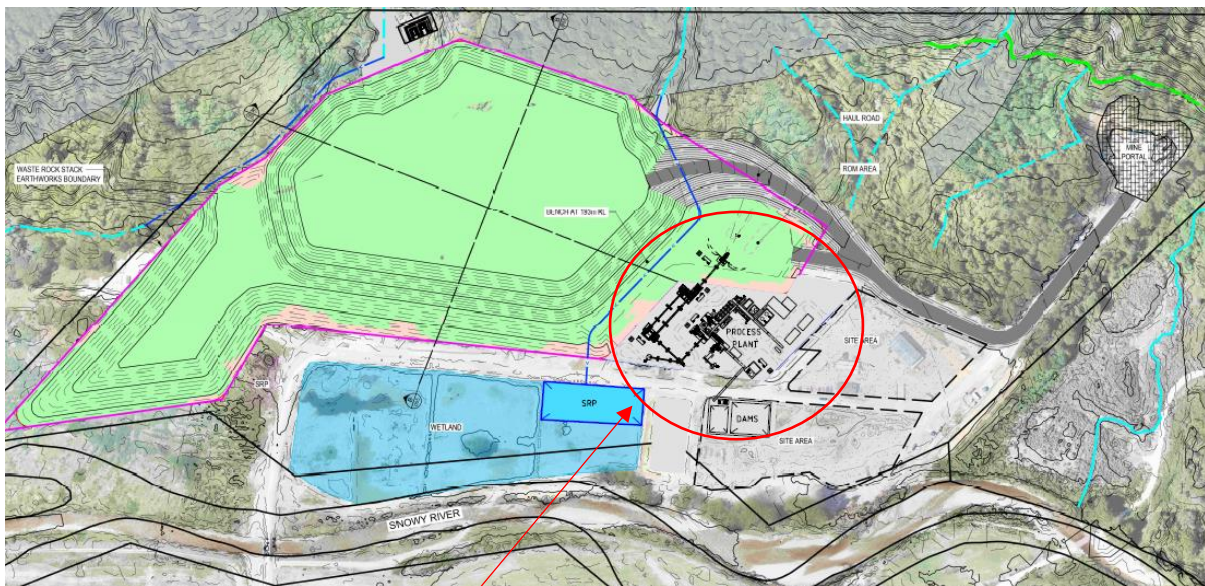
We continue to support the [Trees That Count](#) initiative on West Coast and have funded the planting of 300 trees in and around the West Coast region, in addition to those planted onsite at Snowy River. This will account for the offsetting of 68 tonnes of CO2 over the tree's life cycle.

We completed all environmental monitoring in accordance with our current Resource Consent Conditions.

Project Development

A suite of technical reports have been prepared by our Resource Consent team covering design of Waste Rock Stack, geo chemistry, water management, ecology, traffic, noise, dust and air emissions, heritage and landscape. These technical reports will form part of the Assessment of Environmental Effects (AEE) which has now been drafted.

Consultation with various key stakeholders continues with a series of meetings and discussions held with a broad range of interested parties during the month.



Location of proposed processing plant at Snowy River

Site Photos and additional information



Underground operator Jacob with our Epiroc Loader



Services installation in the decline



Jumbo operations in the main decline



Project Geologist Don assisting with site tree planting

Contact Federation Mining

Website www.federationmining.com.au
Email info@federationmining.com.au
LinkedIn www.linkedin.com/company/federationmining

For more information, please contact:

Federation Mining

Simon Delander
+61 2 8330 6785

Media Contact

Michael Vaughan, Fivemark Partners
+61 422 602 720

About Federation Mining

Federation Mining is an Australian incorporated company established by Mark Le Messurier and Jim Askew to build a new gold mining company. Federation will pursue opportunities where it is able to apply its expertise and experience in the development and management of mining projects across a range of regions with a strong focus on Sustainability.