

Federation Mining Sustainability Report – FY2021



**FEDERATION
MINING**

Prepared by
Federation Mining
November 2021

Table of Contents

Managing Directors Introduction.....	3
Our Story.....	5
<ul style="list-style-type: none"> • Federation Mining • Board of Directors • Chair Profile • Managing Director Profile • Independent Director Profile • Tasman Mining • Management • Values • Sustainability • Corporate Governance 	
Our Performance.....	12
Our People.....	14
<ul style="list-style-type: none"> • Health and Safety • Training & Development • Employee Statistics • COVID-19 	
Our Community.....	17
<ul style="list-style-type: none"> • Stakeholder Engagement • Cultural Heritage • Economic Investment • Community Support 	
Our Environment.....	20
<ul style="list-style-type: none"> • Climate Change • Emissions Profile • Water • Land • Air 	
Our Future.....	23
Contact Us.....	24

Managing Directors Introduction

Federation Mining is at the start of our lifecycle as an organisation. Sustainability encompasses safety, environmental management, planning, and investing in partnership with stakeholders. Federation Mining has made a commitment to these ideals with the ambition of being a leader in sustainable mining and leaving a strong and positive legacy. We want to establish a culture of transparency with our stakeholders and the release of our inaugural Sustainability Report is an important step in our journey as a modern responsible mining company.

The last year was successful for Federation Mining. The company secured funding for the Snowy River project in New Zealand and the team established the site and have completed 2.5 kilometres of underground development. At the same time and in cooperation with our investors and business partners we established the framework to be a modern responsible mining company and an important and valued entity within the community. This entails developing our culture and embedding our values while implementing procedures and practices that support the safe and responsible management of the business and helps us build enduring relationships.

In 2018, Federation Mining signed an exclusive Project Deed with OceanaGold for the development and purchase of the Blackwater mine (name now changed to Snowy River) and associated tenements, which provides for Federation to develop a twin decline and the drilling of the Blackwater resource beneath the historic workings. At the completion of this decline development work scheduled for 2023, Federation will purchase the asset and move to production in 2024 subject receipt of all necessary consents and approvals.

A land access agreement is in place with the landowners on which the Snowy River project surface infrastructure is situated, as well as a loan agreement with Crown Holdings (previously known as NZ Provincial Growth Fund), one of our principal investors, and investment arrangements with Australian Super, our other major partner. We acknowledge our relationship with Ngai Tahu, who we engage with regularly and continue to be involved in our project.

Under the Deed and with the support of seed funding from OceanaGold, Federation Mining completed funding for the project and began surface construction in September 2020. The development was allowed by virtue of the Resource Consents secured by OceanaGold from the Buller and West Coast Regional Councils in 2014.

The planning for the project incorporated long term water management for the site which took into consideration environmental data collected over the previous 18 months and expertise provided by independent engineering firms. Extensive monitoring continues and in 2022 Federation will submit an application to the Councils for an amendment to the Resource Consents to provide for future ore processing on site.

The company currently employs 46 people at the Snowy River site which includes an experienced management team that provides oversight of the operational activities, our workforce will grow to 100 when we move into production. Our key responsibilities revolve around safe operations, environmental management and engagement with our local community and neighbours.

People living nearby are regularly informed on our progress and consulted with so that their concerns or questions can be raised with our management team. Federation also has a focus and intent on investment and spending in the region and community, during the last year we spent over NZ\$6.3 million on the West Coast.

The management of safety is of primary importance for Federation. NZ WorkSafe has regularly inspected the operation and provided instruction and direction to improve mining practices. Independent audits by consultants are completed. Importantly, Federation has appointed

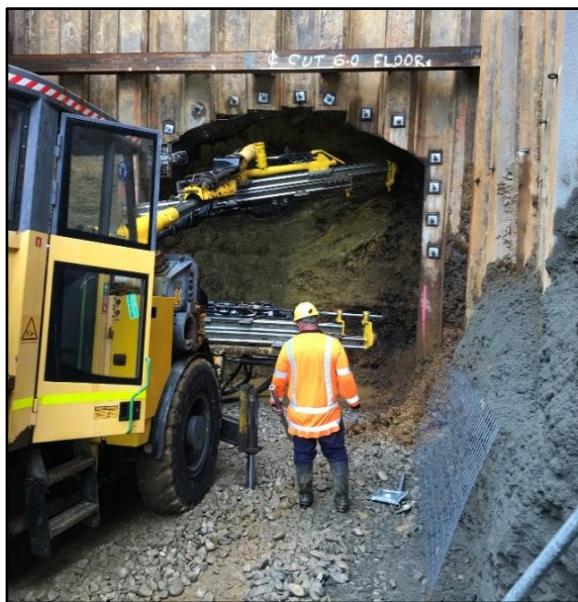
experienced mining managers and operators and established processes and controls to manage the operational risks. Modern mining practices and equipment are deployed and maintained. Training for mine operators is regularly conducted including emergency practices.

I thank you for your interest in Federation Mining and look forward to sharing our journey with you and our many other stakeholders.

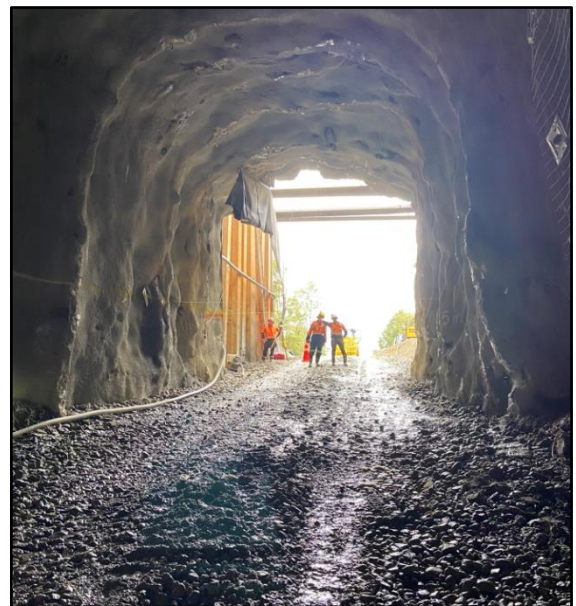
Mark Le Messurier | Managing Director



Early construction works on the Main Portal - November 2020



First cuts in the Main Portal - December 2020



Main Portal - January 2021

Our Story

Federation Mining

Federation is an Australian incorporated unlisted public company with a gold development project in New Zealand. The company has high quality investors Australian Super and Crown Holdings (New Zealand Government agency).

The Snowy River Mine site is located on the South Island of New Zealand approximately 30 kilometres from the township of Reefton and 10 kilometres from the township of Ikamatua.



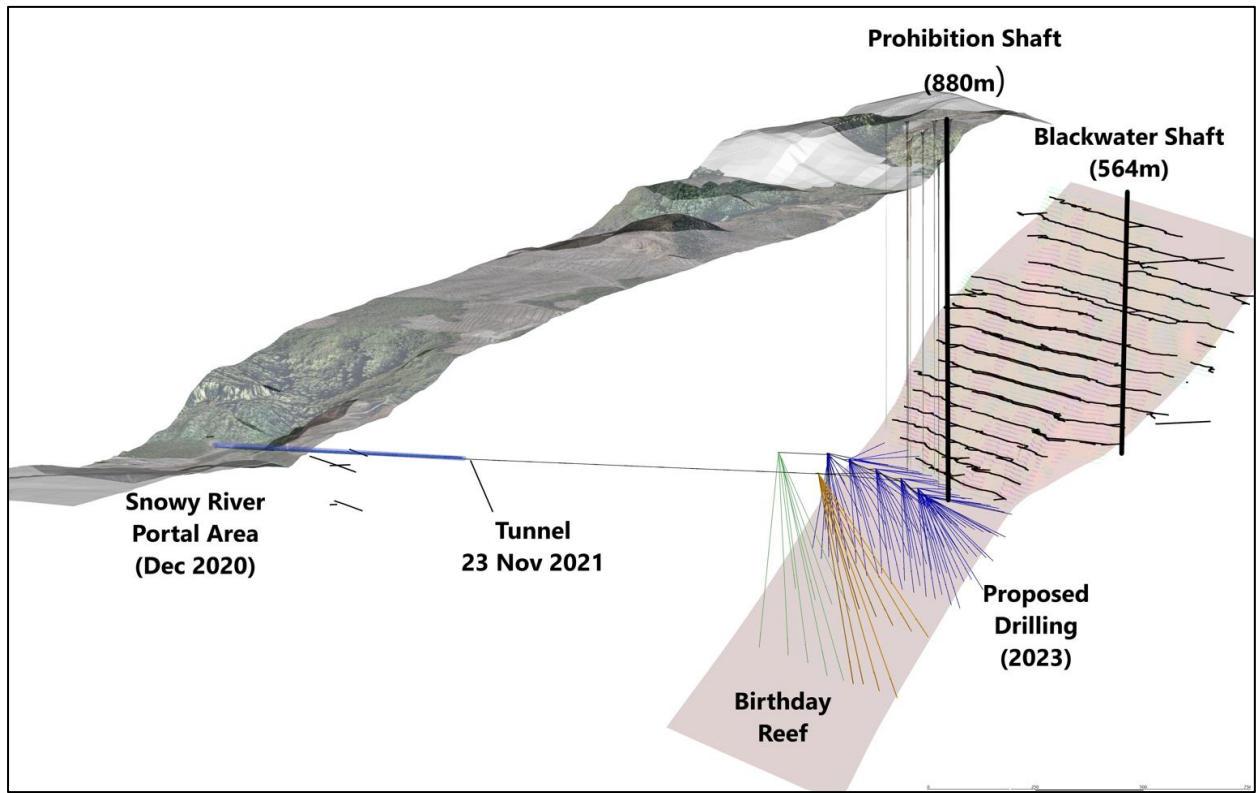
The Snowy River Mine is operated by Tasman Mining Limited, a wholly owned subsidiary of Federation Mining (Australia). The mining permit and operation is owned by OceanaGold and the current Resource Consent is in the name of OceanaGold.

Federation entered into a Deed of Agreement with OceanaGold for the development of the Snowy River Mine including:

- The establishment of site surface infrastructure (2020)
- Construction and development of twin tunnels and drill platforms (2020-2023)
- Completion of resource drilling and a feasibility study (2023-2024)

Federation's strategic scope for the Snowy River Mine project is:

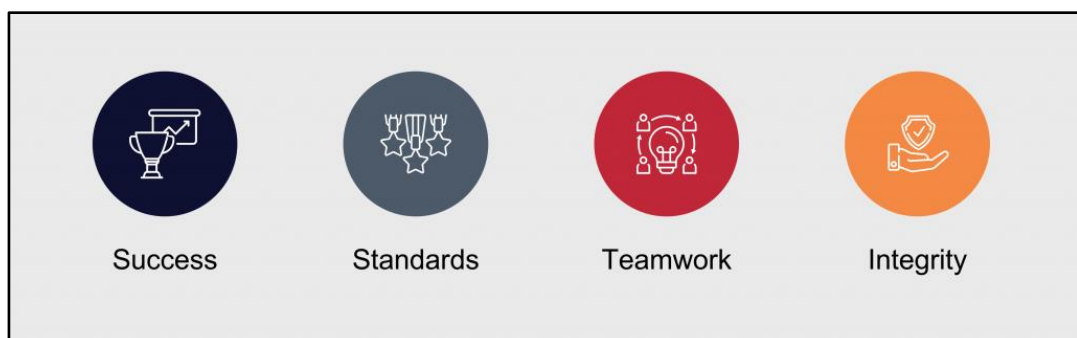
- Deliver a safe modern underground narrow vein gold operation that produces around 65-70koz/ annum for a minimum 10 year mine life
- Generate significant local employment over the next 10+ years
- Minimal impact to land with small surface infrastructure footprint for processing plant
- Water management program prioritises the use of recycled water and storm water capture for operational usage
- Support the regional economy and seek partnerships with New Zealand based businesses



Overview of twin decline and proposed drill drives to explore the Birthday Reef under the historical Waiuta mining precinct

Values

Federation developed our values through a collaborative and consultative process between the Senior Management Team and representatives from our project team. The Senior Management Team has presented the values to the workforce through a series of team meetings this year.



Board of Directors

Federation headquarters is in Sydney with an experienced Senior Management Team and Board of Directors.

The Federation Mining Board comprises of 5 members:

- Jim Askew - Chairperson
- Mark Le Messurier – Managing Director
- Luke Smith - Australian Super nominee Director
- Romina Gaudion - Australian Super nominee Director
- Bob Vassie - Independent Director

The Board of Directors meets regularly and has several sub committees including:

- Risk & Sustainability
- Audit & Remuneration

The Board and sub committees meet in accordance with the meeting schedule and all formal sessions are documented by the Company Secretary and signed by the Chairperson.

Chair Profile



Jim Askew is the chair of Federation and has been involved with the Blackwater (now known as Snowy River) project since 1986.

Jim has a unique and deep understanding of the New Zealand mining industry and government serving on the OceanaGold Board for a period of over 12 years. During his tenure as Chairperson, he oversaw the operations of the Macraes Mine on the South Island, the Waihi Mine on the North Island and the successful closure and restoration of the Globe progress operation near Reefton on the West Coast.

Mr. Askew is also presently on the Boards of Evolution Mining (ASX), Endeavour Mining (LSE) and Syrah Resources (ASX).

Managing Director Profile

	<p>Mark is a mining engineer with 35 years of experience in hard rock base metal and precious metal mining. He served as the Chief Operating Officer of Evolution Mining for seven years, a leading Australian gold miner, prior to establishing Federation with Jim Askew in 2018.</p> <p>Mark has had significant success driving the rapid growth of mining projects and operations with a strong focus on driving operational excellence.</p> <p>Mark holds a degree in Mining Engineering, an MBA, and is a member of the Australian Institute of Company Directors.</p> <p>Mr Le Messurier has worked at Evolution (ASX), Sinogold (ASX), Barrick (NYSE), Western Mining (ASX), and Rio Tinto (ASX).</p>
-----------------------------------------------------------------------------------	----------------------------------------------------------------------------------------------------------------------------------------------------------------------------------------------------------------------------------------------------------------------------------------------------------------------------------------------------------------------------------------------------------------------------------------------------------------------------------------------------------------------------------------------------------------------------------------------------------------------------------------------------------------------------------------------------------------

Independent Director profile

	<p>Independent Director Bob Vassie is a New Zealand citizen and a mining engineer with 35 years multi-commodity and international experience. Bob spent 18 years with Rio Tinto (ASX) in global mining and resource development executive roles followed by MD & CEO positions in Ivanhoe Australia and St Barbara Ltd (ASX) with a focus on executive leadership, resource development and business development including M&A.</p> <p>Bob served as a board member for the Minerals Council of Australia from 2014 to 2020 where he chaired the MCA Gold Forum and currently serves on the AusIMM Council for Diversity and Inclusion. Mr Vassie recently retired from the role of Managing Director and CEO of St Barbara Ltd.</p> <p>Mr. Vassie is also presently on the Boards of Aurelia Metals (ASX) and the Chair of Ramelius Resources (ASX).</p>
-------------------------------------------------------------------------------------	-------------------------------------------------------------------------------------------------------------------------------------------------------------------------------------------------------------------------------------------------------------------------------------------------------------------------------------------------------------------------------------------------------------------------------------------------------------------------------------------------------------------------------------------------------------------------------------------------------------------------------------------------------------------------------------------------------------------------------------------------------------------------------------------------------------------------------------------------------------------

Tasman Mining

Our New Zealand subsidiary, Tasman Mining is wholly owned by Federation and operates a small Board in accordance with New Zealand corporation's law.

The Tasman Mining Board comprises of 2 board members:

- Mark Le Messurier – Managing Director
- Mark Cadzow - Director

Management

The Senior Management Team comprises of:

- Mark Le Messurier – Managing Director
- Simon Delander – Vice President
- Bruce Higson-Smith – Vice President
- Kerry Angel – CFO & Company Secretary
- Lincoln Smith – General Manager – Operations, Snowy River Mine

Sustainability

The objective of our Sustainability efforts is to deliver value to our stakeholders over the long term through safe, environmentally responsible and socially respectful operations.

Our approach to Sustainability is embedded in our decision making at all levels of the organisation and is underpinned by our Sustainability objectives. Federation has a Sustainability policy in place which is reviewed annually.

OUR SUSTAINABLE FUTURE



Demonstrate good corporate governance and comply with local laws and regulations



Engage and foster positive, constructive relationships with our stakeholders



Implement effective management systems and risk assurance processes



Foster a safe, diverse and inclusive workplace



Implement and maintain sound risk management processes



Identify and actively manage climate change impacts, both in terms of physical and transition risks present in our operations



Demonstrate high standards of environmental and resource stewardship



Foster positive partnerships with our local and regional communities and suppliers



Actively manage our supply chains and ethically procure all goods and services



Protect cultural heritage and actively engage with indigenous & traditional owner groups



Operate at the highest standards of financial and ethical behaviour



Respect the human rights of all our stakeholders

Corporate Governance

Federation has developed a Corporate Governance policy framework which has been endorsed by our Board, authorised by our Managing Director and is subject to annual review. All Corporate policies are available on the company website and are communicated to our employees and contract partners.

- Code of Conduct
- Anti-Bribery & Anti-Corruption Policy
- Diversity & Inclusion Policy
- Remuneration Policy
- Tax Compliance Policy
- Cyber Security Policy
- Risk Management Policy
- Sustainability Policy
- Whistleblower Policy
- Modern Slavery Standard
- Cultural Heritage Policy
- Data Privacy Policy

Code of Conduct

- Federation has a Code of Conduct which is closely linked to our values and outlines the standards of behaviour and conduct that are expected of all our people and contract partners.
- The Code of Conduct is linked to all corporate policies and is provided to our people for sign off and acknowledgement upon commencement of employment and when changes are made to the Code.

Anti-Bribery & Anti-Corruption Policy

- Federation is committed to complying with the laws and regulations of the countries within which it operates and ensuring that all business is conducted ethically and in accordance with its values. There is a policy position which has been created to provide clarity to all personnel on these expectations.

Diversity and Inclusion Policy

- Diversity and Inclusion at Federation is about our commitment to equality and the treatment of all individuals with respect.
- Federation is dedicated to growing an inclusive and diverse workforce, aligned with the company's values, where every employee is treated fairly, feels respected and where they are able to contribute to business success and realise their full potential.

Remuneration Policy

- To ensure that Federation employees are appropriately remunerated and aware of the terms and conditions under which they are employed a policy position has been developed which includes the requirement for oversight of Executive remuneration by the Board of Directors.
- All employment agreements will comply with the regulatory and employment frameworks in each jurisdiction we operate within.

Tax Compliance Policy

- Federation is committed to complying with the laws and regulations of the countries in which it operates, ensuring all business taxation requirements are met.
- The financial accounts are subject to annual audit and provided to Board of Directors, Crown Holdings and Australian Super.

Cyber Security Policy

- Effective protection of business information and systems is critical, both in the ability to preserve the reputation of Federation and in reducing the risk of the occurrence of negative events and incidents.

Risk Management Policy

- Federation has established and will maintain a risk management framework across the business that supports AS/NZS ISO 31000 :2019 Risk Management Principles and Guidelines and legislative compliance.
- During the year, Management completed a review of strategy business risk for the Company and duly considered industry information from the KPMG 2021 Global Mining Risk survey and Australian Institute of Company Directors.
- The Snowy River Project has a risk register in place which is subject to regular review and update, these reviews involved site and head office personnel.

Whistleblower Policy

- Federation is committed to creating and maintaining a positive and collaborative work environment, free of unethical, unlawful, improper or undesirable conduct or practices.
- The Company has established a Whistleblower policy and a hotline which has been communicated to the team. The Board has oversight for any matter referred to the hotline which is managed by an independent third party.

Modern Slavery Standard

- Federation acknowledges human rights as a fundamental principle to which every human being is inherently entitled regardless of their personal, social, economic, cultural, or geographic circumstances.
- Federation recognises our role in protecting the human rights of all people involved in, or impacted by, our business practices and preventing human rights breaches, including instances of modern slavery through the development of a Modern Slavery Statement and Supplier Code of Conduct.

Cultural Heritage Policy

- Federation has developed a policy framework which is designed to ensure the respect and protection of the cultural heritage associated within areas of operation.

Data Privacy Policy

- Federation Mining respects the right to privacy and is committed to safeguarding the privacy of our people, contract partners and website visitors.
- The Company adheres to the Australian Privacy Principles contained in the Privacy Act 1988 (Cth) and the regulations relating to Privacy in any other jurisdiction operated within.

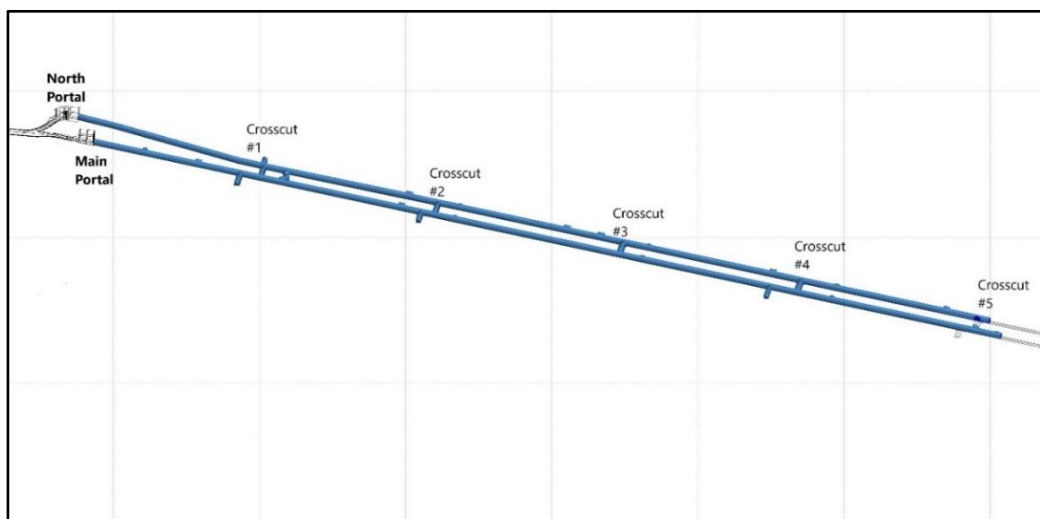
Our Performance

During the year Federation completed surface construction on the Snowy River site, building roads, a bridge, a workshop, offices and changerooms, mains power and distribution systems, sewage and water supply, fuel tank, water treatment ponds and excavations for a twin portal area.

A local workforce was recruited and trained with development works commencing on the Main Decline in December of 2020 and the North Decline commencing in February 2021.



To date, over 2500m of decline development has been completed. This includes the Main and North Declines, auxiliary developments including a series of cross cuts between the Declines. We have undertaken some exploration activities in accordance with our permit conditions and have planned more programs for the year ahead.



Overview lay out of twin declines – Mid November 2021

During the last financial year our Sustainability performance recorded:

- Zero lost time injuries
- One medical treatment injury
- Zero significant environmental incidents
- Five community concerns raised with the site team

We continue to focus on preventing injuries and enhancing our Health, Safety, Environmental and Community programs.

There is currently an environmental bond in place with West Coast Regional Council and Buller District Council. Federation has lodged a works and restoration plan with the council in line with our Resource Consent.

In early 2021, our Project Manager Nigel Slonker transitioned out of his full-time role and has continued to support the project throughout the year. Steven Wilson was appointed the Site General Manager and assisted in transitioning our development rates to a steady state before handing over to Lincoln Smith from New Zealand Mine services company Terra Firma who has been contracted to manage the completion of the twin declines and drilling program.



Our new Epiroc ST18 Loader commissioned and supported by Epiroc and First break Mining



Crews with one of the Epiroc M2D Jumbos

Our People

Federation has a multi skilled and diverse workforce of 52 comprising of 39 employees and 13 contractors working in New Zealand, Australia and the USA.

In New Zealand we recruited, established, and trained a workforce from a single Project Manager role to the project team of 46 today. The project team has completed a range of training on our mobile equipment, our operating procedures, safety equipment and processes.

All employment agreements comply with the regulatory and employment frameworks in each jurisdiction we operate within. Our New Zealand based employees are offered Private Health insurance (including dental and optical) and all staff including family members have access to a free and confidential EAP service (Employee Assistance Program).

Health and Safety

Federation is committed to high standards of health and safety with the protection of our people critical to our success as a modern sustainable mining company.

Federation has implemented strong safety and health management systems and controls to assist in the management of Mining Principle Hazards.

There is a fitness for work program in place and regular emergency preparedness drills are conducted onsite.

Federation has appointed Health and Safety representatives who are key in driving site-based programs and improvements.

Safety & Health arrangements are subjected to regular review, inspection, and audit internally and by independent third-party auditors.



Safety Training Exercise - 2021

During the year the site was subject to an external Health, Safety & Environmental audit, an action plan was developed to address the opportunities for improvement identified. The audit and action plan were reviewed by the Management team and provided to WorkSafe NZ.

Federation will strive to improve our safety and health performance and share our progress with our people and our stakeholders.

Training and Development

Federation encourages professional development, and this focus has seen a number of staff members progress into different roles as they developed their skills and knowledge of our operations.

During 2021, four of our crew began the training for the B Grade Supervisors Course with the assistance of the team at New Zealand Mines Rescue. The crew undertook the course, which is ordinarily 18 months long, over six intense weeks. Crews have now completed all the theory and

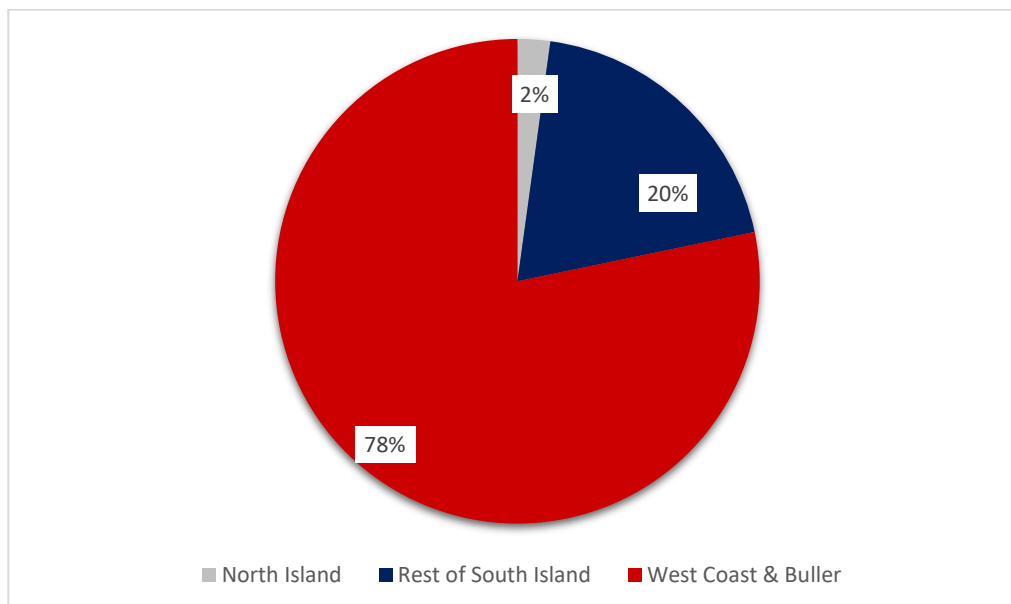
practical components and await a date from the Board of Examiners to finalise their qualification. Thank you to all involved, including New Zealand Mines Rescue and Development West Coast, in conjunction with Ministry of Business, Innovation and Employment.



Safety Training Course at Snowy River - 2021

Employment statistics

The Snowy River mine site directly employs 35 employees with a diversity split of 20% female and 80% male with almost 80% of our workforce residing in the West Coast/Buller region of New Zealand.



Snowy River Employee Statistics – November 2021

Five of our staff members recently passed their 12 months service anniversary, these team members were part of the early works project team and are working in technical and support roles assisting with our decline development.



Early Works Team – October 2020

COVID 19

Federation along with most other businesses was impacted by the COVID 19 pandemic with affects to our operations including:

- Stay at home orders scaling back our operations onsite for a period of two weeks
- Stay at home orders in Australia preventing the head office team travelling to New Zealand and accessing the corporate office
- Significant shipping delays for essential supplies and equipment transiting into and around New Zealand across the whole year
- The extended Auckland and surrounding area high alert level status has impacted movement for some of our people and contract partners and slowed freight movement
- The Australian Management team has only had an 8-week window to travel to New Zealand in the last 12 months under the Trans-Tasman Travel Bubble program

Federation has a COVID-19 Safety plan in place and will continue to follow Government advice and directions to keep our people and community safe.

Our Community

Federation values our social license to operate and understand the importance of working closely with our stakeholders and the communities which we operate within.

The Company seeks to engage and foster positive, constructive relationships with our stakeholders through regular engagement and sharing of information.

Federation will seek to partner with local business and prioritise the hiring of local people to support the regional economies.

Stakeholder Engagement

The West Coast is a region of New Zealand on the west coast of the South Island that is administered by the West Coast Regional Council and has a population of over 30,000 people.

Within the West Coast region, there are 3 District Councils including Buller District, Grey District and Westland District. The Snowy River Mine is located within the Buller District.

Federation Mining has developed a stakeholder map which identified over 1200 stakeholders within 30 kilometers of the project site, and the stakeholders include the nearby townships of Ikamatua and Reefton. There is a strategy in place to ensure appropriate communication channels are available to stakeholders including:

- Federation Mining website and LinkedIn page
- Monthly Business updates – emailed to stakeholders, posted on community notice boards, mailbox drop to landholders on Snowy River Road and shared online
- Regular community meetings in Reefton
- Monthly update to local media outlets
- Maintenance of a Community information phone line and dedicated email address
- Formal quarterly engagement with Council Executive's and elected officials
- Face to face meetings as required

Community Support

Federation has supported several community organisations during the year to assist their projects and operations including:

- Inangahua A&P Show
- Reefton Search & Rescue
- Reefton Golf Club
- Reefton Rugby
- Reefton Fire Brigade
- Friends of Waiuta
- Reefton Powerhouse Restoration
- Reefton Netball
- Sustainability Conference Organising Committee
- Heritage Pub Light, Reefton
- Trees That Count – Te Rahi O Tane



Heritage Pub Light, Reefton – May 2021



Friends of Waiuta site visit - 2021



Reefton Rugby Club - 2021

Cultural Heritage

Federation has developed a policy framework which is designed to ensure the respect and protection of the cultural heritage associated within areas of operation.

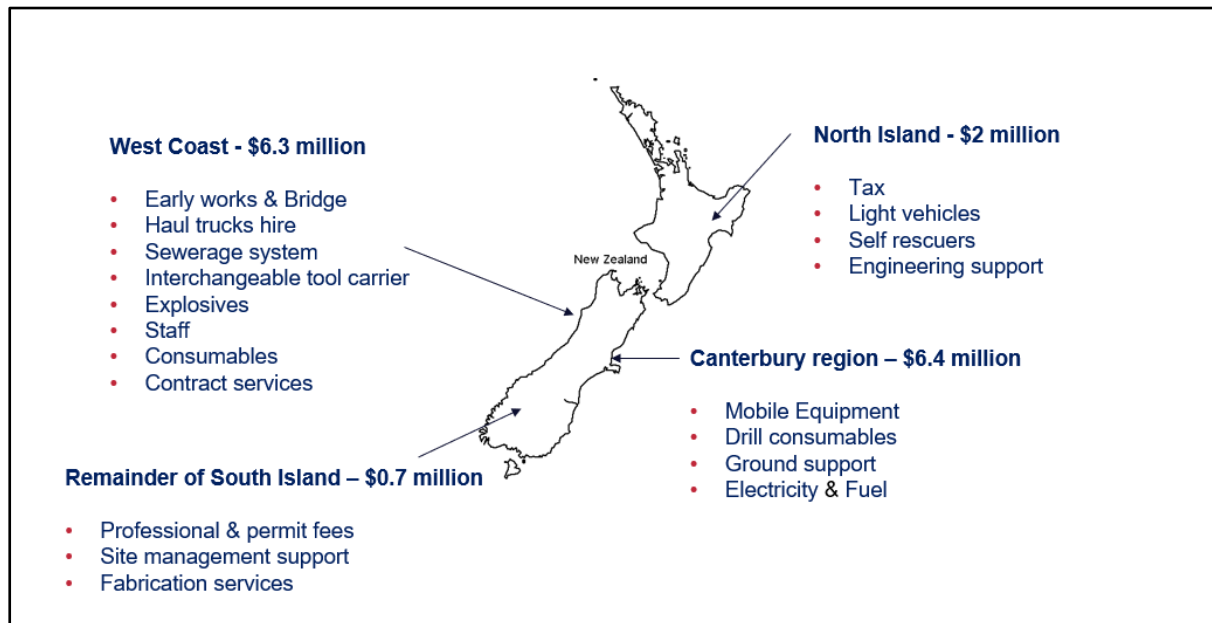
Federation actively and regularly engages with Iwi group Ngai Tahu, and value and respect that relationship and have been exploring options to work together on environmental projects.

Federation provides support to the Friends of Waiuta community group who work with the Department of Conservation to promote and protect the historic Waiuta mining area.

Economic Investment Profile

Federation is a strong contributor to the New Zealand Regional economy with over NZ\$15 million dollars spent across over 200 local NZ businesses and service providers. Federation have spent over NZ\$6.3 million dollars in the West Coast region.

Where possible we prioritise local spend to support the communities and monitor our economic investment with majority of our operational spend on the South Island of New Zealand.



Economic investment profile for financial year 2021

Local Business Case Study



Westpeak™ New Zealand is a family-owned local Greymouth based business which has worked with Federation for over 12 months supplying uniforms, work wear and safety equipment to our Snowy River Mine. Westpeak™ New Zealand employs 20 local people and like Federation also supports the “Trees That Count” project to plant native trees on the West Coast.



First Break Mining is a Christchurch based business which has worked with Federation for the last 12 months assisting with the supply of ground support materials, drilling consumables, logistics and transport, spare parts, and servicing for our Epiroc loaders and drills. First Break has a team of 6 which has also supplied hire mobile equipment to the mine and provided shift coverage for our maintenance team.

Our Environment

Federation recognise that mining is a temporary land use and is committed to high standards of environmental stewardship for the full life cycle of our operation. Federation intends to operate beyond legal compliance to deliver against the obligations of our social license and help to shape industry leading environmental practices.

Federation seeks to minimise our impact on the environment through the use of low emission machines, prioritising the use of renewable energy, recycling, and reusing water, progressive rehabilitation of our operations and returning land to a natural state at the conclusion of mining operations.

The operations will be subjected to regular review, inspection and audit by independent third-party auditors.



Stream Sampling - 2021

Climate Change

We acknowledge that climate related risk has the potential to impact our business and communities we operate within.

Federation will work to identify and actively manage climate change impacts, both in terms of physical and transition risks present in our operations.

Emissions Profile

The Snowy River Mine operation uses grid power provided by New Zealand energy company Meridian which is generated primarily through a hydroelectric method on the South Island.

The primary front line Epiroc M2D Jumbo and ST18 Loader have low emission Tier 4 engines as do the Volvo Interchangeable tool carrier units.

Federation engaged Environmental Accounting Firm Green Base to undertake an independent assessment of the emissions profile for the Snowy River Mine for financial year 20/21.

The emissions profile considered both direct (Scope 1) and indirect (Scope 2) emissions from the Snowy River site, this review did not assess Scope 3 emissions which will be reviewed next financial year.

The direct emission volume relates to the use of diesel, grease, oils and LPGs while the indirect emissions relate to use of electricity (hydro).

- Scope 1 – 418 TCO₂e
- Scope 2 – 16 TCO₂e

Note - TCO₂e = Tonnes of Carbon Dioxide emitted

Federation is currently undertaking an options study on an emissions offsets program to support our emissions reduction strategy to meet our commitment to Net Zero emissions by 2050. The project is expected to have a low emissions intensity given our underground mining method, mobile fleet configuration and use of hydro power. The Company expects the emissions per ounce of gold produced will sit in the lowest industry quartile.

During the year we supported community environmental project “Trees That Count” to plant 100 native trees on the West Coast which will assist to remove 23 tonnes of carbon for the New Zealand environment.

Water

Federation respects and appreciates the importance of the protection of waterways and aquatic life in New Zealand. We acknowledge that water plays an important role in the environment and has cultural and economic significance to many stakeholders.

We installed a rain gauge at the Snowy River site in November 2020 and received 1805 millimeters of rain fall through to 30th of June 2021. The team is able to draw water from the snowy River to assist with dust suppression and operations in accordance with our Resource Consent conditions.

The site has a water management system in place which facilitates the treatment of water used for development drilling operations before release into the site water settling ponds.

Federation have implemented a robust environmental monitoring program which we report on to the West Coast Regional Council.



Snowy River - 2021

Land

The Snowy River Mine operates on a small surface land footprint with a total of 20 hectares disturbed for the surface infrastructure. The land is privately owned, and the use of the land is authorised under a third-party access agreement and our Resource Consent conditions. There is an environmental bond in place with West Coast Regional Council and Buller District Council which was last reviewed in early 2021.

Federation has submitted our annual work and restoration plan to both Councils with which outlines our operational plans and rehabilitation arrangements for the Snowy River site.

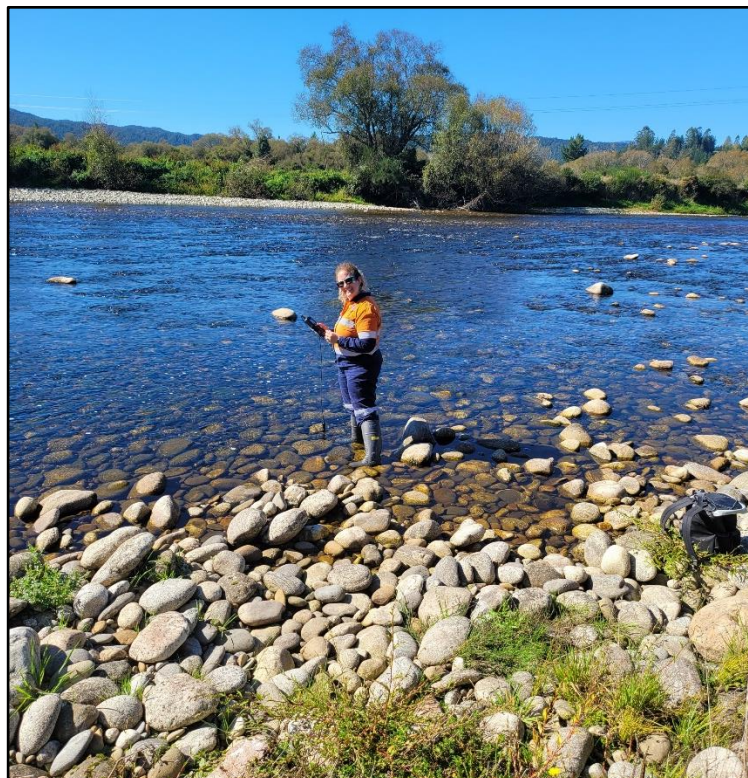
Air

Federation undertakes regular dust, noise and vibration monitoring to ensure the operations are in line with Resource Consent conditions and minimise impacts on our neighbours.

Environmental Monitoring overview

The following is an overview of our environmental monitoring program frequency

- Water Monitoring is conducted weekly with additional testing monthly & quarterly
- Dust Monitoring is conducted monthly
- Aquatic Biology in the Snowy River and Little Grey River is conducted quarterly
- Fish Survey of the Snowy River and Little Grey River is conducted annually during summer
- Subsidence Monitoring (underground) is undertaken quarterly and annually
- Blasting Noise and Vibration is continuously monitored on a neighbouring property
- Operational Noise and Vibration is continuously monitored on a neighbouring property



HSEC Advisor Cas Hutt undertaking Environmental Monitoring - 2021

Our Future

While Federation will seek to add new assets to the portfolio over time, the future of the company will be built upon on our cornerstone asset Snowy River Mine moving into production, and the Company intend to be operating in New Zealand over the long term.

Federation have formed a multi-disciplined project team to scope and prepare the necessary Resource Consent and permitting arrangements to establish a processing plant onsite at Snowy River Mine. A series of environmental and technical investigations were commissioned in late 2021 to assist in the preparing the necessary Resource Consent applications.

Subject to necessary Resource Consents the overview of processing operations include:

- Throughput 300,000 tonnes per year with 95% recovery
- Plant will occupy 10,000 m2 of land already disturbed
- Plant construction time estimated at 9 months at a cost of NZ\$50 million
- Plant commissioning in late 2024
- Over 100 employees during production phase
- Waste to be placed on surface waste rock stack and underground in form of paste fill
- All water runoff from surface waste rock stack to be captured and treated

Federation has been updating stakeholders on progress throughout the year and plans formal Community and stakeholder consultations commencing in late 2021.

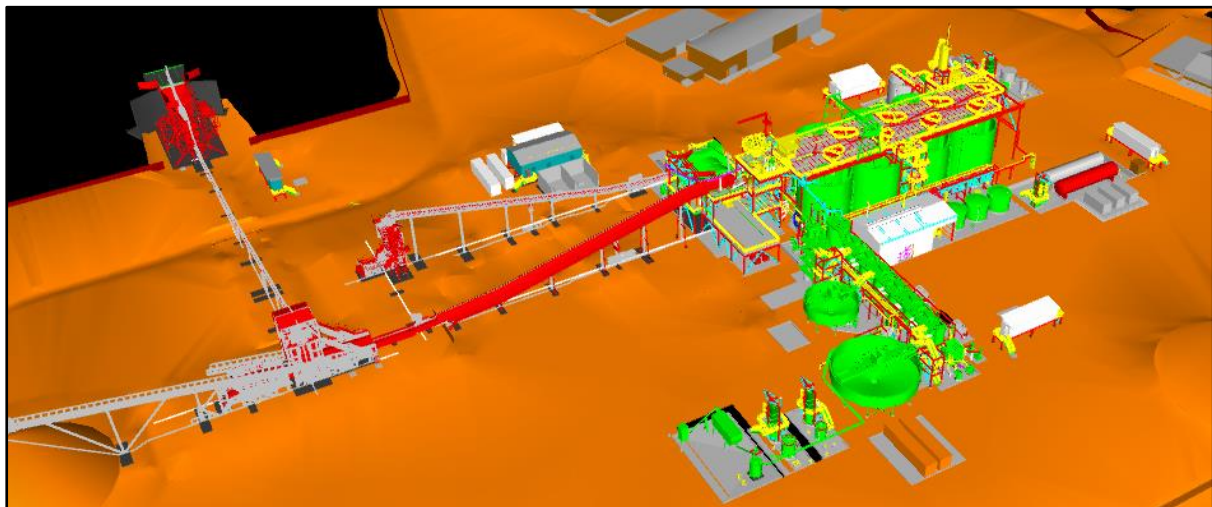


Diagram for illustrative purposes only of a gold processing facility

Contact Us

If you would like to learn more about Federation, have a question or feedback

General Information

Website www.federationmining.com.au

LinkedIn www.linkedin.com/company/federationmining

Contact Federation Mining

Email info@federationmining.com.au

Telephone +61 8330 6785

Community contact line +64 3 732 7028

Key Contacts

Federation Mining

Simon Delander

+61 8330 6785

Media Contact

Michael Vaughan, Fivemark Partners

+61 422 602 720