

Snowy River Project Update

Federation Mining is pleased to provide an update on our progress with the development of the Snowy River Mine (the Project) near Reefton on the South Island in New Zealand.

Our People

This month, we welcomed our new site General Manager, Lincoln Smith. Lincoln will join the team in a part time capacity until September when he will be on site full time. We have also appointed a new Electrician. In July we hired 3 more staff and engaged a specialist to assist our maintenance crews for 4 months.

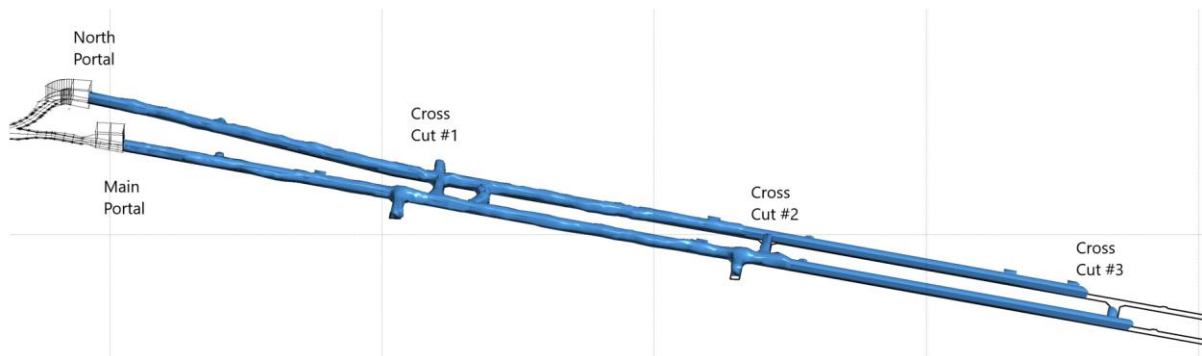
6 employees are commencing training to attain their B Grade Tunnel Manager competency which is being facilitated by New Zealand Mine Rescue with assistance from Development West Coast.

We will be working through additional roles to fill including Supervisor & Tunnel Operator. To apply for these roles, forward your resume to recruitment@federationmining.com.au

Decline Development

We have seen an increase in our development metre rate this month with the crews achieving just short of 300m for the calendar month. Development continued in both declines with the total development now just under 1300m.

We will continue to progress in the next month toward our 4th crosscut between the two declines.



Safety & Training

Over the month of July, the onsite team participated in various safety related exercises and courses including:

- First Aid training to update our team's skills and maintain the qualification.
- Quarterly self-rescuer refresher training with New Zealand Mine Rescue Service
- Training and awareness sessions on our Principal Hazard Management Plans, CIMS emergency response protocols and safety systems.
- Our management team also participated in a desktop emergency management training exercise which was facilitated by an external specialist safety consultant.
- Completion of evacuation drills with all mining crews.

Our team undertake regular workplace inspections and Federation has employee safety and health representatives nominated who play an important role in assisting with workforce consultation on safety and health.

Community & Environment

We held our second community meeting in July with some interested locals coming to hear about the site progress. Our next meeting is planned in September.

We proudly made contributions to local community groups the Reefton Netball Club and Friends of Waiuta to assist in their day-to-day operations. We also contributed to the installation costs of the Heritage Pub Light outside Wilson's Hotel in Reefton.

We commenced scoping a project plan in relation to permitting needs for the future site processing facility and will continue to update the community and our stakeholders as this work progresses.

Environmental monitoring continued this month with all results compliant. During the month we measured 279 millimetres (mm) of rainfall onsite which 164 mm falling over just 3 days.

Infrastructure & Equipment

The following projects were undertaken, and equipment purchased:

- A second Epiroc ST18 loader is on the water bound for New Zealand.
- Mono Pumps and HV Electrical equipment were installed underground in July and Primary Fans will be installed in August.
- Weather cover installed over the high voltage equipment at the portal.
- Installed additional earthing around site buildings following an external electrical review.
- We undertook some road maintenance across our surface roads.

Federation Mining maintains a Community Contact & Complaints Line +64 3 732 7028.

Contact Federation Mining

Website www.federationmining.com.au

Email info@federationmining.com.au

LinkedIn www.linkedin.com/company/federationmining

For more information, please contact:

Federation Mining

Simon Delander
+61 8330 6785

Media Contact

Michael Vaughan, Fivemark Partners
+61 422 602 720

About Federation Mining

Federation Mining is an Australian incorporated company established by Mark Le Messurier and Jim Askew to build a new gold mining company. Federation will pursue opportunities where it is able to apply its expertise and experience in the development and management of mining projects across a range of regions with a strong focus on Sustainability.

Site Photos



Second Epiroc ST18 Loader on board a ship bound for New Zealand



Aerial Photo of the Snowy River Mine Site